

DAILY FIXED INCOME & UNIT TRUST



First Capital
A Janashakti Group Company



August 4, 2023

"The secondary market yields remain still"

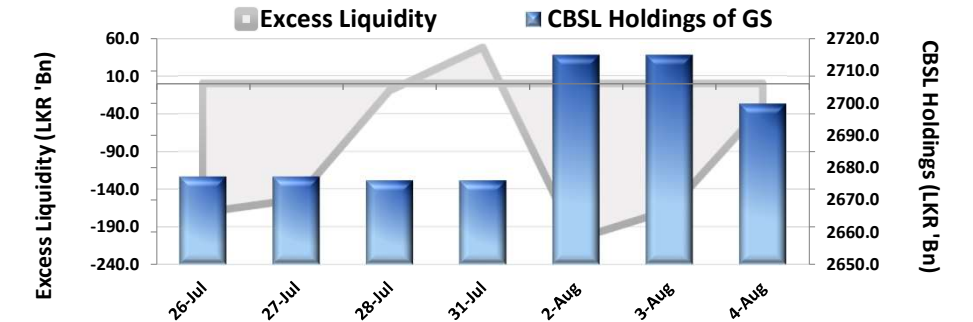
The secondary market yield curve remained broadly stable during the day as it concluded the week. Meanwhile, mid tenor maturities namely 15.09.27 and 15.01.28 traded at 14.35% and 13.75%, respectively whilst, 15.05.30 maturity traded at 13.25% and 01.07.32 tenor traded at 13.15%. Moreover, in the forex market LKR further depreciated against the green back recording LKR 318.4.

UNIT TRUSTS

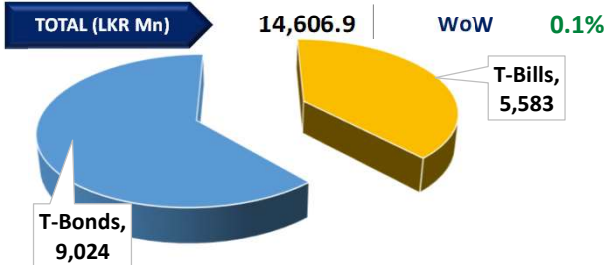
03-Aug-23

First Capital Unit Trust Funds		Sell Price	Buy Price	Avg. Yield
		LKR	LKR	As at May-23
First Capital Money Market Fund	FCMMF	2,704.57	2,704.57	26.4%
First Capital Gilt Edge Fund	FCGEF	2,117.61	2,117.61	24.2%
First Capital Wealth Fund	FCWF	1,489.37	1,489.33	38.0%
First Capital Equity Fund	FCEF	2,448.67	2,326.24	

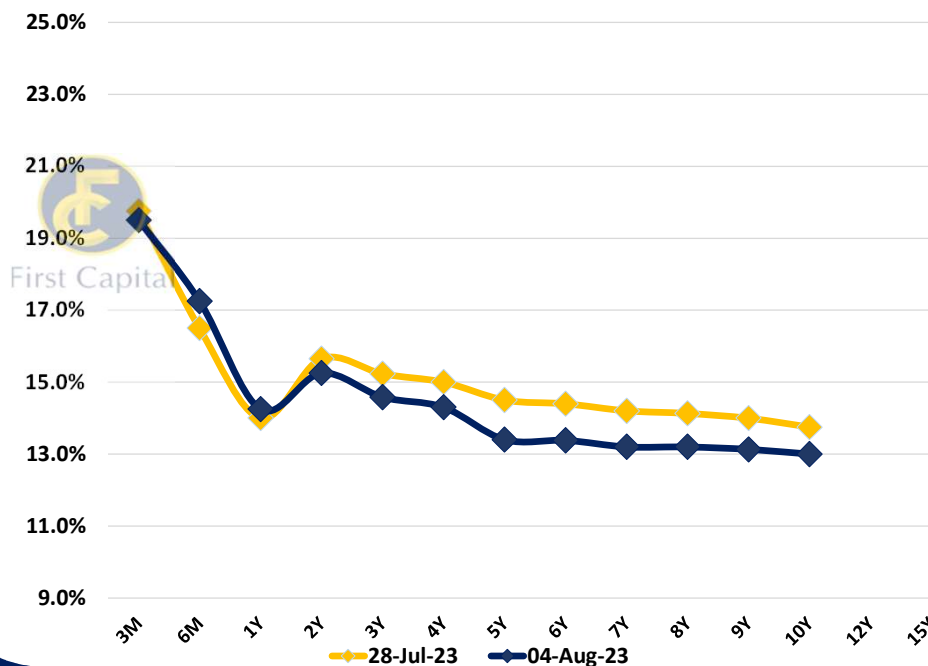
EXCESS LIQUIDITY AND CBSL HOLDINGS



OUTSTANDING STOCK [GSEC]

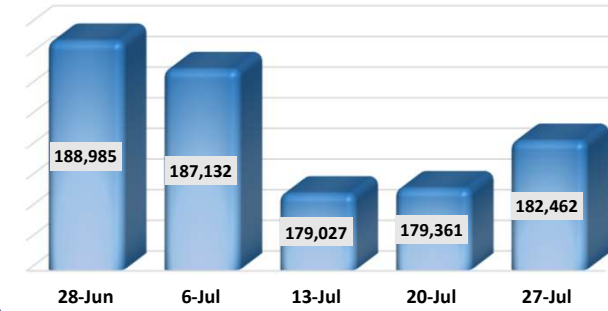


BILLS AND BONDS YIELDS

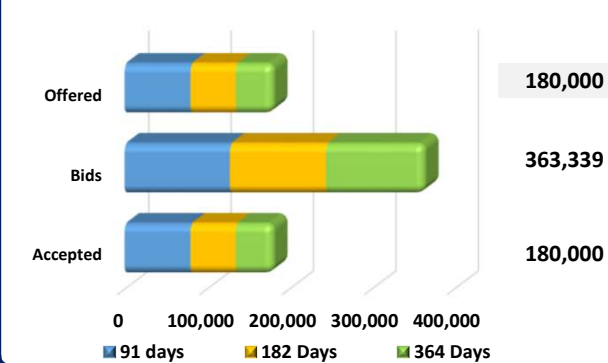


Tenure	Bid	Offer	Today	Last Week	Change (bps)
< 91 Days < 3M	20.00%	19.00%	19.50%	19.75%	-25
< 182 Days < 6M	17.50%	17.00%	17.25%	16.50%	+75
< 364 Days < 1Y	14.50%	14.00%	14.25%	14.00%	+25
07-Jan-25 < 2Y	15.50%	15.00%	15.25%	15.65%	-40
15-May-26 < 3Y	14.65%	14.50%	14.58%	15.23%	-65
15-Sep-27 < 4Y	14.35%	14.25%	14.30%	15.00%	-70
01-May-28 < 5Y	13.50%	13.30%	13.40%	14.50%	-110
15-Jul-29 < 6Y	13.50%	13.25%	13.38%	14.40%	-102
15-May-30 < 7Y	13.30%	13.10%	13.20%	14.20%	-100
15-May-31 < 8Y	13.30%	13.10%	13.20%	14.13%	-93
01-Jul-32 < 9Y	13.25%	13.00%	13.13%	14.00%	-87
15-Jan-33 < 10Y	13.25%	12.75%	13.00%	13.75%	-75
15-Mar-35 < 12Y	N/A	N/A	N/A	N/A	N/A
15-Aug-39 < 15Y	N/A	N/A	N/A	N/A	N/A
01-Jan-41 < 20Y	N/A	N/A	N/A	N/A	N/A

FOREIGN HOLDING (LKR MN) | WoW 1.7%



T-BILL AUCTION (LKR MN)



Auction Date: 02-Aug-23

Settlement Date: 04-Aug-23

Tenure	Yield	Change (bps)
91 days	19.90%	-6 bps
184 days	17.57%	-12 bps
364 days	14.16%	-13 bps

T-BOND AUCTION (LKR MN)



MATURITY TABLE (LKR MN)

