


First Capital
A Janashakthi Group Company

DAILY FIXED INCOME & UNIT TRUST







January 18, 2024

"Buying spree across the board"

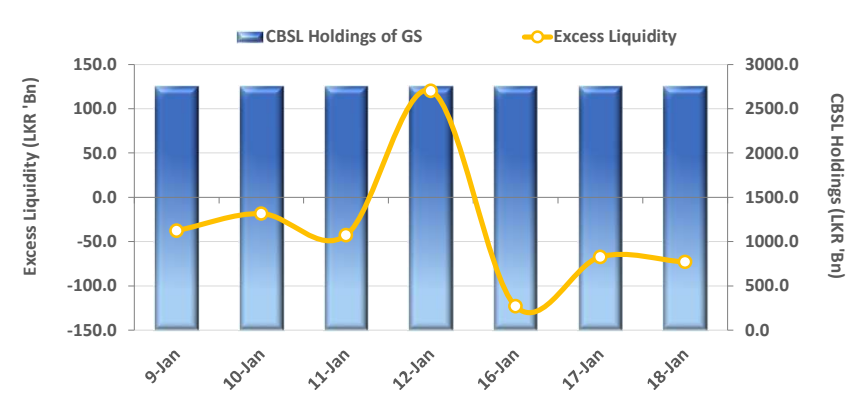
The secondary market displayed buying sentiment across the board generating moderate volumes during the day. Amongst the traded maturities, 2025 tenors including 15.01.25, 01.06.25, 01.07.25 and 01.08.25 traded in the range of 13.50%-13.05% whilst on the short end of the curve, 01.02.26 and 01.06.26 hovered in the range of 13.70%-13.63%. Moreover, on the mid end, 2028, 2029 and 2030 maturities enticed bullish sentiment with 15.03.28, 01.07.28 traded within 14.15%-14.05% whilst 15.07.29 and 15.05.30 changed hands between the range of 14.25%-14.10%. Meanwhile in the forex market, LKR continued to appreciate against USD and stood at LKR 321.2 during the day.

UNIT TRUSTS

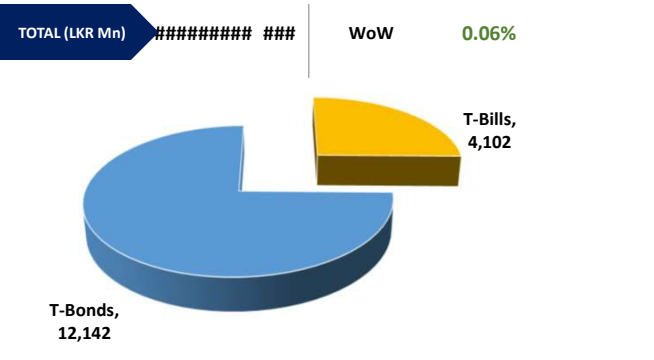
17-Jan-24

| First Capital Unit Trust Funds | | | Sell Price | Buy Price | Avg. Yield |
|---------------------------------|-------|---|------------|-----------|------------|
| | | | LKR | LKR | |
| First Capital Money Market Fund | FCMMF |  | 2,945.50 | 2,945.50 | 16.12% |
| First Capital Gilt Edge Fund | FCGEF |  | 2,272.25 | 2,272.25 | 11.75% |
| First Capital Wealth Fund | FCWF |  | 1,622.58 | 1,622.54 | 60.28% |
| First Capital Equity Fund | FCCEF |  | 2,231.79 | 2,120.20 | 32.29% |

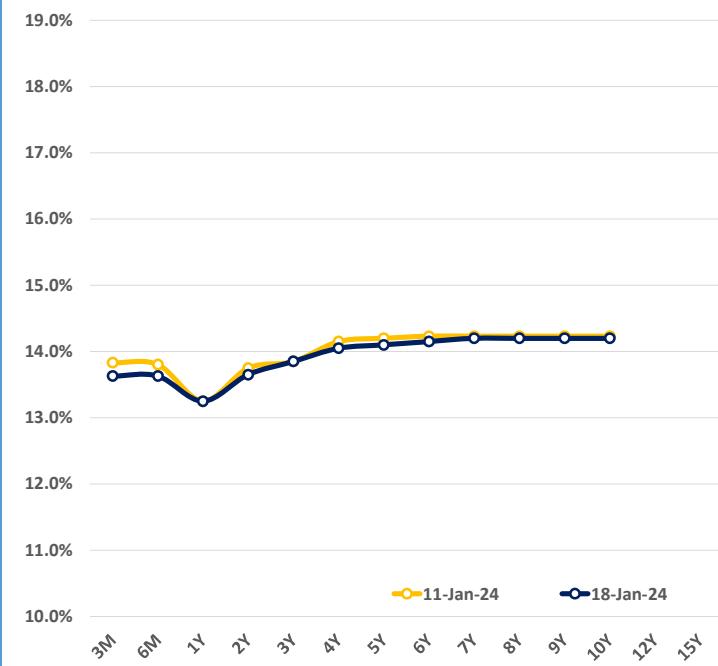
EXCESS LIQUIDITY AND CBSL HOLDINGS



OUTSTANDING STOCK [GSEC]

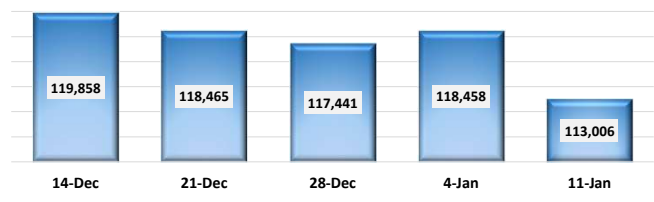


BILLS AND BONDS YIELDS

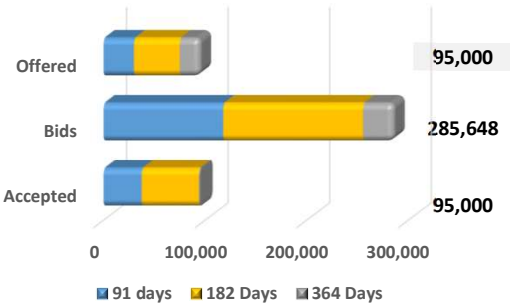


| Tenure | Bid | Offer | Today | Last Week | Change (bps) |
|-----------------|--------|--------|--------|-----------|--------------|
| < 91 Days < 3M | 13.75% | 13.50% | 13.63% | 13.83% | -20 |
| < 182 Days < 6M | 13.75% | 13.50% | 13.63% | 13.80% | -17 |
| < 364 Days < 1Y | 13.50% | 13.00% | 13.25% | 13.25% | 0 |
| 01-Feb-26 < 2Y | 13.70% | 13.60% | 13.65% | 13.75% | -10 |
| 15-Jan-27 < 3Y | 13.90% | 13.80% | 13.85% | 13.85% | 0 |
| 15-Mar-28 < 4Y | 14.10% | 14.00% | 14.05% | 14.15% | -10 |
| 01-Jan-29 < 5Y | 14.15% | 14.05% | 14.10% | 14.20% | -10 |
| 15-May-30 < 6Y | 14.20% | 14.10% | 14.15% | 14.23% | -8 |
| 15-Jan-31 < 7Y | 14.25% | 14.15% | 14.20% | 14.23% | -3 |
| 01-Jan-32 < 8Y | 14.25% | 14.15% | 14.20% | 14.23% | -3 |
| 15-Jan-33 < 9Y | 14.25% | 14.15% | 14.20% | 14.23% | -3 |
| 01-Jan-34 < 10Y | 14.25% | 14.15% | 14.20% | 14.23% | -3 |
| 15-Mar-35 < 12Y | N/A | N/A | N/A | N/A | N/A |
| 15-Aug-39 < 15Y | N/A | N/A | N/A | N/A | N/A |
| 01-Jan-41 < 20Y | N/A | N/A | N/A | N/A | N/A |

FOREIGN HOLDING (LKR MN) WoW -4.60%



T-BILL AUCTION (LKR MN)



Auction Date: 17-Jan-24

Settlement Date: 19-Jan-24

| | | | |
|----------|--------|---|---------|
| 91 days | 13.91% | ▼ | -36 bps |
| 184 days | 13.83% | ▼ | -26 bps |
| 364 days | 12.92% | ▼ | -1 bps |

T-BOND AUCTION (LKR MN)

Auction Date: 11-Jan-24

W.Avg 13.83% W.Avg 14.21% W.Avg 14.22%



MATURITY TABLE (LKR MN)

Week ending: 26-Jan-24

