



January 22, 2024

*"Market pauses following last week's bullish momentum"*

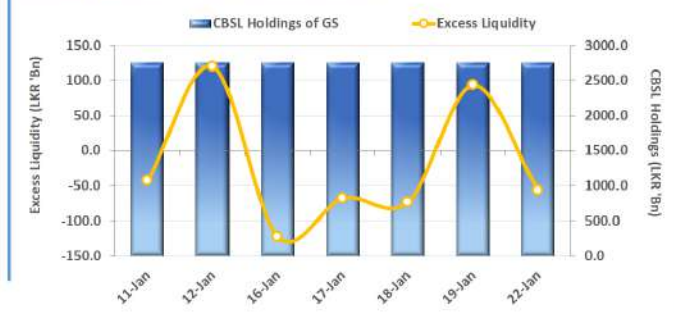
The secondary market yield curve remained broadly unchanged as the market took a breather from last week's bullish sentiment. However, in the midst of limited activities and ultra-thin volumes, 2026 tenor observed a slight buying appetite with 01.02.2026 and 01.06.2026 maturities hovering in the range of 13.60%-13.55%. Meanwhile, CBSL expects to raise LKR 130.0Bn from the weekly T-Bill auction scheduled on 23rd Jan-24. Meanwhile, on the external side LKR marginally appreciated against the USD as it closed for the day at LKR 320.5.

UNIT TRUSTS

21-Jan-24

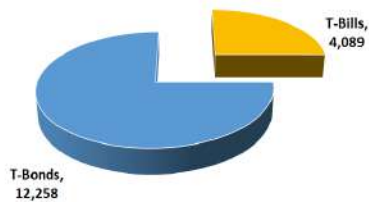
First Capital Unit Trust Funds			Sell Price	Buy Price	Avg. Yield
			LKR	LKR	
First Capital Money Market Fund	FCMMF		2,950.72	2,950.72	16.17%
First Capital Gilt Edge Fund	FCGEF		2,275.28	2,275.28	10.86%
First Capital Wealth Fund	FCWF		1,627.79	1,627.75	60.05%
First Capital Equity Fund	FCCEF		2,223.20	2,112.04	31.25%

EXCESS LIQUIDITY AND CBSL HOLDINGS



OUTSTANDING STOCK [GSEC]

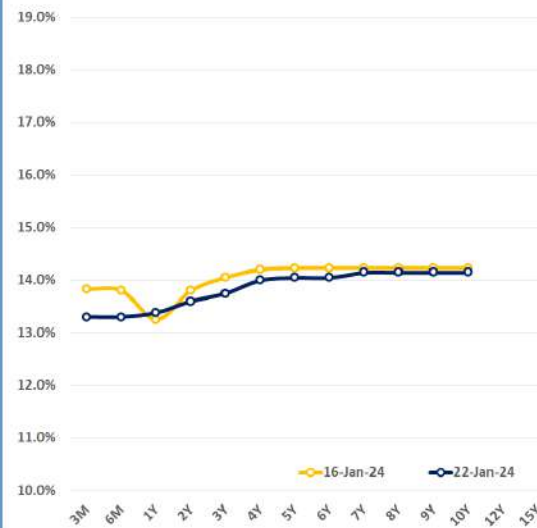
TOTAL (LKR Mn) 16,347.04 WoW 0.63%



FOREIGN HOLDING (LKR MN) WoW -3.60%

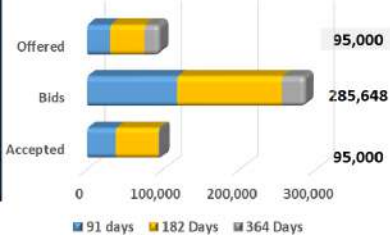


BILLS AND BONDS YIELDS



Tenure	Bid	Offer	Today	Last Week	Change (bps)
< 91 Days < 3M	13.40%	13.20%	13.30%	13.83%	-53
< 182 Days < 6M	13.40%	13.20%	13.30%	13.80%	-50
< 364 Days < 1Y	13.50%	13.25%	13.38%	13.25%	+13
01-Feb-26 < 2Y	13.65%	13.55%	13.60%	13.80%	-20
15-Jan-27 < 3Y	13.80%	13.70%	13.75%	14.05%	-30
15-Mar-28 < 4Y	14.05%	13.95%	14.00%	14.20%	-20
01-Jan-29 < 5Y	14.10%	14.00%	14.05%	14.23%	-18
15-May-30 < 6Y	14.10%	14.00%	14.05%	14.23%	-18
15-Jan-31 < 7Y	14.20%	14.10%	14.15%	14.23%	-8
01-Jan-32 < 8Y	14.20%	14.10%	14.15%	14.23%	-8
15-Jan-33 < 9Y	14.20%	14.10%	14.15%	14.23%	-8
01-Jan-34 < 10Y	14.20%	14.10%	14.15%	14.23%	-8
15-Mar-35 < 12Y	N/A	N/A	N/A	N/A	N/A
15-Aug-39 < 15Y	N/A	N/A	N/A	N/A	N/A
01-Jan-41 < 20Y	N/A	N/A	N/A	N/A	N/A

T-BILL AUCTION (LKR MN)



Auction Date: 17-Jan-24  
Settlement Date: 19-Jan-24

91 days	13.91%	▼	-36 bps
184 days	13.83%	▼	-26 bps
364 days	12.92%	▼	-1 bps

T-BOND AUCTION (LKR MN)



MATURITY TABLE (LKR MN)

