



First Capital
A Janashakthi Group Company

DAILY FIXED INCOME & UNIT TRUST







February 2, 2024

“Yields further descend amidst the upswing in buying sentiment”

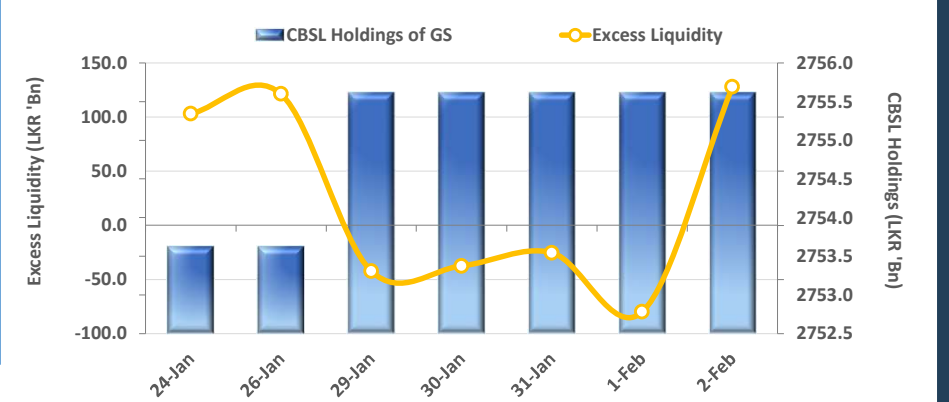
The secondary market yield curve continued to edge down predominantly on the short to long tenor driven by an active buying sentiment and a noticeable influx of foreign interest witnessed across the board with moderate trading volumes. On the short end of the curve, 2026 maturities, including 01.02.26, 01.06.26 and 01.08.26 traded in the range of 12.35%-12.10%, while 01.05.27 traded at 12.70%. Meanwhile, on the mid end, 2028 maturities including 15.03.28 and 01.07.28 changed hands in between 13.10%-12.90% while 15.05.30 traded in the range of 13.40%-13.30% and 01.07.32 closed the week at 13.45%. Meanwhile in the forex market, LKR continued to appreciate against USD and stood at LKR 314.0 during the day whilst WoW appreciated 1.0%.

UNIT TRUSTS

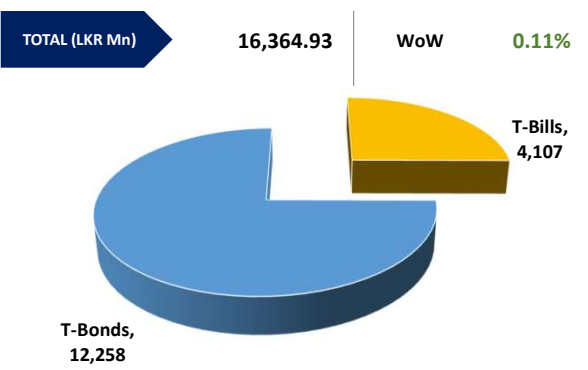
01-Feb-24

First Capital Unit Trust Funds			Sell Price	Buy Price	Avg. Yield
			LKR	LKR	
First Capital Money Market Fund	FCMMF		2,964.83	2,964.83	15.72%
First Capital Gilt Edge Fund	FCGEF		2,284.67	2,284.67	11.23%
First Capital Wealth Fund	FCWF		1,661.54	1,661.50	61.56%
First Capital Equity Fund	FCCEF		2,213.20	2,102.54	29.46%

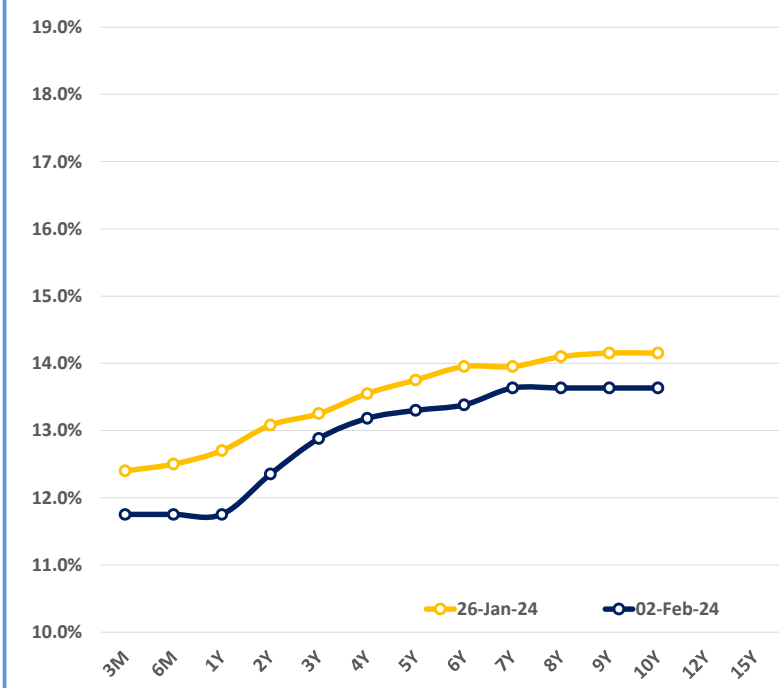
EXCESS LIQUIDITY AND CBSL HOLDINGS



OUTSTANDING STOCK [GSEC]

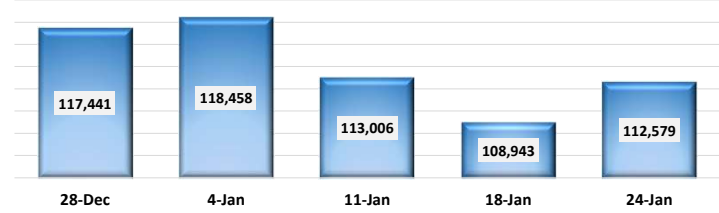


BILLS AND BONDS YIELDS

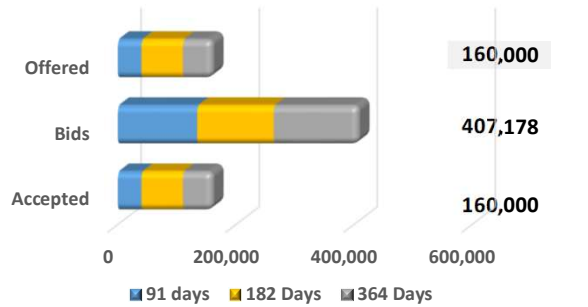


Tenure	Bid	Offer	Today	Last Week	Change (bps)
< 91 Days < 3M	12.00%	11.50%	11.75%	12.40%	-65
< 182 Days < 6M	12.00%	11.50%	11.75%	12.50%	-75
< 364 Days < 1Y	12.00%	11.50%	11.75%	12.70%	-95
01-Feb-26 < 2Y	12.20%	12.00%	12.35%	13.08%	-73
01-May-27 < 3Y	12.75%	12.60%	12.88%	13.25%	-37
15-Mar-28 < 4Y	13.00%	12.90%	13.18%	13.55%	-37
01-Jan-29 < 5Y	13.15%	13.00%	13.30%	13.75%	-45
15-May-30 < 6Y	13.30%	13.15%	13.38%	13.95%	-57
15-Jan-31 < 7Y	13.45%	13.25%	13.63%	13.95%	-32
01-Jan-32 < 8Y	13.45%	13.25%	13.63%	14.10%	-47
15-Jan-33 < 9Y	13.45%	13.25%	13.63%	14.15%	-52
01-Jan-34 < 10Y	13.45%	13.25%	13.63%	14.15%	-52
15-Mar-35 < 12Y	N/A	N/A	N/A	N/A	N/A
15-Aug-39 < 15Y	N/A	N/A	N/A	N/A	N/A
01-Jan-41 < 20Y	N/A	N/A	N/A	N/A	N/A

FOREIGN HOLDING (LKR MN)



T-BILL AUCTION (LKR MN)



Auction Date: 31-Jan-24

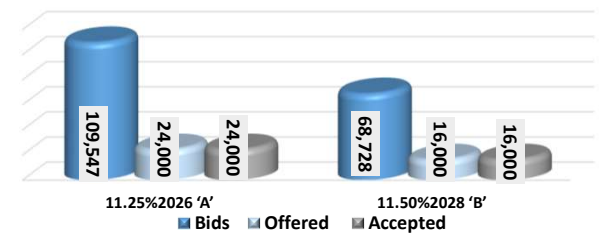
Settlement Date: 2-Feb-24

91 days	11.97%	▼ -138 bps
184 days	12.20%	▼ -121 bps
364 days	12.00%	▼ -78 bps

T-BOND AUCTION (LKR MN)

Auction Date: 30-Jan-24

W.Avg 13.08% W.Avg 13.65%



MATURITY TABLE (LKR MN)

Week ending: 9-Feb-24

