



January 23, 2024

**"Auction yields descend across maturities"**

The primary markets yields edged down across maturities at the bill auction held today, while the overall market activities enticed renewed interest post auction. Accordingly, the total offered T-Bill amount of LKR 130.0Bn was fully accepted with yields of 03M, 06M and 1 Year T-Bills further declining to 13.35% (-56bps), 13.41% (-42bps) and 12.78% (-14bps), respectively. In the secondary market post-auction, there was heightened interest in 03M and 06M T-Bills, with bids reaching up to 12.75% and 13.00%, respectively. Similarly, secondary market bonds attracted increased investor participation throughout the day and post-auction, with moderate volumes. Among the traded maturities, on the short end of the curve, 2026 and 2027 maturities, including 01.02.26, 01.06.26, and 01.08.26, traded in the range of 13.70%-13.35%, while 01.05.27 and 15.09.27 traded in the range of 13.90%-13.70%. On the mid-end, buying interest was noted on 15.03.28, which traded in the range of 14.00%-13.85%.

**UNIT TRUSTS**

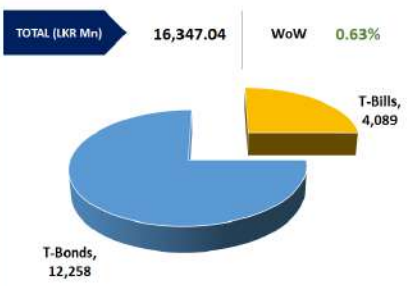
22-Jan-24

First Capital Unit Trust Funds			Sell Price	Buy Price	Avg. Yield
			LKR	LKR	
First Capital Money Market Fund	FCMMF		2,952.02	2,952.02	16.16%
First Capital Gilt Edge Fund	FCGEF		2,276.09	2,276.09	11.11%
First Capital Wealth Fund	FCWF		1,628.80	1,628.76	59.96%
First Capital Equity Fund	FCCEF		2,208.71	2,098.27	30.14%

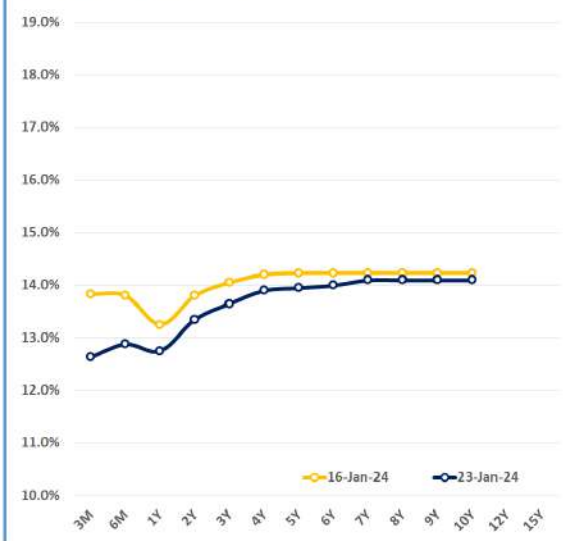
**EXCESS LIQUIDITY AND CBSL HOLDINGS**



**OUTSTANDING STOCK [GSEC]**



**BILLS AND BONDS YIELDS**

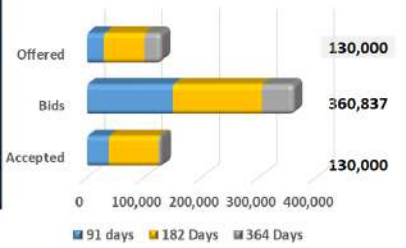


Tenure	Bid	Offer	Today	Last Week	Change (bps)
< 91 Days < 3M	12.75%	12.50%	12.63%	13.83%	-120
< 182 Days < 6M	13.00%	12.75%	12.88%	13.80%	-92
< 364 Days < 1Y	13.00%	12.50%	12.75%	13.25%	-50
01-Feb-26 < 2Y	13.40%	13.30%	13.35%	13.80%	-45
15-Jan-27 < 3Y	13.70%	13.60%	13.65%	14.05%	-40
15-Mar-28 < 4Y	13.95%	13.85%	13.90%	14.20%	-30
01-Jan-29 < 5Y	14.00%	13.90%	13.95%	14.23%	-28
15-May-30 < 6Y	14.05%	13.95%	14.00%	14.23%	-23
15-Jan-31 < 7Y	14.15%	14.05%	14.10%	14.23%	-13
01-Jan-32 < 8Y	14.15%	14.05%	14.10%	14.23%	-13
15-Jan-33 < 9Y	14.15%	14.05%	14.10%	14.23%	-13
01-Jan-34 < 10Y	14.15%	14.05%	14.10%	14.23%	-13
15-Mar-35 < 12Y	N/A	N/A	N/A	N/A	N/A
15-Aug-39 < 15Y	N/A	N/A	N/A	N/A	N/A
01-Jan-41 < 20Y	N/A	N/A	N/A	N/A	N/A

**FOREIGN HOLDING (LKR MN) | WoW -3.60%**



**T-BILL AUCTION (LKR MN)**



**Auction Date: 23-Jan-24**

Settlement Date: 26-Jan-24

91 days	13.35%	▼	-56 bps
184 days	13.41%	▼	-42 bps
364 days	12.78%	▼	-14 bps

**T-BOND AUCTION (LKR MN)**

Auction Date: 11-Jan-24

W.Avg 13.83% | W.Avg 14.21% | W.Avg 14.22%



**MATURITY TABLE (LKR MN)**

