







First Capital
A Jansinhalho Group Company

DAILY FIXED INCOME & UNIT TRUST



UNIT TRUSTS

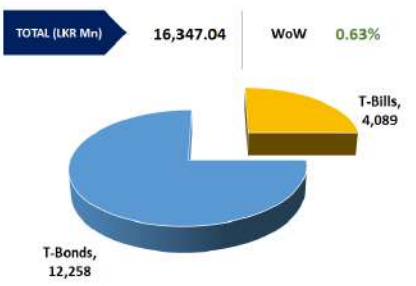
25-Jan-24

First Capital Unit Trust Funds			Sell Price	Buy Price	Avg. Yield
			LKR	LKR	
First Capital Money Market Fund	FCMMF		2,955.92	2,955.92	16.14%
First Capital Gilt Edge Fund	FCGEF		2,279.76	2,279.76	15.88%
First Capital Wealth Fund	FCWF		1,635.89	1,635.85	60.15%
First Capital Equity Fund	FCCEF		2,187.70	2,078.32	28.40%

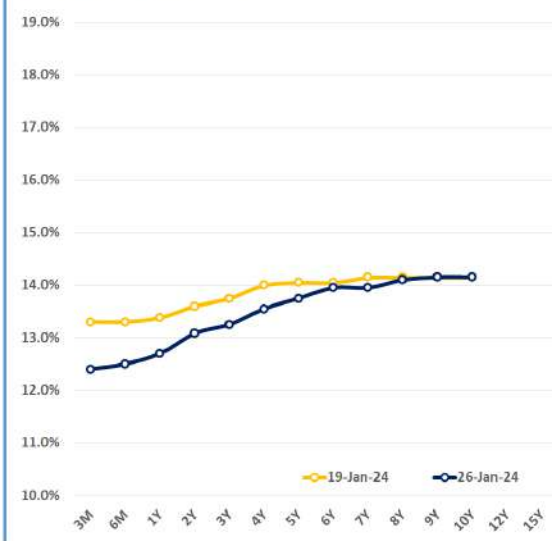
EXCESS LIQUIDITY AND CBSL HOLDINGS



OUTSTANDING STOCK [GSEC]



BILLS AND BONDS YIELDS



Tenure	Bid	Offer	Today	Last Week	Change (bps)
< 91 Days < 3M	12.50%	12.30%	12.40%	13.30%	-90
< 182 Days < 6M	12.60%	12.40%	12.50%	13.30%	-80
< 364 Days < 1Y	12.80%	12.60%	12.70%	13.38%	-68
01-Feb-26 < 2Y	13.15%	13.00%	13.08%	13.60%	-52
01-May-27 < 3Y	13.30%	13.20%	13.25%	13.75%	-50
15-Mar-28 < 4Y	13.60%	13.50%	13.55%	14.00%	-45
01-Jan-29 < 5Y	13.80%	13.70%	13.75%	14.05%	-30
15-May-30 < 6Y	14.00%	13.90%	13.95%	14.05%	-10
15-Jan-31 < 7Y	14.00%	13.90%	13.95%	14.15%	-20
01-Jan-32 < 8Y	14.20%	14.00%	14.10%	14.15%	-5
15-Jan-33 < 9Y	14.30%	14.00%	14.15%	14.15%	0
01-Jan-34 < 10Y	14.30%	14.00%	14.15%	14.15%	0
15-Mar-35 < 12Y	N/A	N/A	N/A	N/A	N/A
15-Aug-39 < 15Y	N/A	N/A	N/A	N/A	N/A
01-Jan-41 < 20Y	N/A	N/A	N/A	N/A	N/A

January 26, 2024

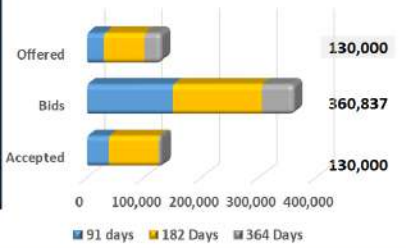
"2027 tenor gets rejected at the buy back auction"

CBSL held a treasury buy back auction today, the 26th of Jan-24 where 01.06.26 tenor was accepted at 13.20% whilst 01.05.27 maturity was rejected. Meanwhile the secondary market displayed activities mainly centered among short and mid tenors. Moreover, 2026 maturities traded at 13.25% whilst, 01.05.27 tenor traded at 13.70% whilst, 15.05.30 tenor traded at 13.95%. On the external front LKR remained stagnant against the green back recording at LKR 319.1 during the day.

FOREIGN HOLDING (LKR MN) | WoW **-3.60%**



T-BILL AUCTION (LKR MN)



Auction Date: 23-Jan-24
Settlement Date: 26-Jan-24

91 days	13.35%	▼	-56 bps
184 days	13.41%	▼	-42 bps
364 days	12.78%	▼	-14 bps

T-BOND AUCTION (LKR MN) | Auction Date: 30-Jan-24



MATURITY TABLE (LKR MN)

