



First Capital
A Jansinathi Group Company

DAILY FIXED INCOME & UNIT TRUST



March 1, 2024

"The secondary market continues its dull stance"

The secondary market yield curve remained broadly unchanged during the day continuing the sluggish movement from the previous session. The investors further continued to adapt into a cautious stance displaying very limited activity followed by low volumes. However, short and mid end maturities enticed trades during the day as 15.09.27 tenor traded at 11.95%, 15.03.28 tenor traded at 12.20% and 01.07.28 maturity traded at 12.22%. On the external side LKR slightly appreciated against the green back recording at LKR 309.9. Moreover, overnight liquidity turned positive after 4 consecutive sessions whilst CBSL holdings of government securities remained stagnant at LKR 2715.6Bn. On the external sector performance review for the month of January 2024, the trade deficit recorded an expansion to USD 541.0Mn cf. USD 445.0Mn mainly due to higher import expenditure. Meanwhile Worker remittances too displayed an improvement registering at USD 488.0Mn whilst tourism earnings registered at USD 342.0Mn witnessing a substantial increase of 122.7%YoY compared to the previous year.

UNIT TRUSTS

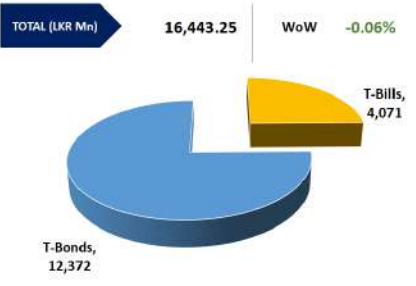
First Capital Unit Trust Funds		Sell Price	Buy Price	Avg. Yield
		LKR	LKR	
First Capital Money Market Fund	FCMMF	2,999.09	2,999.09	14.82%
First Capital Gilt Edge Fund	FCGEF	2,302.61	2,302.61	9.96%
First Capital Wealth Fund	FCWF	1,808.73	1,808.68	72.58%
First Capital Equity Fund	FCCEF	2,278.38	2,164.46	N/A

29-Feb-24

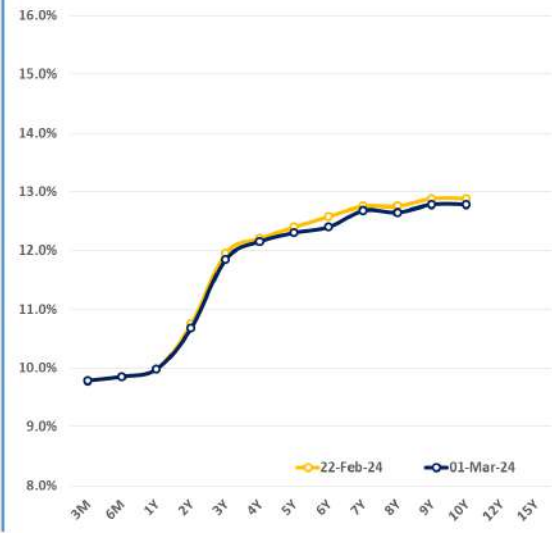
EXCESS LIQUIDITY AND CBSL HOLDINGS



OUTSTANDING STOCK [GSEC]

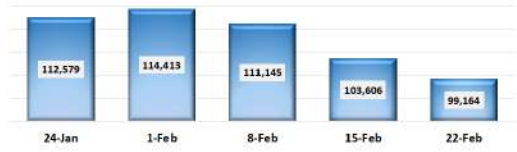


BILLS AND BONDS YIELDS

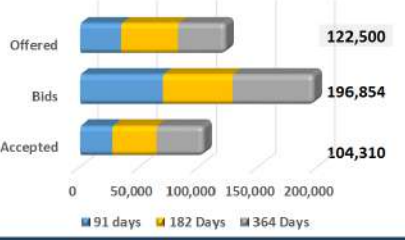


Tenure	Bid	Offer	Today	Last Week	Change (bps)
< 91 Days < 3M	9.85%	9.70%	9.78%	9.78%	0
< 182 Days < 6M	9.95%	9.75%	9.85%	9.85%	0
< 364 Days < 1Y	10.05%	9.90%	9.98%	9.98%	0
01-Feb-26 < 2Y	10.75%	10.60%	10.68%	10.75%	-7
01-May-27 < 3Y	11.90%	11.80%	11.85%	11.95%	-10
15-Mar-28 < 4Y	12.20%	12.10%	12.15%	12.20%	-5
15-Jul-29 < 5Y	12.35%	12.25%	12.30%	12.40%	-10
15-May-30 < 6Y	12.50%	12.30%	12.40%	12.58%	-18
15-May-31 < 7Y	12.75%	12.60%	12.68%	12.75%	-7
01-Jul-32 < 8Y	12.90%	12.40%	12.65%	12.75%	-10
15-Jan-33 < 9Y	12.90%	12.65%	12.78%	12.88%	-10
01-Jan-34 < 10Y	12.90%	12.65%	12.78%	12.88%	-10
15-Mar-35 < 12Y	N/A	N/A	N/A	N/A	N/A
15-Aug-39 < 15Y	N/A	N/A	N/A	N/A	N/A
01-Jan-41 < 20Y	N/A	N/A	N/A	N/A	N/A

FOREIGN HOLDING (LKR MN)



T-BILL AUCTION (LKR MN)



Auction Date: 28-Feb-24

Tenure	Yield	Change
91 days	9.87%	+9 bps
184 days	9.95%	+9 bps
364 days	10.05%	+3 bps

T-BOND AUCTION (LKR MN)



MATURITY TABLE (LKR MN)

