



**First Capital**  
A Janashakthi Group Company

# DAILY FIXED INCOME & UNIT TRUST







**March 13, 2024**

**"Auction yields continue to sail northward"**

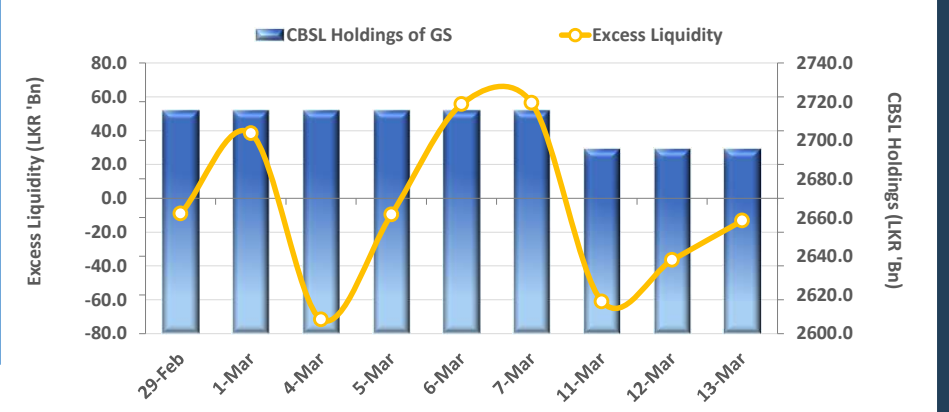
The secondary market witnessed a day marked by subdued sentiment, attributed to limited activities and thin trading volumes. Notably, short to mid tenors including 15.12.26, 01.05.27, and 15.12.28 enticed trades at 11.29%, 11.90%, and 12.18%, respectively. Meanwhile, at the weekly T-bill auction held today, CBSL partially accepted LKR 167.3Bn from the total offered of LKR 180.0Bn, whilst auction yields slightly increased by over 10bps across the board. The 91-day maturity experienced higher reception, with CBSL accepting LKR 51.6Bn (surpassing the total offered of LKR 50.0Bn) at a weighted average yield rate (WAYR) of 10.10% (+14bps), whilst LKR 75.0Bn was fully accepted for the 182-day maturity at a WAYR of 10.21% (+13bps), and LKR 40.7Bn was accepted for the 364-day maturity (below the total offered of LKR 55.0Bn) at a WAYR of 10.24% (+10bps). Furthermore, overnight liquidity continued to remain negative for the 3<sup>rd</sup> consecutive day, recording a deficit of LKR 13.2Bn, whilst CBSL holdings remained stagnant at LKR 2,695.62Bn. On the external side, the LKR continued to appreciate against the USD for the 4<sup>th</sup> consecutive week, closing at LKR 306.6 during the day.

**UNIT TRUSTS**

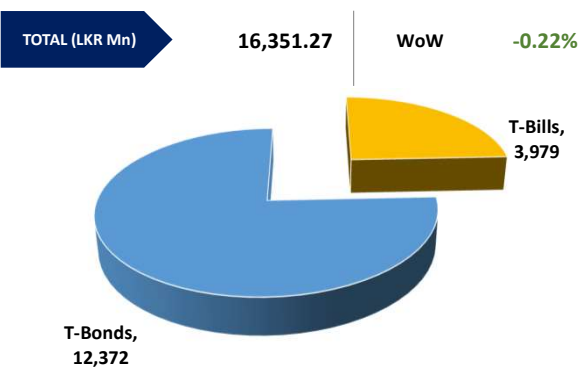
12-Mar-24

First Capital Unit Trust Funds			Sell Price	Buy Price	Avg. Yield
			LKR	LKR	
First Capital Money Market Fund	FCMMF		3,013.37	3,013.37	14.56%
First Capital Gilt Edge Fund	FCGEF		2,307.51	2,307.51	7.35%
First Capital Wealth Fund	FCWF		1,813.66	1,813.61	62.03%
First Capital Equity Fund	FCCEF		2,344.51	2,227.28	N/A

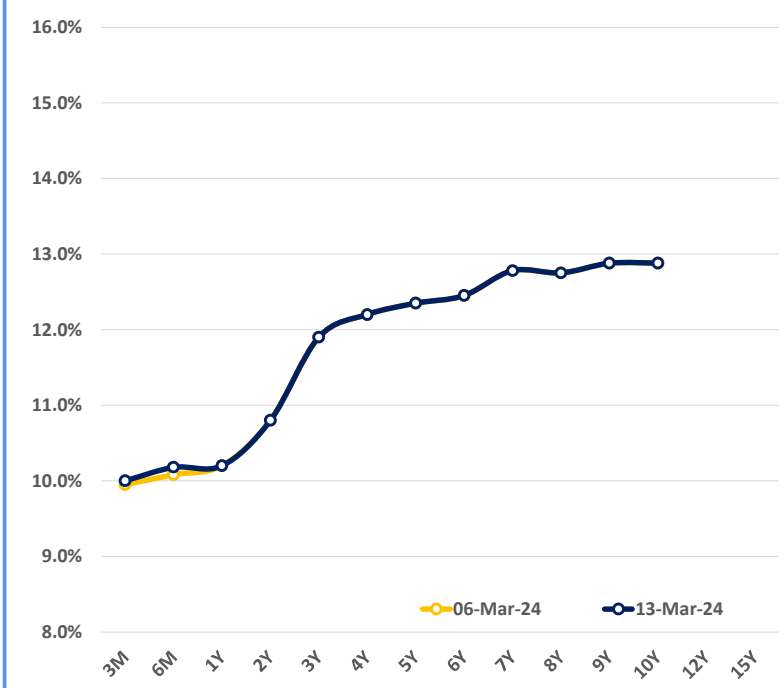
**EXCESS LIQUIDITY AND CBSL HOLDINGS**



**OUTSTANDING STOCK [GSEC]**

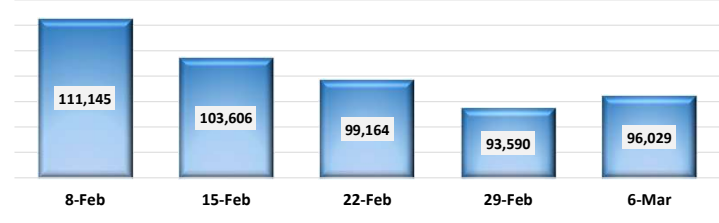


**BILLS AND BONDS YIELDS**

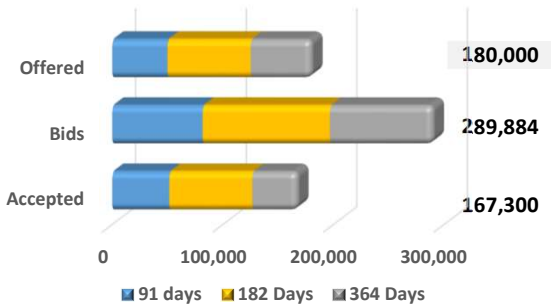


Tenure	Bid	Offer	Today	Last Week	Change (bps)
< 91 Days < 3M	10.10%	9.90%	10.00%	9.95%	+5
< 182 Days < 6M	10.25%	10.10%	10.18%	10.08%	+10
< 364 Days < 1Y	10.25%	10.15%	10.20%	10.20%	0
01-Feb-26 < 2Y	10.90%	10.70%	10.80%	10.80%	0
01-May-27 < 3Y	11.95%	11.85%	11.90%	11.90%	0
15-Mar-28 < 4Y	12.25%	12.15%	12.20%	12.20%	0
15-Jul-29 < 5Y	12.40%	12.30%	12.35%	12.35%	0
15-May-30 < 6Y	12.50%	12.40%	12.45%	12.45%	0
15-May-31 < 7Y	12.85%	12.70%	12.78%	12.78%	0
01-Jul-32 < 8Y	13.00%	12.50%	12.75%	12.75%	0
15-Jan-33 < 9Y	13.00%	12.75%	12.88%	12.88%	0
01-Jan-34 < 10Y	13.00%	12.75%	12.88%	12.88%	0
15-Mar-35 < 12Y	N/A	N/A	N/A	N/A	N/A
15-Aug-39 < 15Y	N/A	N/A	N/A	N/A	N/A
01-Jan-41 < 20Y	N/A	N/A	N/A	N/A	N/A

**FOREIGN HOLDING (LKR MN) **WoW 2.61%****



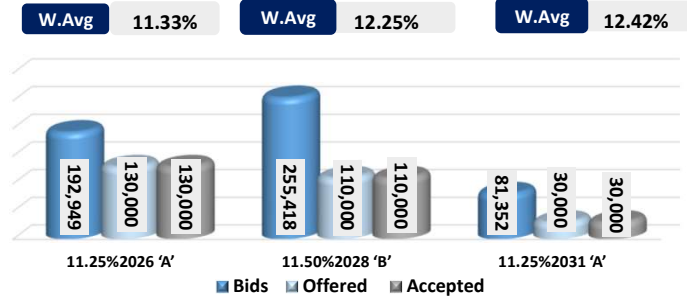
**T-BILL AUCTION (LKR MN)**



Auction Date: 13-Mar-24  
Settlement Date: 15-Mar-24

91 days	10.10%	▲	+14 bps
184 days	10.21%	▲	+13 bps
364 days	10.24%	▲	+10 bps

**T-BOND AUCTION (LKR MN)**



**MATURITY TABLE (LKR MN)**

