



First Capital  
A Jeevanlaxmi Group Company

# DAILY FIXED INCOME & UNIT TRUST







February 20, 2024

### "Selling dominates the secondary market"

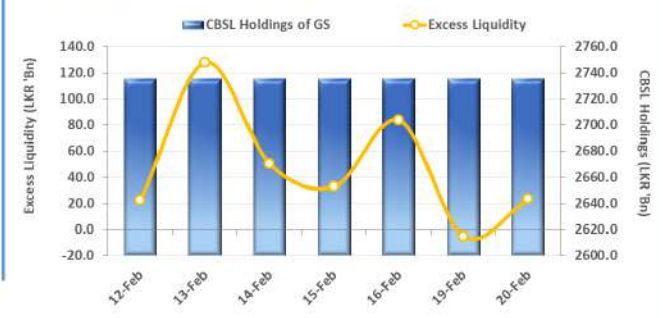
The secondary market witnessed a notable shift in sentiment, as the buying momentum observed during the past sessions continued to wane, with investors adopting a more cautious stance and opted to book profits throughout the day. Consequently, on the short to mid end of the curve, 2026 maturities including 01.02.26, 01.06.26, and 01.08.26 traded in the range of 11.00%-11.25%, whilst 15.09.27 traded between 11.80%-12.00%. Moreover, 2028 maturities including 15.03.28, 01.07.28, and 15.12.28 hovered in the range of 12.10%-12.40%. Meanwhile, CBSL announced the issuance of LKR 120.0Bn in T-Bills through an auction scheduled for tomorrow. Out of this, LKR 30.0Bn is expected to be raised from 91-day maturity, LKR 40.0Bn from 182-day maturity, and LKR 50.0Bn from 364-day maturity. Moreover, overnight liquidity improved during the day and recorded a net liquidity surplus of LKR 23.3Bn, whilst CBSL holdings remained stagnant at LKR 2,735.6Bn. On the external side LKR continued to appreciate against the USD for the 4th consecutive day, closing at LKR 312.3 during the day.

### UNIT TRUSTS

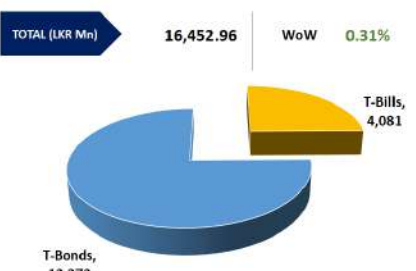
First Capital Unit Trust Funds			Sell Price	Buy Price	Avg. Yield
			LKR	LKR	
First Capital Money Market Fund	FCMMF		2,986.95	2,986.95	14.88%
First Capital Gilt Edge Fund	FCGEF		2,296.85	2,296.85	11.03%
First Capital Wealth Fund	FCWF		1,801.39	1,801.34	83.78%
First Capital Equity Fund	FCCEF		2,274.62	2,160.89	N/A

19-Feb-24

### EXCESS LIQUIDITY AND CBSL HOLDINGS



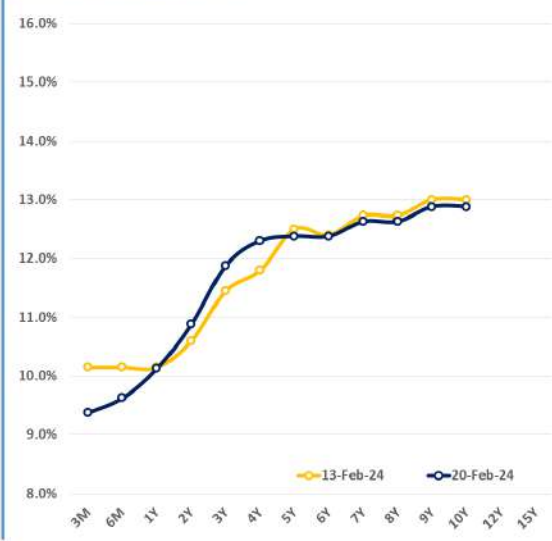
### OUTSTANDING STOCK [GSEC]



### FOREIGN HOLDING (LKR MN)

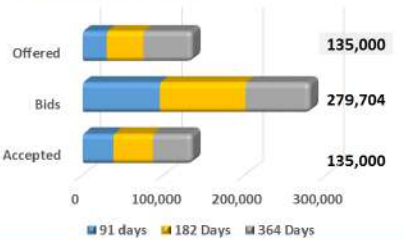


### BILLS AND BONDS YIELDS



Tenure	Bid	Offer	Today	Last Week	Change (bps)
< 91 Days < 3M	9.50%	9.25%	9.38%	10.15%	-77
< 182 Days < 6M	9.75%	9.50%	9.63%	10.15%	-52
< 364 Days < 1Y	10.25%	10.00%	10.13%	10.15%	-2
01-Feb-26 < 2Y	11.00%	10.75%	10.88%	10.60%	+28
01-May-27 < 3Y	12.00%	11.75%	11.88%	11.45%	+43
15-Mar-28 < 4Y	12.40%	12.20%	12.30%	11.80%	+50
15-Jul-29 < 5Y	12.50%	12.25%	12.38%	12.50%	-12
15-May-30 < 6Y	12.50%	12.25%	12.38%	12.40%	-2
15-May-31 < 7Y	12.75%	12.50%	12.63%	12.73%	-10
01-Jul-32 < 8Y	12.75%	12.50%	12.63%	12.73%	-10
15-Jan-33 < 9Y	13.00%	12.75%	12.88%	13.00%	-12
01-Jan-34 < 10Y	13.00%	12.75%	12.88%	13.00%	-12
15-Mar-35 < 12Y	N/A	N/A	N/A	N/A	N/A
15-Aug-39 < 15Y	N/A	N/A	N/A	N/A	N/A
01-Jan-41 < 20Y	N/A	N/A	N/A	N/A	N/A

### T-BILL AUCTION (LKR MN)



### T-BOND AUCTION (LKR MN)

Auction Date		14-Feb-24	
Settlement Date		16-Feb-24	
91 days	9.79%	▼	-117 bps
184 days	9.86%	▼	-121 bps
364 days	10.02%	▼	-71 bps

### T-BOND AUCTION (LKR MN)



### MATURITY TABLE (LKR MN)

