



First Capital
A Jeevanlaxmi Group Company

DAILY FIXED INCOME & UNIT TRUST



February 27, 2024

"Activities take a lackluster tone ahead of the weekly auction"

Secondary market yield curve slightly adjusted downwards following today's session despite activities being subdued while volumes were thin. Displaying a mixed sentiment, liquid tenors such as 2026, 2027 and 2028 enticed trades during the day. Accordingly, 2026 maturities, 01.02.2026, 15.05.2026, 01.08.2026 and 15.12.2026 observed trades in the range 10.65%-11.00%. Moreover, 15.09.2027 registered trades at 11.90% levels while 2028 maturities, 15.01.2028, 01.05.2028 and 01.07.2028 hovered between 12.10%-12.20%. However, clear buying appetite was perceptible on the 15.05.2030 maturity which changed hands at 12.30%. Meanwhile, CBSL expects to raise LKR 122.5Bn from the weekly T-Bill auction scheduled for tomorrow, offering LKR 35.0Bn from 91-days maturity, LKR 47.5Bn from 182-days maturity and LKR 40.0Bn from the 364-days maturity. On the external side, LKR continued to appreciate against the greenback for the 08th straight day closing at 310.8. Meanwhile, overnight liquidity for the day closed at LKR -37.3Bn while CBSL holdings remained steady at LKR 2,715.6Bn.

UNIT TRUSTS

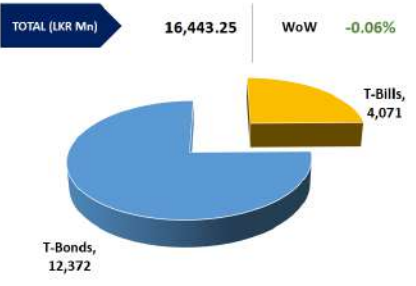
26-Feb-24

First Capital Unit Trust Funds			Sell Price	Buy Price	Avg. Yield
			LKR	LKR	
First Capital Money Market Fund	FCMMF		2,995.47	2,995.47	14.87%
First Capital Gilt Edge Fund	FCGEF		2,301.56	2,301.56	10.69%
First Capital Wealth Fund	FCWF		1,804.24	1,804.19	74.62%
First Capital Equity Fund	FCCEF		2,263.55	2,150.37	N/A

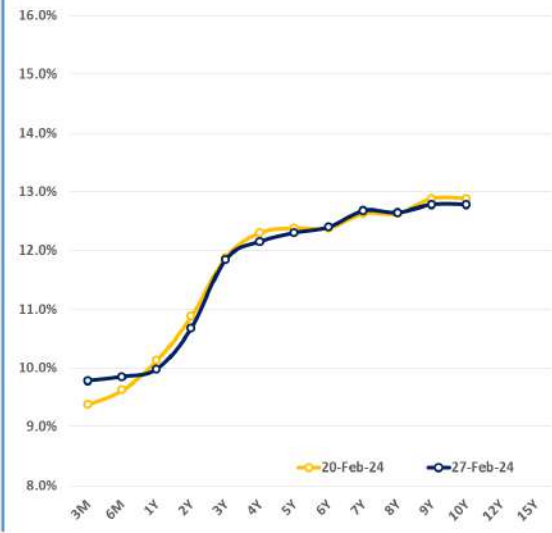
EXCESS LIQUIDITY AND CBSL HOLDINGS



OUTSTANDING STOCK [GSEC]

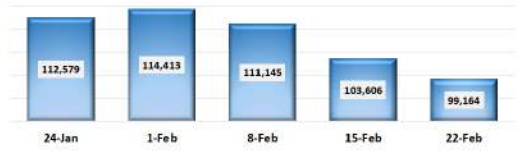


BILLS AND BONDS YIELDS

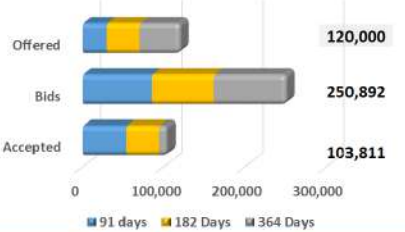


Tenure	Bid	Offer	Today	Last Week	Change (bps)
< 91 Days < 3M	9.85%	9.70%	9.78%	9.38%	+40
< 182 Days < 6M	9.95%	9.75%	9.85%	9.63%	+22
< 364 Days < 1Y	10.05%	9.90%	9.98%	10.13%	-15
01-Feb-26 < 2Y	10.75%	10.60%	10.68%	10.88%	-20
01-May-27 < 3Y	11.90%	11.80%	11.85%	11.88%	-3
15-Mar-28 < 4Y	12.20%	12.10%	12.15%	12.30%	-15
15-Jul-29 < 5Y	12.35%	12.25%	12.30%	12.38%	-8
15-May-30 < 6Y	12.50%	12.30%	12.40%	12.38%	+2
15-May-31 < 7Y	12.75%	12.60%	12.68%	12.63%	+5
01-Jul-32 < 8Y	12.90%	12.40%	12.65%	12.63%	+2
15-Jan-33 < 9Y	12.90%	12.65%	12.78%	12.88%	-10
01-Jan-34 < 10Y	12.90%	12.65%	12.78%	12.88%	-10
15-Mar-35 < 12Y	N/A	N/A	N/A	N/A	N/A
15-Aug-39 < 15Y	N/A	N/A	N/A	N/A	N/A
01-Jan-41 < 20Y	N/A	N/A	N/A	N/A	N/A

FOREIGN HOLDING (LKR MN) WoW -4.29%



T-BILL AUCTION (LKR MN)



Auction Date: 21-Feb-24

Settlement Date: 26-Feb-24

91 days	9.78%	▼	-1 bps
184 days	9.86%	◀▶	0 bps
364 days	10.02%	◀▶	0 bps

T-BOND AUCTION (LKR MN)



MATURITY TABLE (LKR MN)

