



First Capital
A Janashakthi Group Company

DAILY FIXED INCOME & UNIT TRUST







April 1, 2024

"Market adopts a sluggish stance"

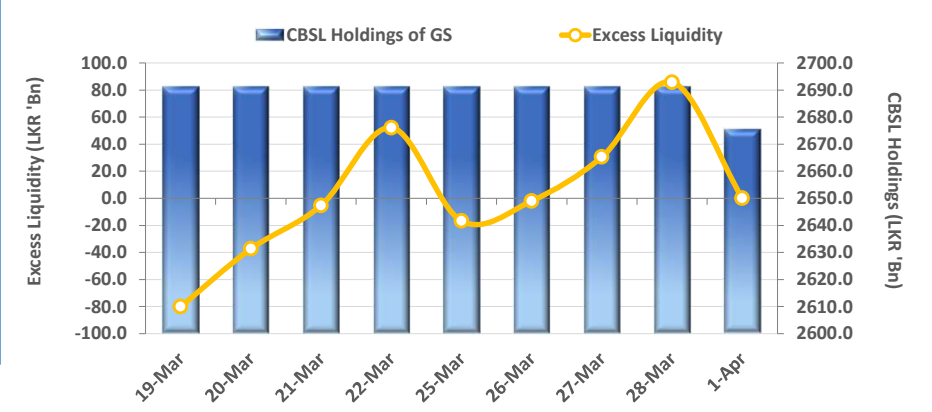
The secondary market commenced the week on a sluggish stance, continuing the trend from the previous session as the market remained broadly stagnant. Limited activities were recorded throughout the day as short and mid tenors enticed most of the trades with 15.05.26 maturity traded at 11.28%, 15.12.26 traded at 11.30%, 15.12.28 traded at 12.15% and 15.03.31 traded at 12.35%. Notably, AWPLR was recorded below the 11.00%, mark at 10.69% for the week ending 28th Mar-24, registering a 2-year low, influenced by the 50bps rate cut announced at the Monetary Policy review meeting which was held on the 25th Mar-24. CBSL holdings declined during the day and recorded at LKR 2,675.6Bn. On the external side LKR slightly appreciated against the USD recording at LKR 300.4.

UNIT TRUSTS

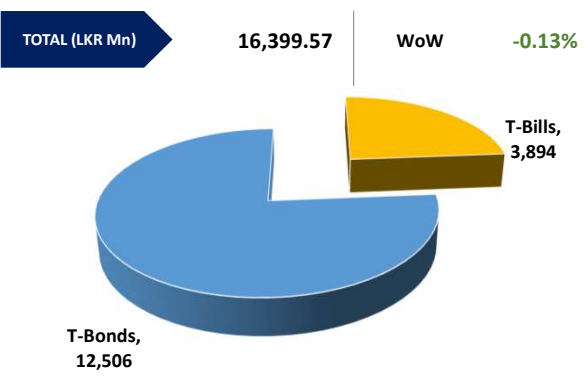
31-Mar-24

First Capital Unit Trust Funds			Sell Price	Buy Price	Avg. Yield
			LKR	LKR	
First Capital Money Market Fund	FCMMF		3,036.45	3,036.45	14.79%
First Capital Gilt Edge Fund	FCGEF		2,317.29	2,317.29	10.73%
First Capital Wealth Fund	FCWF		1,825.60	1,825.55	52.04%
First Capital Equity Fund	FCCEF		2,403.99	2,283.79	N/A

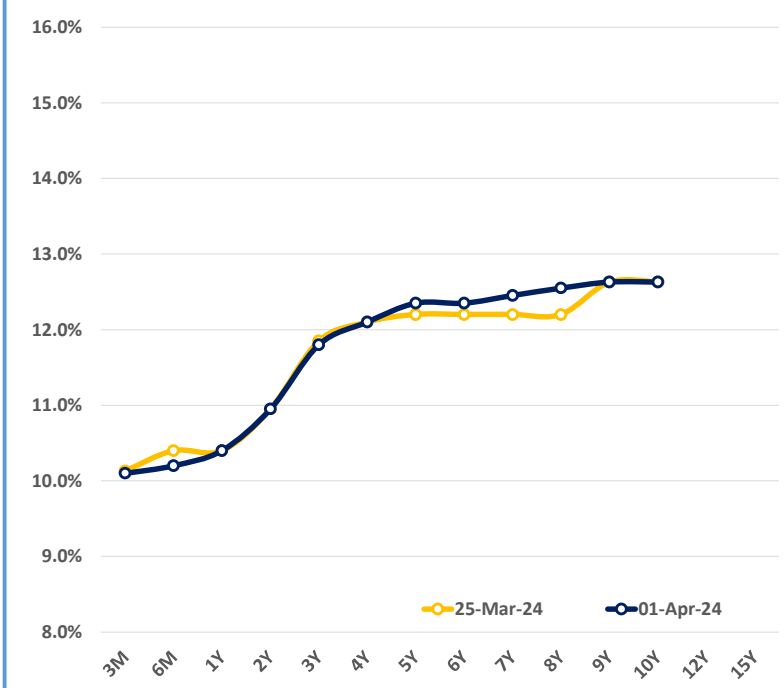
EXCESS LIQUIDITY AND CBSL HOLDINGS



OUTSTANDING STOCK [GSEC]

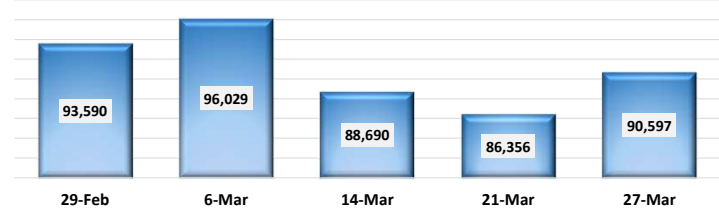


BILLS AND BONDS YIELDS

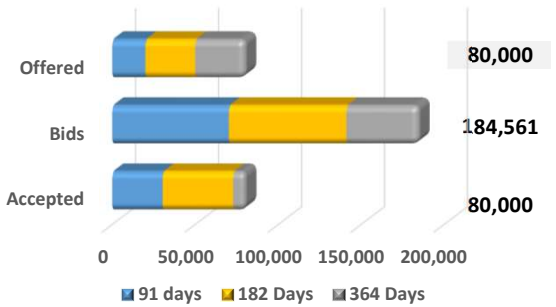


Tenure	Bid	Offer	Today	Last Week	Change (bps)
< 91 Days < 3M	10.20%	10.00%	10.10%	10.13%	-3
< 182 Days < 6M	10.25%	10.15%	10.20%	10.40%	-20
< 364 Days < 1Y	10.50%	10.30%	10.40%	10.40%	0
01-Feb-26 < 2Y	11.00%	10.90%	10.95%	10.95%	0
01-May-27 < 3Y	11.85%	11.75%	11.80%	11.85%	-5
15-Mar-28 < 4Y	12.15%	12.05%	12.10%	12.10%	0
15-Jul-29 < 5Y	12.40%	12.30%	12.35%	12.20%	+15
15-May-30 < 6Y	12.40%	12.30%	12.35%	12.20%	+15
15-May-31 < 7Y	12.50%	12.40%	12.45%	12.20%	+25
01-Jul-32 < 8Y	12.60%	12.50%	12.55%	12.20%	+35
15-Jan-33 < 9Y	12.75%	12.50%	12.63%	12.63%	0
01-Jan-34 < 10Y	12.75%	12.50%	12.63%	12.63%	0
15-Mar-35 < 12Y	N/A	N/A	N/A	N/A	N/A
15-Aug-39 < 15Y	N/A	N/A	N/A	N/A	N/A
01-Jan-41 < 20Y	N/A	N/A	N/A	N/A	N/A

FOREIGN HOLDING (LKR MN)



T-BILL AUCTION (LKR MN)

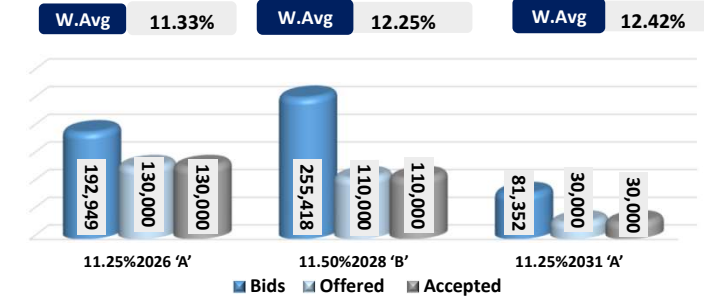


Auction Date: 27-Mar-24

Settlement Date: 1-Apr-24

91 days	10.07%	▼	-16 bps
184 days	10.23%	▼	-12 bps
364 days	10.28%	▼	-10 bps

T-BOND AUCTION (LKR MN)



MATURITY TABLE (LKR MN)

