


First Capital
A Janashakthi Group Company

DAILY FIXED INCOME & UNIT TRUST



April 2, 2024

"Yields stay static ahead of the T-Bill auction"

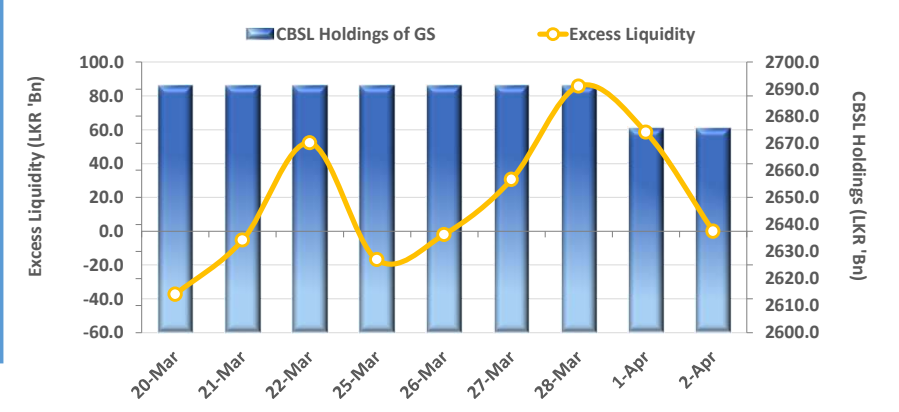
The secondary market yield curve remained broadly unchanged as the market participants opted to lay low ahead of the T-Bill auction scheduled to be held on 03rd Apr 2024. Accordingly, the overall market delivered low volumes with limited activities. During the day, 2026 maturities hovered in the range of 11.25% - 11.35% while trades for 01.05.27 and 01.09.27 settled at 11.75% and 11.91%, respectively. Moreover, slight interest was observed on liquid tenors with 15.03.28, and 01.07.28 traded at 12.15% and 12.20% whilst 15.07.29 closed at 12.40%. Moreover, CBSL announced an issue of LKR 135.0Bn T-Bills through an auction to be held tomorrow, out of which LKR 30.0Bn is to be raised from 91-day maturity, LKR 60.0Bn is expected to be raised from 182-day maturity while LKR 45.0Bn is to be raised from 364-day maturity. On the external side, the LKR marginally appreciated against the USD, closing at LKR 300.14 during the day.

UNIT TRUSTS

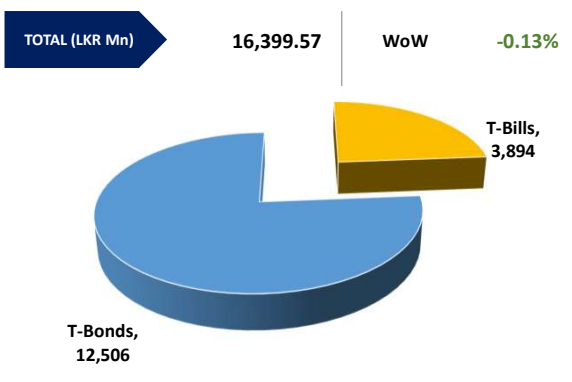
01-Apr-24

| First Capital Unit Trust Funds | | | Sell Price | Buy Price | Avg. Yield |
|---------------------------------|-------|--|------------|-----------|------------|
| | | | LKR | LKR | |
| First Capital Money Market Fund | FCMMF | | 3,037.51 | 3,037.51 | 14.67% |
| First Capital Gilt Edge Fund | FCGEF | | 2,317.79 | 2,317.79 | 11.23% |
| First Capital Wealth Fund | FCWF | | 1,826.05 | 1,826.00 | 51.59% |
| First Capital Equity Fund | FCCEF | | 2,447.31 | 2,324.94 | N/A |

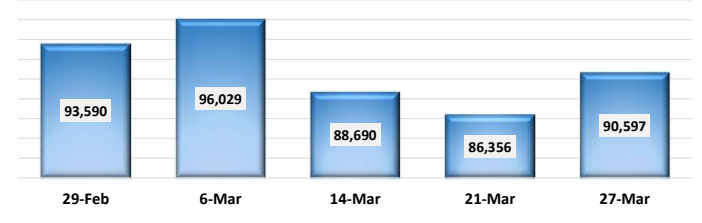
EXCESS LIQUIDITY AND CBSL HOLDINGS



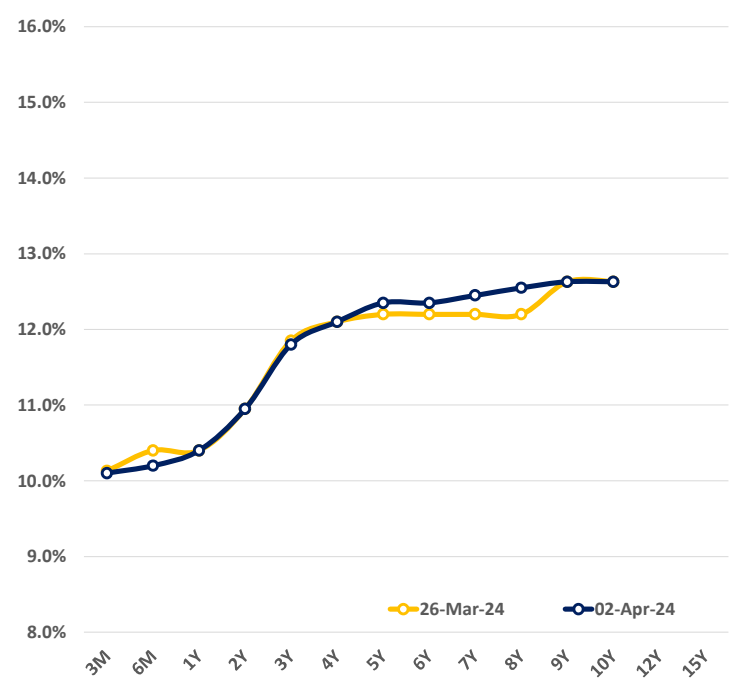
OUTSTANDING STOCK [GSEC]



FOREIGN HOLDING (LKR MN) WoW **4.91%**

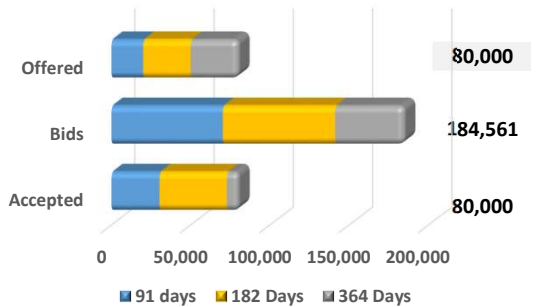


BILLS AND BONDS YIELDS



| Tenure | Bid | Offer | Today | Last Week | Change (bps) |
|-----------------|--------|--------|--------|-----------|--------------|
| < 91 Days < 3M | 10.20% | 10.00% | 10.10% | 10.13% | -3 |
| < 182 Days < 6M | 10.25% | 10.15% | 10.20% | 10.40% | -20 |
| < 364 Days < 1Y | 10.50% | 10.30% | 10.40% | 10.40% | 0 |
| 01-Feb-26 < 2Y | 11.00% | 10.90% | 10.95% | 10.95% | 0 |
| 01-May-27 < 3Y | 11.85% | 11.75% | 11.80% | 11.85% | -5 |
| 15-Mar-28 < 4Y | 12.15% | 12.05% | 12.10% | 12.10% | 0 |
| 15-Jul-29 < 5Y | 12.40% | 12.30% | 12.35% | 12.20% | +15 |
| 15-May-30 < 6Y | 12.40% | 12.30% | 12.35% | 12.20% | +15 |
| 15-May-31 < 7Y | 12.50% | 12.40% | 12.45% | 12.20% | +25 |
| 01-Jul-32 < 8Y | 12.60% | 12.50% | 12.55% | 12.20% | +35 |
| 15-Jan-33 < 9Y | 12.75% | 12.50% | 12.63% | 12.63% | 0 |
| 01-Jan-34 < 10Y | 12.75% | 12.50% | 12.63% | 12.63% | 0 |
| 15-Mar-35 < 12Y | N/A | N/A | N/A | N/A | N/A |
| 15-Aug-39 < 15Y | N/A | N/A | N/A | N/A | N/A |
| 01-Jan-41 < 20Y | N/A | N/A | N/A | N/A | N/A |

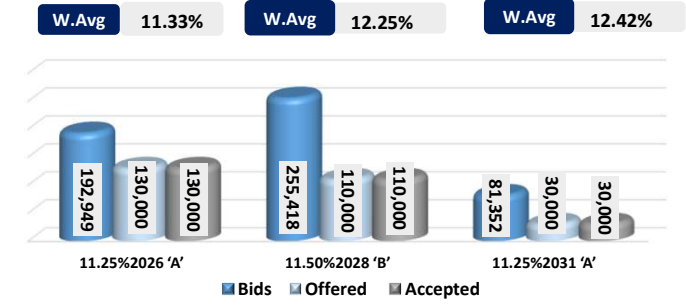
T-BILL AUCTION (LKR MN)



Auction Date: 27-Mar-24
Settlement Date: 1-Apr-24

| | | | |
|----------|--------|---|---------|
| 91 days | 10.07% | ▼ | -16 bps |
| 184 days | 10.23% | ▼ | -12 bps |
| 364 days | 10.28% | ▼ | -10 bps |

T-BOND AUCTION (LKR MN)



MATURITY TABLE (LKR MN)

