

First Capital
A Janashakthi Group Company

DAILY FIXED INCOME & UNIT TRUST







April 4, 2024

"Market adopts a sluggish trend"

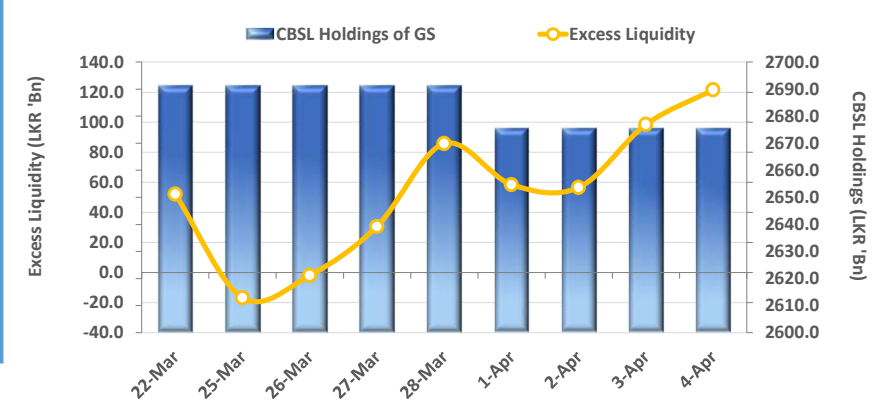
The secondary market remained sluggish for yet another day, with minimal activity observed on the back of limited trades. Short and mid tenors mostly registered trades during the day as, 15.09.27 tenor traded at 12.00% whilst, 15.01.28 traded at 12.10%. Notably, LKR 85.0Bn, bond auction is to be held on the 8th of Apr-24 where, LKR 25.0Bn is to be issued out of 15.12.26 maturity, LKR 25.0Bn is to be issued out of 15.09.29 maturity and LKR 35.0Bn is to be issued out of 01.10.32 maturity. Meanwhile, Overnight liquidity improved compared to the previous day registering at LKR 121.5Bn and CBSL holdings recorded at LKR 2,675.6Bn. On the external side LKR marginally appreciated against the USD recording at LKR 299.89 at the end of the day.

UNIT TRUSTS

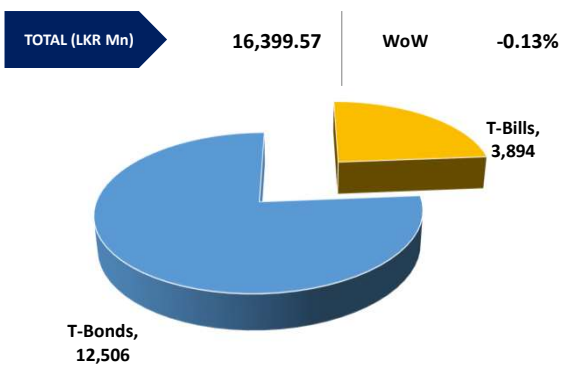
03-Apr-24

First Capital Unit Trust Funds			Sell Price	Buy Price	Avg. Yield
			LKR	LKR	
First Capital Money Market Fund	FCMMF		3,039.63	3,039.63	13.78%
First Capital Gilt Edge Fund	FCGEF		2,318.92	2,318.92	7.54%
First Capital Wealth Fund	FCWF		1,827.29	1,827.24	50.79%
First Capital Equity Fund	FCCEF		2,485.70	2,361.41	N/A

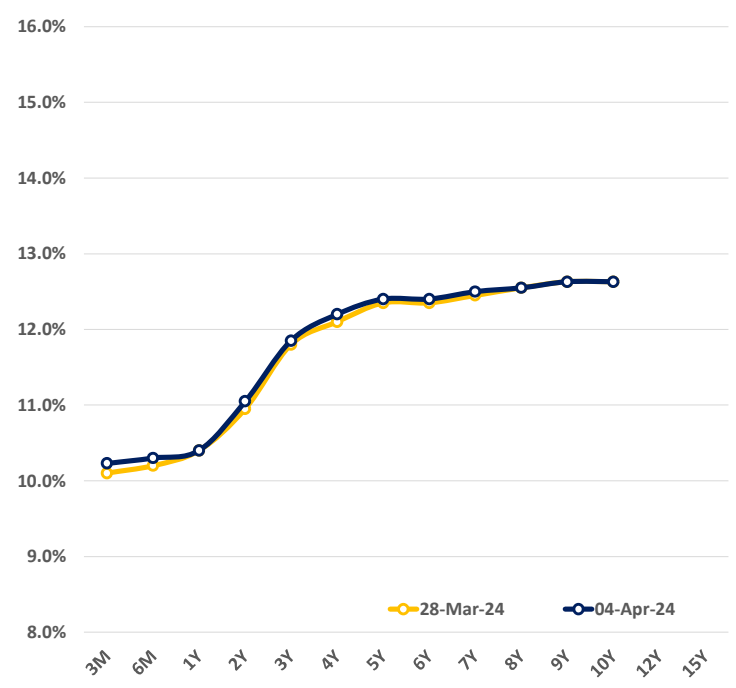
EXCESS LIQUIDITY AND CBSL HOLDINGS



OUTSTANDING STOCK [GSEC]

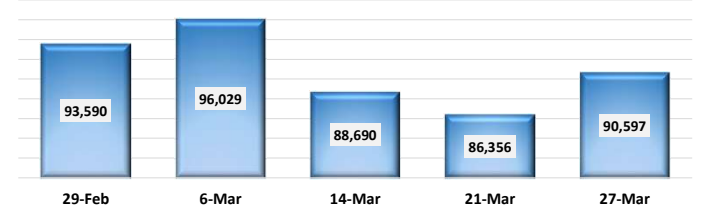


BILLS AND BONDS YIELDS

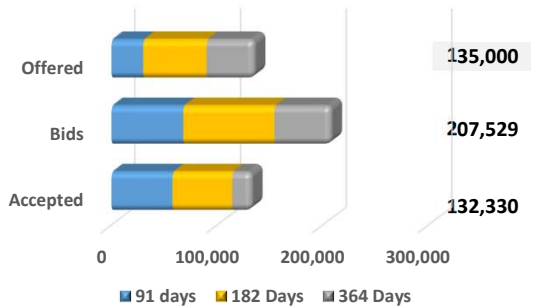


Tenure	Bid	Offer	Today	Last Week	Change (bps)
< 91 Days < 3M	10.30%	10.15%	10.23%	10.10%	+13
< 182 Days < 6M	10.40%	10.20%	10.30%	10.20%	+10
< 364 Days < 1Y	10.50%	10.30%	10.40%	10.40%	0
01-Feb-26 < 2Y	11.10%	11.00%	11.05%	10.95%	+10
01-May-27 < 3Y	11.90%	11.80%	11.85%	11.80%	+5
15-Mar-28 < 4Y	12.25%	12.15%	12.20%	12.10%	+10
15-Jul-29 < 5Y	12.50%	12.30%	12.40%	12.35%	+5
15-May-30 < 6Y	12.50%	12.30%	12.40%	12.35%	+5
15-May-31 < 7Y	12.60%	12.40%	12.50%	12.45%	+5
01-Jul-32 < 8Y	12.60%	12.50%	12.55%	12.55%	0
15-Jan-33 < 9Y	12.75%	12.50%	12.63%	12.63%	0
01-Jan-34 < 10Y	12.75%	12.50%	12.63%	12.63%	0
15-Mar-35 < 12Y	N/A	N/A	N/A	N/A	N/A
15-Aug-39 < 15Y	N/A	N/A	N/A	N/A	N/A
01-Jan-41 < 20Y	N/A	N/A	N/A	N/A	N/A

FOREIGN HOLDING (LKR MN) WoW 4.91%



T-BILL AUCTION (LKR MN)



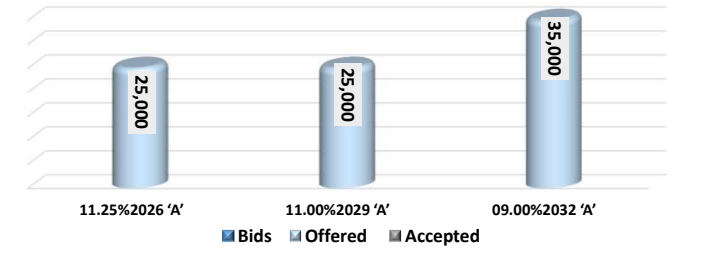
Auction Date 03-Apr-24

Settlement Date 05-Apr-24

91 days	10.11%	▲	+4 bps
184 days	10.30%	▲	+7 bps
364 days	10.28%	◀▶	0 bps

T-BOND AUCTION (LKR MN) Auction Date 08-Apr-24

New Auction Announcement



MATURITY TABLE (LKR MN) Week ending 12-Apr-24

