


First Capital
A Janashakthi Group Company

DAILY FIXED INCOME & UNIT TRUST



April 17, 2024

“Ultra-thin volumes continue in the secondary market with investors sidelined as debt restructuring talks progress”

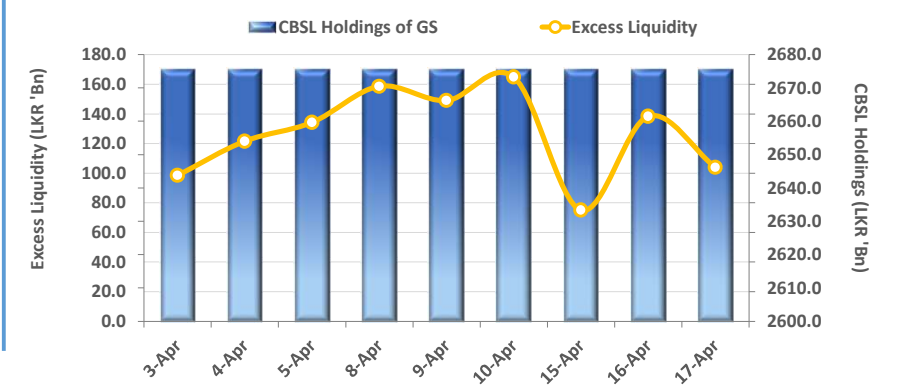
The secondary market enticed a mixed sentiment amid ultra-thin volumes during today's session, as investors took a cautious approach, eagerly waiting to see the outcome of the bondholder negotiations, which recommenced yesterday, following the March-24 talks, which ended up without a consensus. Thus, thin trades were observed on the belly-end of the yield curve with 01.07.25 maturity recording trades between 10.55%-10.60% whilst 01.06.25 maturity traded at 11.15%. Moreover, trades were also observed on the 15.12.26 maturity, which saw trades at 11.34%-11.32% whilst 15.03.28 maturity saw trades taking place between 12.15%-12.10% during today's trading session. Meanwhile, CBSL conducted its weekly bill auction today and fully accepted the total offered LKR 78.0Bn. CBSL accepted LKR 30.0Bn from the 91-day bill at 10.03% (-07bps) whilst LKR 30.0Bn was accepted from the 182-day bill at 10.22% (-05bps). However, only part of the offered was accepted from the 364-day bill, accepting LKR 18.0Bn from the offered LKR 23.0Bn at 10.23% (-04bps). Meanwhile, on the external front, LKR continued to depreciate against the USD for the 2nd consecutive day and was recorded at LKR 299.83.

UNIT TRUSTS

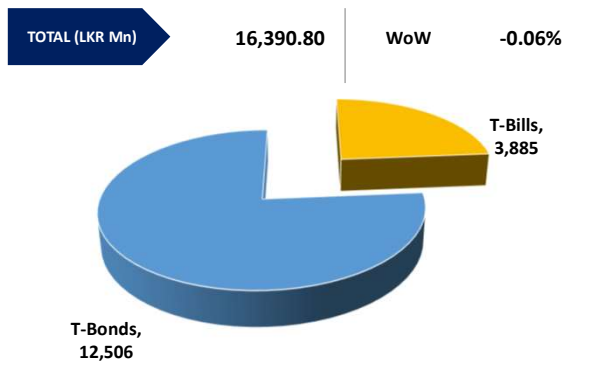
16-Apr-24

First Capital Unit Trust Funds			Sell Price	Buy Price	Avg. Yield
			LKR	LKR	
First Capital Money Market Fund	FCMMF		3,053.14	3,053.14	12.36%
First Capital Gilt Edge Fund	FCGEF		2,326.02	2,326.02	9.09%
First Capital Wealth Fund	FCWF		1,833.09	1,833.04	45.84%
First Capital Equity Fund	FCCEF		2,565.03	2,436.78	N/A

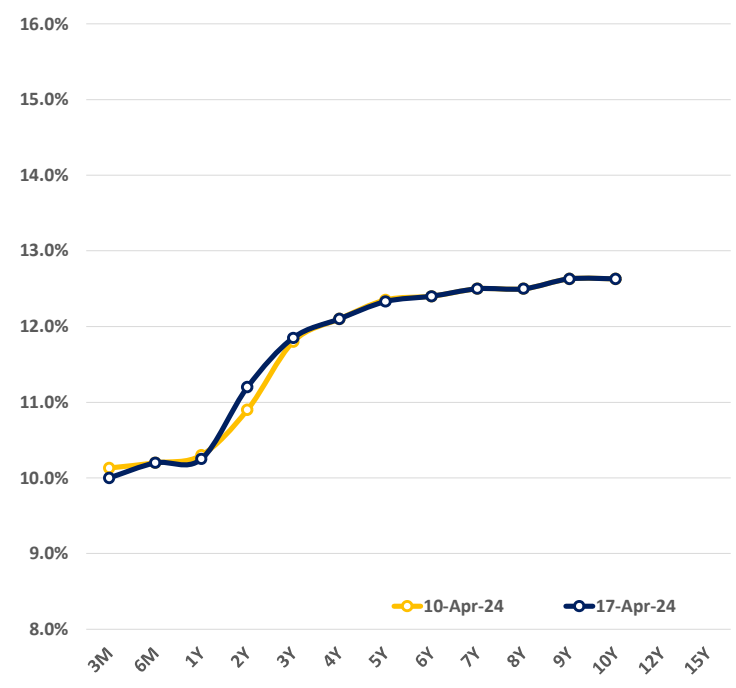
EXCESS LIQUIDITY AND CBSL HOLDINGS



OUTSTANDING STOCK [GSEC]

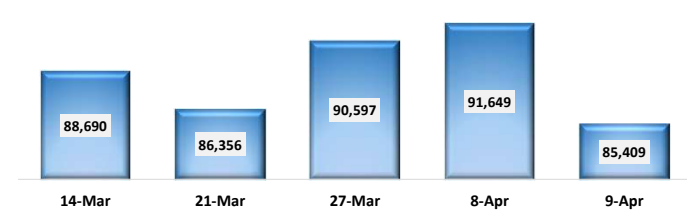


BILLS AND BONDS YIELDS

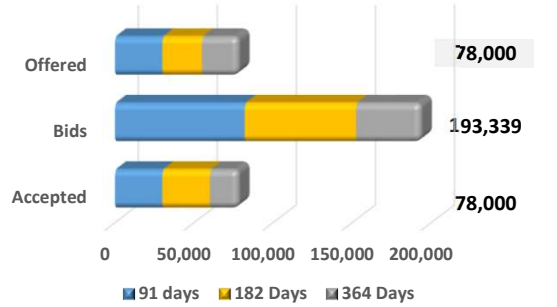


Tenure	Bid	Offer	Today	Last Week	Change (bps)
< 91 Days < 3M	10.10%	9.90%	10.00%	10.13%	-13
< 182 Days < 6M	10.25%	10.15%	10.20%	10.20%	0
< 364 Days < 1Y	10.30%	10.20%	10.25%	10.30%	-5
15-Jun-26 < 2Y	11.25%	11.15%	11.20%	10.90%	+30
01-May-27 < 3Y	11.90%	11.80%	11.85%	11.80%	+5
15-Mar-28 < 4Y	12.15%	12.05%	12.10%	12.10%	0
15-Jul-29 < 5Y	12.40%	12.25%	12.33%	12.35%	-2
15-May-30 < 6Y	12.50%	12.30%	12.40%	12.40%	0
15-May-31 < 7Y	12.60%	12.40%	12.50%	12.50%	0
01-Jul-32 < 8Y	12.60%	12.40%	12.50%	12.50%	0
15-Jan-33 < 9Y	12.75%	12.50%	12.63%	12.63%	0
01-Jan-34 < 10Y	12.75%	12.50%	12.63%	12.63%	0
15-Mar-35 < 12Y	N/A	N/A	N/A	N/A	N/A
15-Aug-39 < 15Y	N/A	N/A	N/A	N/A	N/A
01-Jan-41 < 20Y	N/A	N/A	N/A	N/A	N/A

FOREIGN HOLDING (LKR MN)



T-BILL AUCTION (LKR MN)



Auction Date: 17-Apr-24

Settlement Date: 19-Apr-24

91 days	10.03%	▼	-7 bps
184 days	10.22%	▼	-5 bps
364 days	10.23%	▼	-4 bps

T-BOND AUCTION (LKR MN)

Auction Date: 8-Apr-24



MATURITY TABLE (LKR MN)

Week ending: 26-Apr-24

