


First Capital
A Janashakthi Group Company

DAILY FIXED INCOME & UNIT TRUST







April 19, 2024

"Dreary sentiment continues for a yet another day in the secondary market"

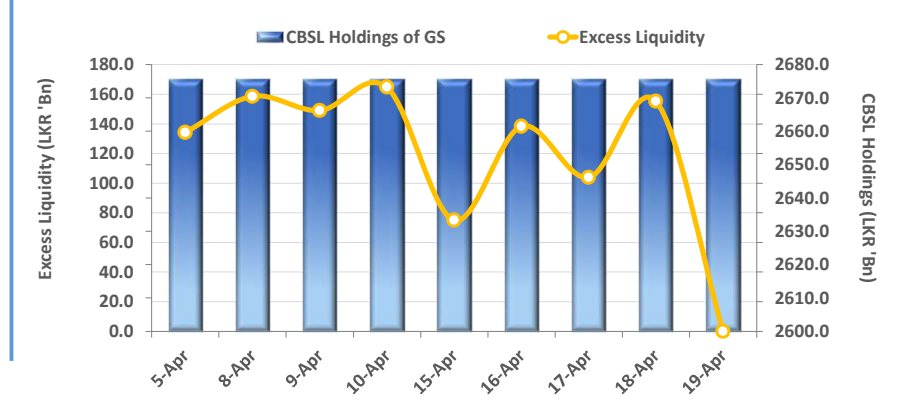
Slight selling interest persisted for yet another day in the secondary market, with limited activities taking place on the belly end of the curve, largely on the investor favorite 2027 and 2028 maturities. Few trades took place between 11.35% to 11.38% on the 15.01.27 maturity whilst trades were also recorded on the 01.05.27 maturity at 11.85% and 15.09.27 maturity between 11.95%-12.00%. Moreover, on the 2028 tenure, several trades took place on the 15.03.28 and 15.12.28 maturities at 12.20% and 12.30%, respectively. Meanwhile, on the external front, LKR continued to depreciate against the greenback and recorded at LKR 301.27, whilst the weekly AWPR for the week ended 10th April 2024, climbed up higher after 10 consecutive weeks to 10.63% from 10.56% in the previous week.

UNIT TRUSTS

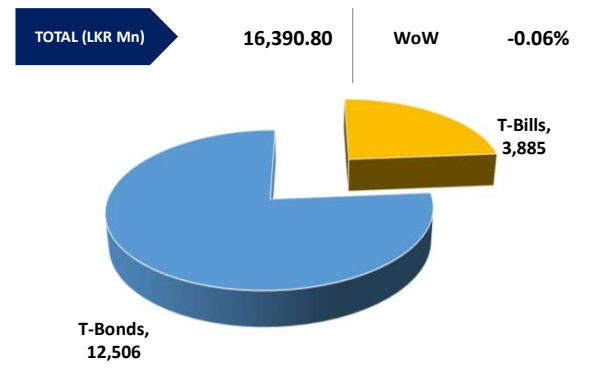
18-Apr-24

First Capital Unit Trust Funds			Sell Price	Buy Price	Avg. Yield
			LKR	LKR	
First Capital Money Market Fund	FCMMF		3,055.23	3,055.23	12.42%
First Capital Gilt Edge Fund	FCGEF		2,327.37	2,327.37	9.36%
First Capital Wealth Fund	FCWF		1,834.21	1,834.16	45.23%
First Capital Equity Fund	FCCEF		2,518.79	2,392.85	N/A

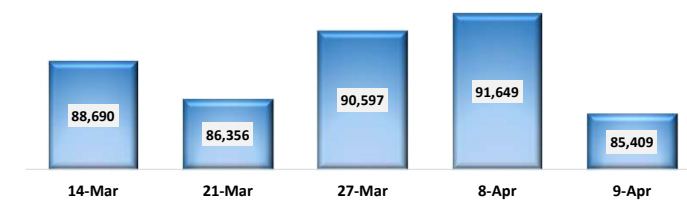
EXCESS LIQUIDITY AND CBSL HOLDINGS



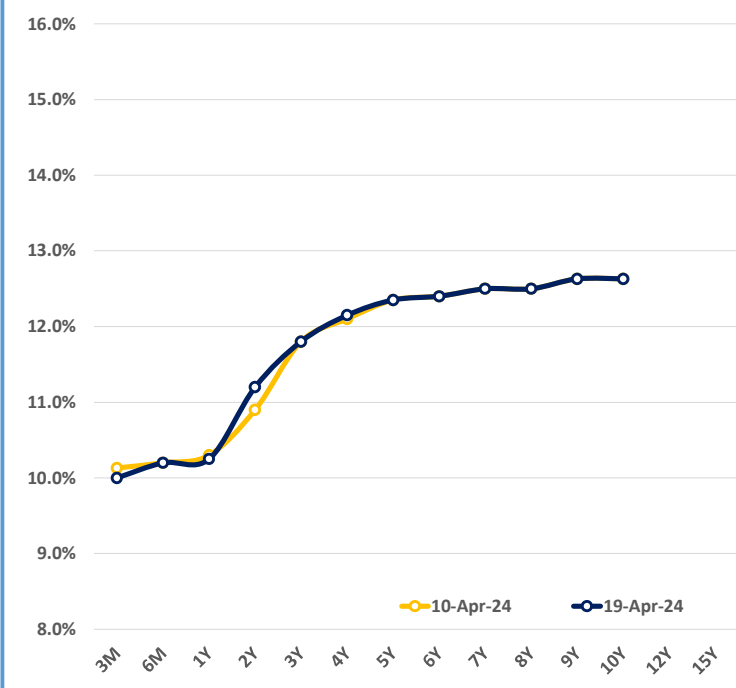
OUTSTANDING STOCK [GSEC]



FOREIGN HOLDING (LKR MN)

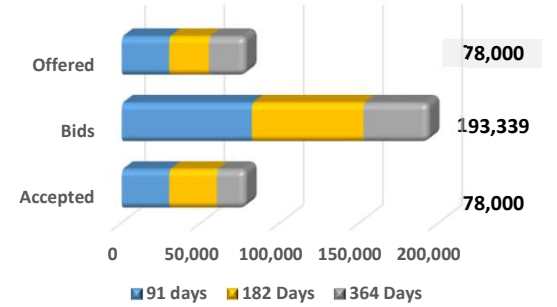


BILLS AND BONDS YIELDS



Tenure	Bid	Offer	Today	Last Week	Change (bps)
< 91 Days < 3M	10.10%	9.90%	10.00%	10.13%	-13
< 182 Days < 6M	10.25%	10.15%	10.20%	10.20%	0
< 364 Days < 1Y	10.30%	10.20%	10.25%	10.30%	-5
15-Jun-26 < 2Y	11.25%	11.15%	11.20%	10.90%	+30
01-May-27 < 3Y	11.85%	11.75%	11.80%	11.80%	0
15-Mar-28 < 4Y	12.20%	12.10%	12.15%	12.10%	+5
15-Jul-29 < 5Y	12.40%	12.30%	12.35%	12.35%	0
15-May-30 < 6Y	12.50%	12.30%	12.40%	12.40%	0
15-May-31 < 7Y	12.60%	12.40%	12.50%	12.50%	0
01-Jul-32 < 8Y	12.60%	12.40%	12.50%	12.50%	0
15-Jan-33 < 9Y	12.75%	12.50%	12.63%	12.63%	0
01-Jan-34 < 10Y	12.75%	12.50%	12.63%	12.63%	0
15-Mar-35 < 12Y	N/A	N/A	N/A	N/A	N/A
15-Aug-39 < 15Y	N/A	N/A	N/A	N/A	N/A
01-Jan-41 < 20Y	N/A	N/A	N/A	N/A	N/A

T-BILL AUCTION (LKR MN)



Auction Date: 17-Apr-24

Settlement Date: 19-Apr-24

91 days	10.03%	▼	-7 bps
184 days	10.22%	▼	-5 bps
364 days	10.23%	▼	-4 bps

T-BOND AUCTION (LKR MN)

Auction Date: 08-Apr-24



MATURITY TABLE (LKR MN)

Week ending: 26-Apr-24

