


First Capital
A Janashakthi Group Company

DAILY FIXED INCOME & UNIT TRUST







April 24, 2024

"LKR 92.0Bn Bill auction fully accepted, with all maturities accepted after 11 auctions"

The secondary market continued to witness thin volumes and limited activities for yet another day, with activities largely centered on the belly-end of the curve. Few trades took place prior to the CBSL auction, with 01.06.26 trading at 11.15%, 01.08.26 trading at 11.14%, 15.12.26 trading at 11.34%, 01.05.27 trading at 11.80%, 15.09.27 trading at 11.90% whilst 15.03.28 and 01.07.28 maturities traded at 12.15% and 12.20% respectively. Furthermore, positive buying interest was observed on the LKR 92.0Bn bill auction held today, with CBSL fully accepting all offered across all tenures (since 31-Jan-24). CBSL accepted LKR 35.0Bn for the 91-day bill at 9.90% (-13bps) whilst LKR 30.0Bn and LKR 27.0Bn were accepted from the 182-day and 364-day maturities at 10.08% (-14bps) and 10.21% (-02bps), respectively. Furthermore, CBSL also announced the LKR 100.0Bn treasury bond auction, which is scheduled for 29th April 2024, in which CBSL is planning to raise LKR 25.0Bn from the 15.03.28 maturity whilst LKR 30.0Bn and LKR 45.0Bn are expected to be raised from 15.05.30 and 01.10.32 maturities. Meanwhile, as per the CBSL published data, Sri Lankan Rupee bounced back and appreciated to LKR 301.46 against the US Dollar, after recording 5 consecutive days of depreciation.

UNIT TRUSTS

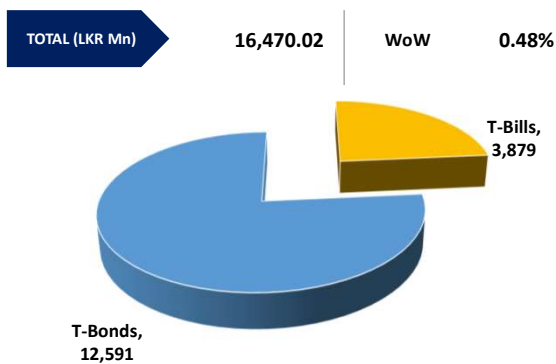
23-Apr-24

First Capital Unit Trust Funds			Sell Price	Buy Price	Avg. Yield
			LKR	LKR	
First Capital Money Market Fund	FCMMF		3,060.81	3,060.81	13.10%
First Capital Gilt Edge Fund	FCGEF		2,330.30	2,330.30	9.59%
First Capital Wealth Fund	FCWF		1,835.76	1,835.71	44.55%
First Capital Equity Fund	FCCEF		2,507.37	2,382.00	N/A

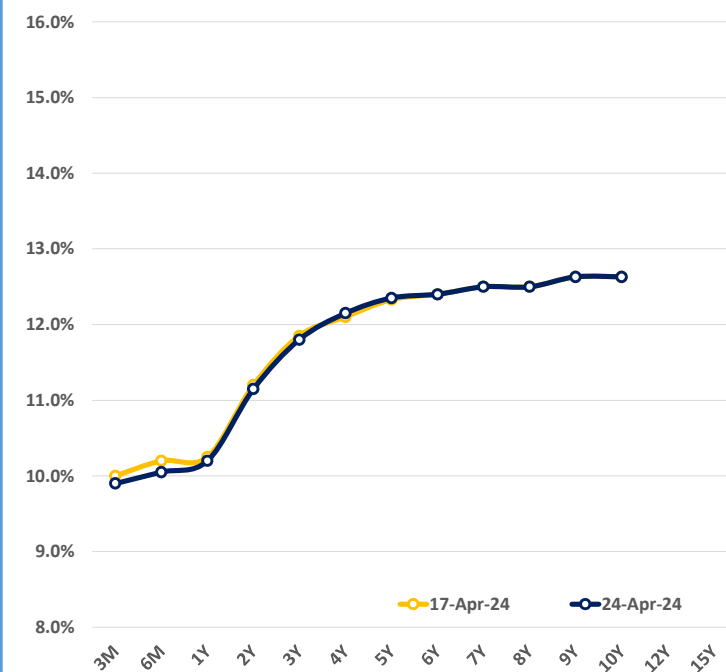
EXCESS LIQUIDITY AND CBSL HOLDINGS



OUTSTANDING STOCK [GSEC]

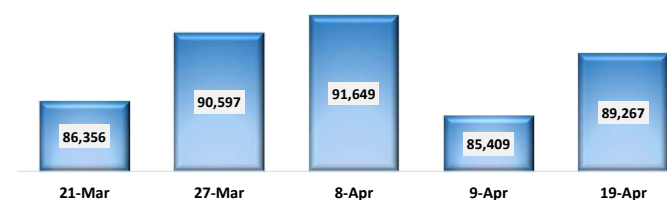


BILLS AND BONDS YIELDS

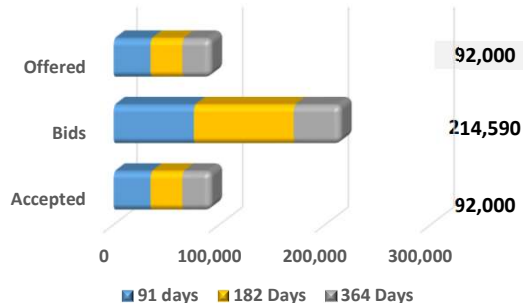


Tenure	Bid	Offer	Today	Last Week	Change (bps)
< 91 Days < 3M	9.95%	9.85%	9.90%	10.00%	-10
< 182 Days < 6M	10.10%	10.00%	10.05%	10.20%	-15
< 364 Days < 1Y	10.25%	10.15%	10.20%	10.25%	-5
15-Jun-26 < 2Y	11.20%	11.10%	11.15%	11.20%	-5
01-May-27 < 3Y	11.85%	11.75%	11.80%	11.85%	-5
15-Mar-28 < 4Y	12.20%	12.10%	12.15%	12.10%	+5
15-Jul-29 < 5Y	12.40%	12.30%	12.35%	12.33%	+2
15-May-30 < 6Y	12.50%	12.30%	12.40%	12.40%	0
15-May-31 < 7Y	12.60%	12.40%	12.50%	12.50%	0
01-Jul-32 < 8Y	12.60%	12.40%	12.50%	12.50%	0
15-Jan-33 < 9Y	12.75%	12.50%	12.63%	12.63%	0
01-Jan-34 < 10Y	12.75%	12.50%	12.63%	12.63%	0
15-Mar-35 < 12Y	N/A	N/A	N/A	N/A	N/A
15-Aug-39 < 15Y	N/A	N/A	N/A	N/A	N/A
01-Jan-41 < 20Y	N/A	N/A	N/A	N/A	N/A

FOREIGN HOLDING (LKR MN) WoW 4.52%



T-BILL AUCTION (LKR MN)



Auction Date 24-Apr-24

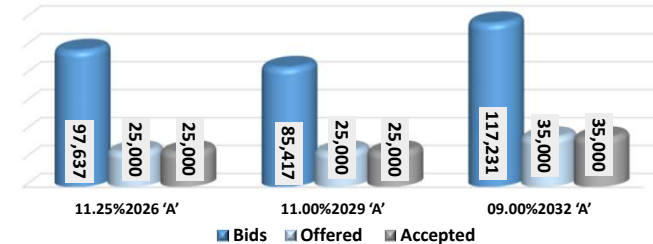
Settlement Date 26-Apr-24

91 days	9.90%	▼	-13 bps
184 days	10.08%	▼	-14 bps
364 days	10.21%	▼	-2 bps

T-BOND AUCTION (LKR MN)

Auction Date 8-Apr-24

W.Avg 11.44% W.Avg 12.37% W.Avg 12.51%



MATURITY TABLE (LKR MN)

Week ending 3-May-24

