


First Capital
A Janashakti Group Company

DAILY FIXED INCOME & UNIT TRUST



May 2, 2024

"Bullish sentiment extends to the 5th day"

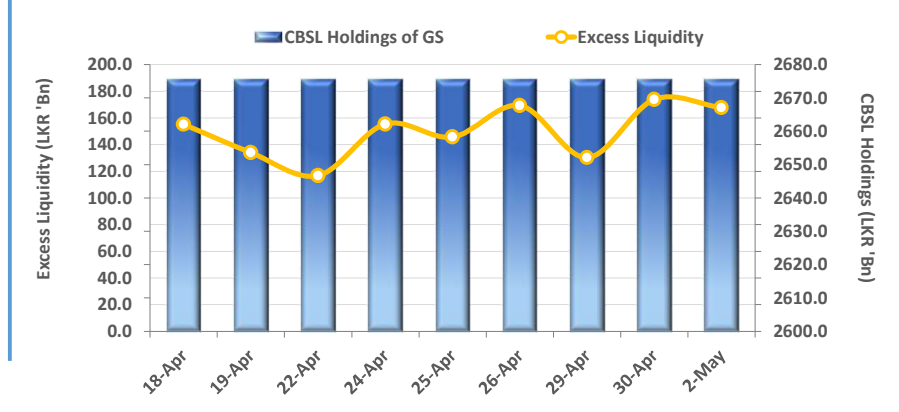
The yield curve nudged further down as the secondary market continued to see buying interest for the 5th consecutive session amidst positive investor sentiment while volumes were on moderate levels. On the short end of the curve, 01.02.2026 closed transactions at 10.40%. Further, 15.05.2026, 01.06.2026 and 15.12.2026 hovered between 10.85%-10.70%. Meanwhile, liquid maturities 2027 and 2028 too enticed interest at today's session. Accordingly, 15.09.2027 and 01.05.2027 traded between 11.20%-11.10% while on 2028 tenor; 15.01.2028, 15.03.2028, 01.07.2028 and 15.12.2028 hovered within a range of 11.70%-11.50%. On the long end, 15.05.2030 changed hands between 12.25%-12.15% whilst 01.10.2032 traded between 12.35%-12.30%. In terms of forex movement, LKR depreciated against the greenback closing at LKR 297.6. On the macro environment, there was a slight increase in headline inflation for Apr-24, with YoY CCPI rising to 1.5%, up from 0.9% in Mar-24.

UNIT TRUSTS

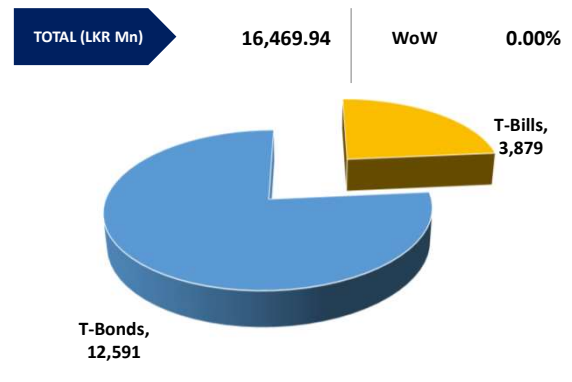
01-May-24

First Capital Unit Trust Funds			Sell Price	Buy Price	Avg. Yield
			LKR	LKR	
First Capital Money Market Fund	FCMMF		3,068.58	3,068.58	11.56%
First Capital Gilt Edge Fund	FCGEF		2,335.58	2,335.58	10.63%
First Capital Wealth Fund	FCWF		1,853.30	1,853.25	43.95%
First Capital Equity Fund	FCCEF		2,633.50	2,501.83	N/A

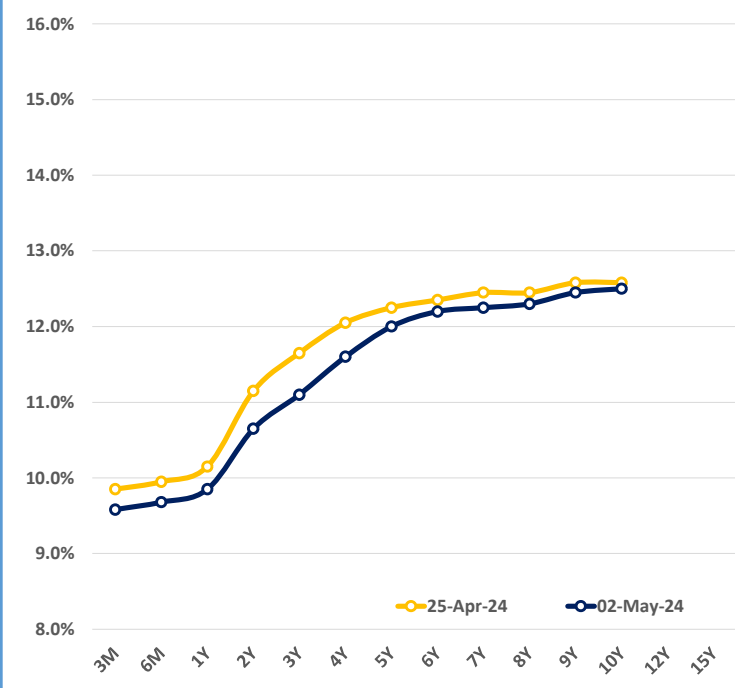
EXCESS LIQUIDITY AND CBSL HOLDINGS



OUTSTANDING STOCK [GSEC]

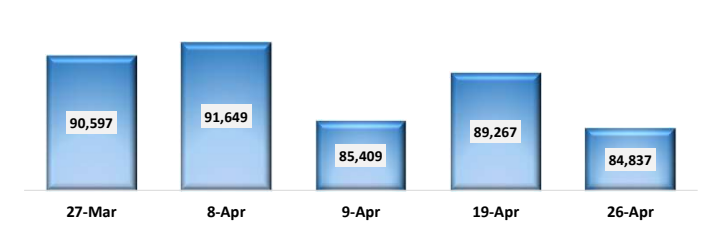


BILLS AND BONDS YIELDS

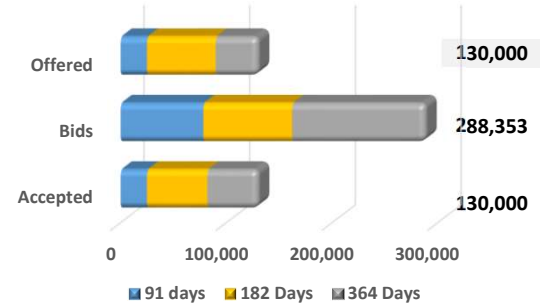


Tenure	Bid	Offer	Today	Last Week	Change (bps)
< 91 Days < 3M	9.65%	9.50%	9.58%	9.85%	-27
< 182 Days < 6M	9.75%	9.60%	9.68%	9.95%	-27
< 364 Days < 1Y	9.90%	9.80%	9.85%	10.15%	-30
01-Jun-26 < 2Y	10.70%	10.60%	10.65%	11.15%	-50
01-May-27 < 3Y	11.15%	11.05%	11.10%	11.65%	-55
15-Mar-28 < 4Y	11.65%	11.55%	11.60%	12.05%	-45
15-Jul-29 < 5Y	12.10%	11.90%	12.00%	12.25%	-25
15-May-30 < 6Y	12.25%	12.15%	12.20%	12.35%	-15
15-May-31 < 7Y	12.30%	12.20%	12.25%	12.45%	-20
01-Jul-32 < 8Y	12.35%	12.25%	12.30%	12.45%	-15
15-Jan-33 < 9Y	12.50%	12.40%	12.45%	12.58%	-13
01-Jan-34 < 10Y	12.60%	12.40%	12.50%	12.58%	-8
15-Mar-35 < 12Y	N/A	N/A	N/A	N/A	N/A
15-Aug-39 < 15Y	N/A	N/A	N/A	N/A	N/A
01-Jan-41 < 20Y	N/A	N/A	N/A	N/A	N/A

FOREIGN HOLDING (LKR MN) | WoW -4.96%



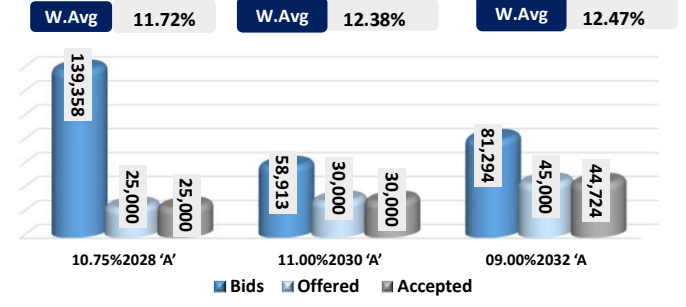
T-BILL AUCTION (LKR MN)



Auction Date: 30-Apr-24 | Settlement Date: 3-May-24

91 days	9.61%	▼	-29 bps
184 days	9.89%	▼	-19 bps
364 days	9.99%	▼	-22 bps

T-BOND AUCTION (LKR MN) | Auction Date: 29-Apr-24



MATURITY TABLE (LKR MN) | Week ending: 10-May-24

