


First Capital
A Janashakti Group Company

DAILY FIXED INCOME & UNIT TRUST



May 7, 2024

"Thin volumes ahead of the bill auction"

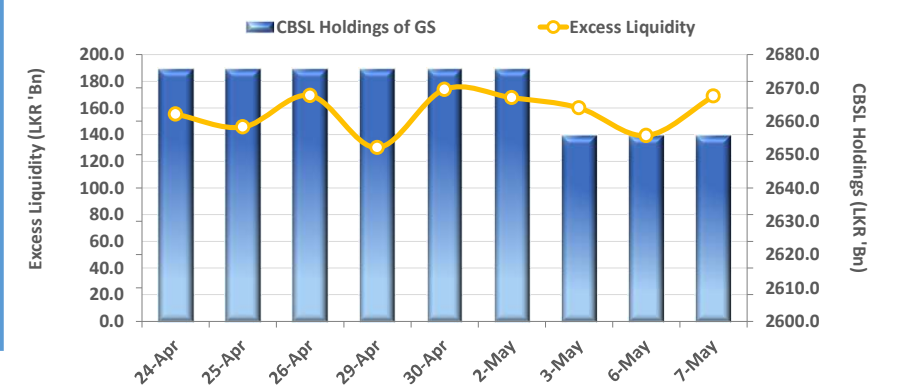
The secondary market saw slight buying interest during the early trading hours, largely on the 01.06.26 maturity, which recorded trades at 10.50%. However, selling interest emerged on the back of profit taking towards the latter part of the day, with interest emerging on 15.12.26 at 10.70%, 01.05.27 at 11.00% and 15.09.27 at 11.10%. The secondary market yield curve was more or less unchanged during the day amidst thin trading volumes. Meanwhile, CBSL weekly bill auction is scheduled for tomorrow, where a total of LKR 155.0Bn is expected to be raised, with LKR 30.0Bn expected to be raised from the 91-day maturity whilst LKR 60.0Bn and LKR 65.0Bn is expected to be raised from 182-day and 364-day maturities, respectively. Meanwhile, on the external front, LKR depreciated against the greenback for the second consecutive day, as CBSL published mid-rate was recorded at LKR 297.75/dollar. Moreover, face value of the CBSL owned securities portfolio declined slightly during the week in concern to LKR 2,655.6Bn from LKR 2,675.6Bn from the previous week.

UNIT TRUSTS

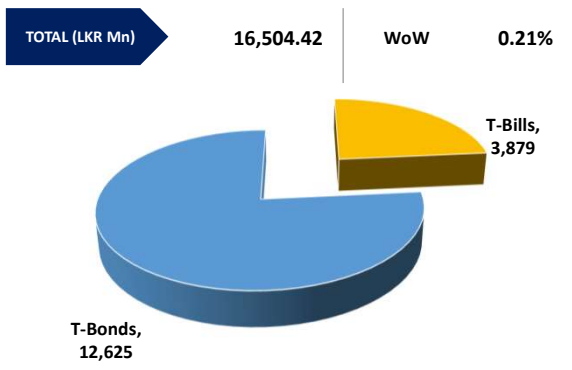
06-May-24

First Capital Unit Trust Funds			Sell Price	Buy Price	Avg. Yield
			LKR	LKR	
First Capital Money Market Fund	FCMMF		3,073.21	3,073.21	11.10%
First Capital Gilt Edge Fund	FCGEF		2,339.57	2,339.57	11.84%
First Capital Wealth Fund	FCWF		1,863.74	1,863.69	44.07%
First Capital Equity Fund	FCCEF		2,625.13	2,493.87	N/A

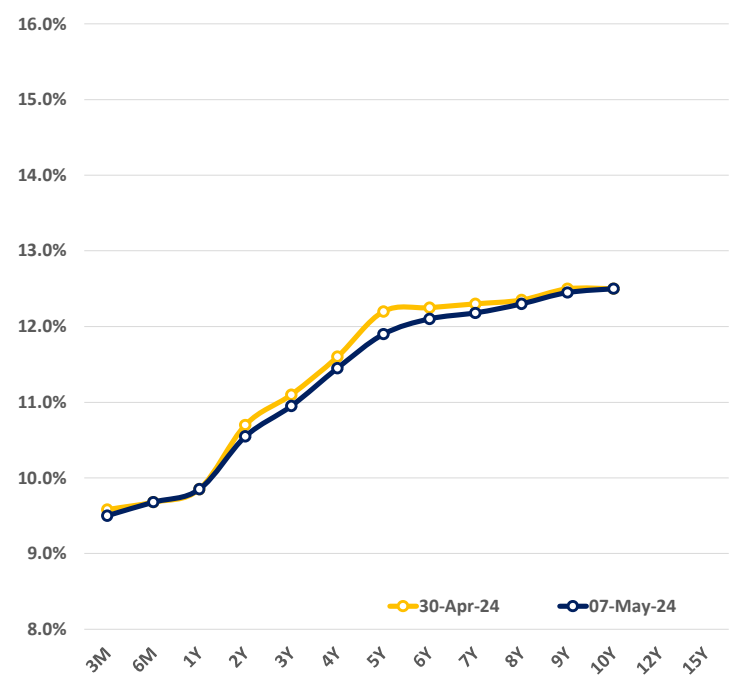
EXCESS LIQUIDITY AND CBSL HOLDINGS



OUTSTANDING STOCK [GSEC]

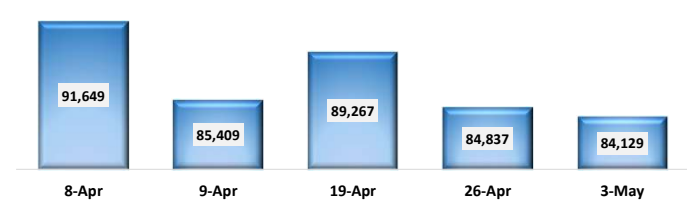


BILLS AND BONDS YIELDS

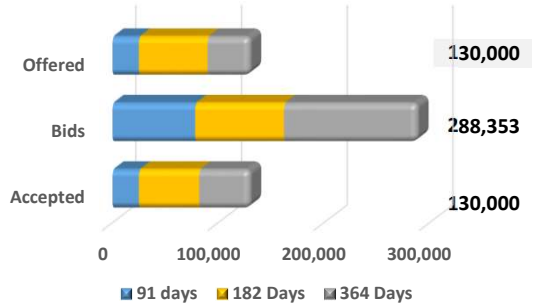


Tenure	Bid	Offer	Today	Last Week	Change (bps)
< 91 Days < 3M	9.60%	9.40%	9.50%	9.58%	-8
< 182 Days < 6M	9.75%	9.60%	9.68%	9.68%	0
< 364 Days < 1Y	9.90%	9.80%	9.85%	9.85%	0
01-Jun-26 < 2Y	10.60%	10.50%	10.55%	10.70%	-15
01-May-27 < 3Y	11.00%	10.90%	10.95%	11.10%	-15
15-Mar-28 < 4Y	11.50%	11.40%	11.45%	11.60%	-15
15-Jul-29 < 5Y	12.00%	11.80%	11.90%	12.20%	-30
15-May-30 < 6Y	12.15%	12.05%	12.10%	12.25%	-15
15-May-31 < 7Y	12.25%	12.10%	12.18%	12.30%	-12
01-Jul-32 < 8Y	12.35%	12.25%	12.30%	12.35%	-5
15-Jan-33 < 9Y	12.50%	12.40%	12.45%	12.50%	-5
01-Jan-34 < 10Y	12.60%	12.40%	12.50%	12.50%	0
15-Mar-35 < 12Y	N/A	N/A	N/A	N/A	N/A
15-Aug-39 < 15Y	N/A	N/A	N/A	N/A	N/A
01-Jan-41 < 20Y	N/A	N/A	N/A	N/A	N/A

FOREIGN HOLDING (LKR MN) WoW -0.83%



T-BILL AUCTION (LKR MN)



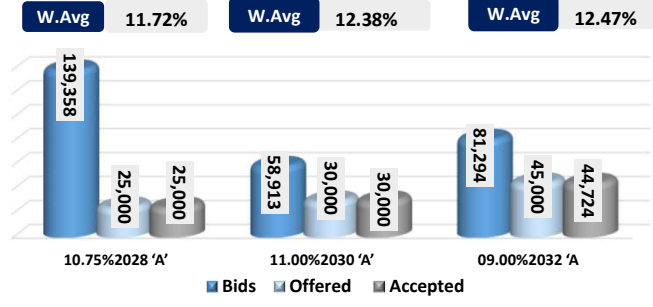
Auction Date: 30-Apr-24

Settlement Date: 3-May-24

91 days	9.61%	▼	-29 bps
184 days	9.89%	▼	-19 bps
364 days	9.99%	▼	-22 bps

T-BOND AUCTION (LKR MN)

Auction Date: 29-Apr-24



MATURITY TABLE (LKR MN)

Week ending: 10-May-24

