


First Capital
A Janashakthi Group Company

DAILY FIXED INCOME & UNIT TRUST



May 9, 2024

“Yields on a downtrend amidst sustained buying momentum”

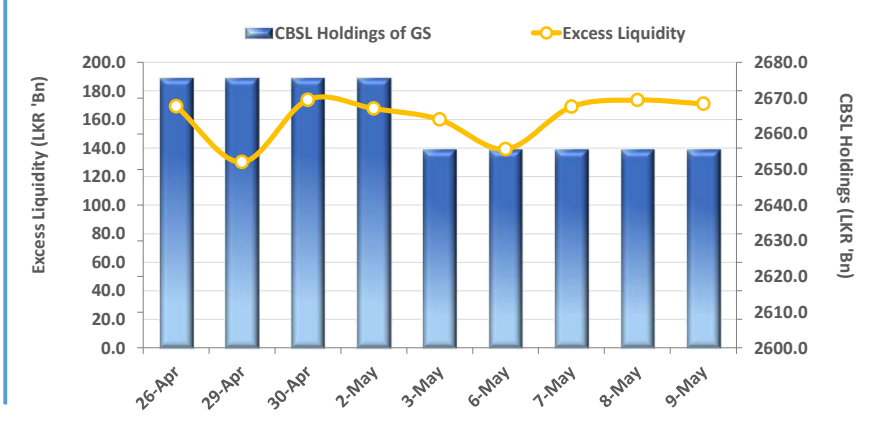
The secondary market yield curve budgeted slightly low on the belly, as bullish sentiment continued to dominate. Amidst moderate volumes, liquid maturities 2026, 2027 and 2028 experienced trades during the day. Accordingly, 15.12.2026, 15.01.2027 closed at 10.58% and 10.65%, respectively whilst 01.05.2027 and 15.09.2027 hovered between 11.00%-10.90%. On the 2028 tenor, 15.03.2028, 01.05.2028, 01.07.2028 and 15.12.2028 registered transactions in the range of 11.65%-11.35%. Meanwhile, 15.05.2030 recorded trades between 12.15%-12.10%. On the external side, LKR appreciated against the USD, closing at LKR 298.7 after 3 consecutive sessions of decline. Moreover, overnight liquidity closed positively at LKR 171.1Bn whilst CBSL Holdings remained stagnant.

UNIT TRUSTS

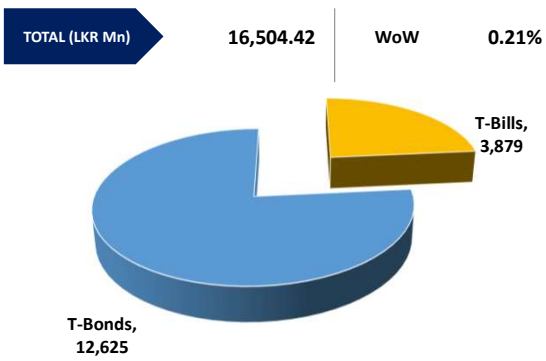
08-May-24

First Capital Unit Trust Funds		Sell Price	Buy Price	Avg. Yield
		LKR	LKR	
First Capital Money Market Fund	FCMMF	3,075.07	3,075.07	11.03%
First Capital Gilt Edge Fund	FCGEF	2,341.49	2,341.49	13.19%
First Capital Wealth Fund	FCWF	1,865.52	1,865.47	43.70%
First Capital Equity Fund	FCCEF	2,623.18	2,492.02	N/A
First Capital Money Plus Fund	FCMPF	1,004.60	1,004.60	6.91%

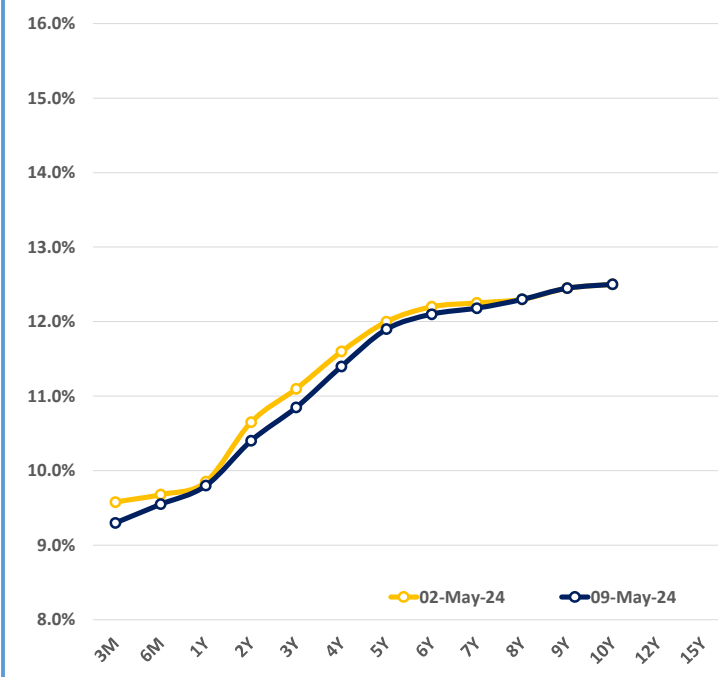
EXCESS LIQUIDITY AND CBSL HOLDINGS



OUTSTANDING STOCK [GSEC]

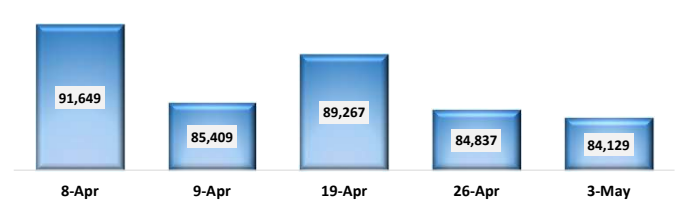


BILLS AND BONDS YIELDS

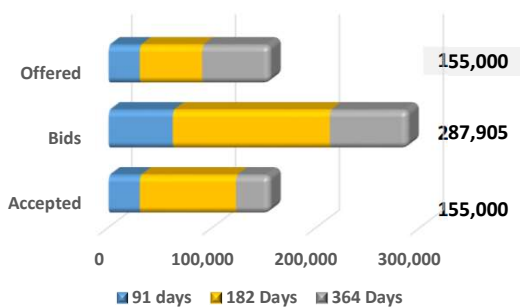


Tenure	Bid	Offer	Today	Last Week	Change (bps)
< 91 Days < 3M	9.40%	9.20%	9.30%	9.58%	-28
< 182 Days < 6M	9.65%	9.45%	9.55%	9.68%	-13
< 364 Days < 1Y	9.90%	9.70%	9.80%	9.85%	-5
01-Jun-26 < 2Y	10.50%	10.30%	10.40%	10.65%	-25
01-May-27 < 3Y	10.90%	10.80%	10.85%	11.10%	-25
01-May-28 < 4Y	11.45%	11.35%	11.40%	11.60%	-20
15-Jul-29 < 5Y	12.00%	11.80%	11.90%	12.00%	-10
15-May-30 < 6Y	12.15%	12.05%	12.10%	12.20%	-10
15-May-31 < 7Y	12.25%	12.10%	12.18%	12.25%	-7
01-Jul-32 < 8Y	12.35%	12.25%	12.30%	12.30%	0
15-Jan-33 < 9Y	12.50%	12.40%	12.45%	12.45%	0
01-Jan-34 < 10Y	12.60%	12.40%	12.50%	12.50%	0
15-Mar-35 < 12Y	N/A	N/A	N/A	N/A	N/A
15-Aug-39 < 15Y	N/A	N/A	N/A	N/A	N/A
01-Jan-41 < 20Y	N/A	N/A	N/A	N/A	N/A

FOREIGN HOLDING (LKR MN) WoW -0.83%



T-BILL AUCTION (LKR MN)

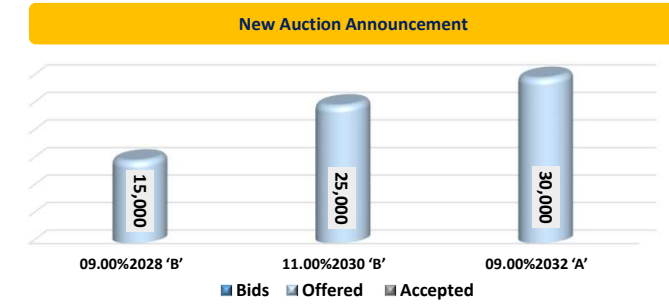


Auction Date: 8-May-24

Settlement Date: 10-May-24

91 days	9.43%	-18 bps
184 days	9.76%	-13 bps
364 days	9.90%	-9 bps

T-BOND AUCTION (LKR MN)



MATURITY TABLE (LKR MN)

