



First Capital
A Janashakthi Group Company

DAILY FIXED INCOME & UNIT TRUST



May 13, 2024

"Bond auction fully accepted as yields come down across all maturities"

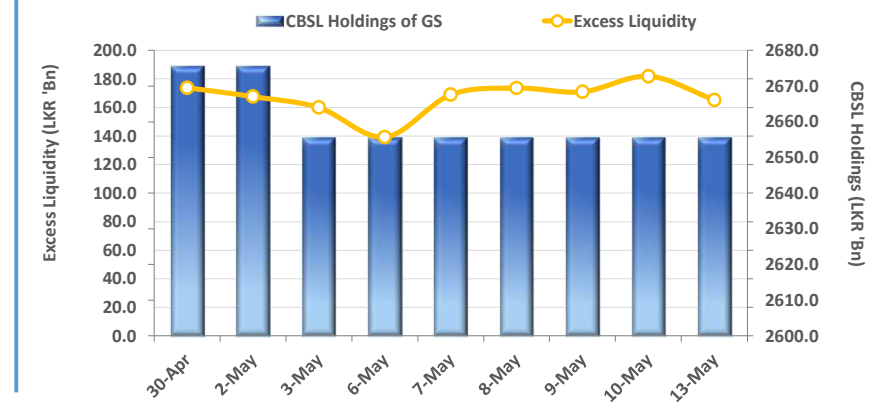
Prior to the bond auction scheduled today, the secondary market continued to see buying interest with activity centered across the belly-end of the curve. Thus, 15.05.26, 01.08.26, 15.12.26 maturities saw trades between 10.45%-10.25% whilst 15.09.27 recorded trades at 10.90%. Moreover, activities were also visible on 15.03.28, 01.05.28, 01.07.28 and 15.12.28 between 11.25%-11.15%. Meanwhile, CBSL conducted an LKR 70.0Bn bond auction and accepted total offered, with yields declining across all maturities. Therefore LKR 15.0Bn was accepted from the 01.05.28 maturity at 11.01%, whilst LKR 25.0Bn and LKR 30.0Bn was raised from the 15.10.30 and 01.10.32 maturities at 11.85% and 12.17%, respectively. Post bond auction, positive buying sentiment continued after yields came down at the auction with 01.08.26, 15.12.26 maturities trading at 10.15%-10.12% whilst 15.03.28, 01.05.28, 01.07.28 and 15.12.28 maturities traded between 11.00%-10.90%. Moreover, several activities were observed on 15.05.30 maturity between 11.75%-11.60% whilst 01.10.32 maturity recorded trades at 12.00%. Meanwhile, on the external front, LKR depreciated against the greenback as mid-rate published by CBSL stood at LKR 298.79/dollar.

UNIT TRUSTS

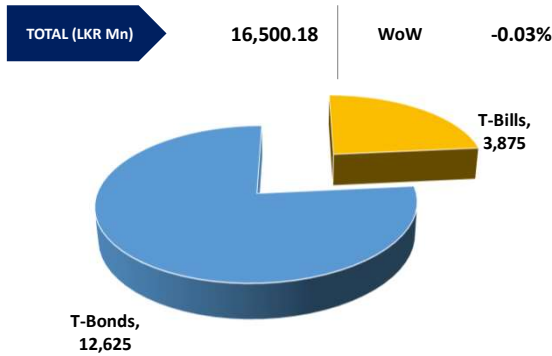
12-May-24

First Capital Unit Trust Funds		Sell Price	Buy Price	Avg. Yield
		LKR	LKR	
First Capital Money Market Fund	FCMMF	3,078.79	3,078.79	11.05%
First Capital Gilt Edge Fund	FCGEF	2,343.97	2,343.97	10.70%
First Capital Wealth Fund	FCWF	1,867.68	1,867.63	42.75%
First Capital Equity Fund	FCCEF	2,647.05	2,514.70	N/A
First Capital Money Plus Fund	FCMPF	1,005.40	1,005.40	7.01%

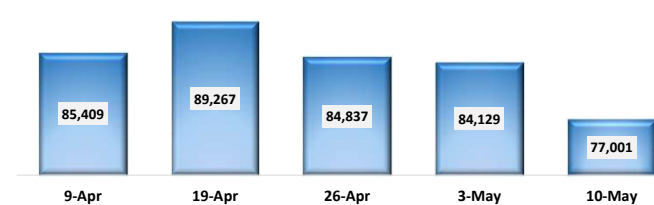
EXCESS LIQUIDITY AND CBSL HOLDINGS



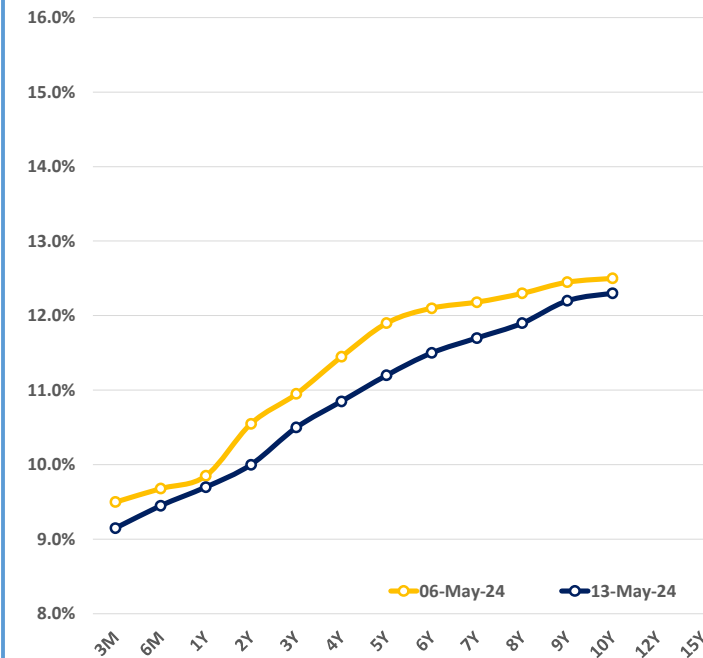
OUTSTANDING STOCK [GSEC]



FOREIGN HOLDING (LKR MN)

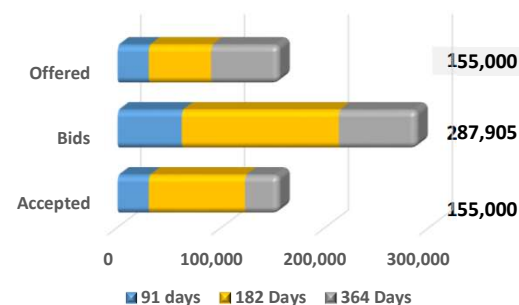


BILLS AND BONDS YIELDS



Tenure	Bid	Offer	Today	Last Week	Change (bps)
< 91 Days < 3M	9.30%	9.00%	9.15%	9.50%	-35
< 182 Days < 6M	9.60%	9.30%	9.45%	9.68%	-23
< 364 Days < 1Y	9.80%	9.60%	9.70%	9.85%	-15
01-Jun-26 < 2Y	10.10%	9.90%	10.00%	10.55%	-55
01-May-27 < 3Y	10.55%	10.45%	10.50%	10.95%	-45
01-May-28 < 4Y	10.90%	10.80%	10.85%	11.45%	-60
15-Jul-29 < 5Y	11.40%	11.00%	11.20%	11.90%	-70
15-May-30 < 6Y	11.60%	11.40%	11.50%	12.10%	-60
15-May-31 < 7Y	11.80%	11.60%	11.70%	12.18%	-48
01-Jul-32 < 8Y	12.00%	11.80%	11.90%	12.30%	-40
15-Jan-33 < 9Y	12.30%	12.10%	12.20%	12.45%	-25
01-Jan-34 < 10Y	12.40%	12.20%	12.30%	12.50%	-20
15-Mar-35 < 12Y	N/A	N/A	N/A	N/A	N/A
15-Aug-39 < 15Y	N/A	N/A	N/A	N/A	N/A
01-Jan-41 < 20Y	N/A	N/A	N/A	N/A	N/A

T-BILL AUCTION (LKR MN)



Auction Date: 8-May-24

Settlement Date: 10-May-24

91 days	9.43%	▼	-18 bps
184 days	9.76%	▼	-13 bps
364 days	9.90%	▼	-9 bps

T-BOND AUCTION (LKR MN)

Auction Date: 13-May-24



MATURITY TABLE (LKR MN)

Week ending: 17-May-24

