


First Capital
A Janashakthi Group Company

DAILY FIXED INCOME & UNIT TRUST



May 14, 2024

"Bullish sentiment further drives down bond yields"

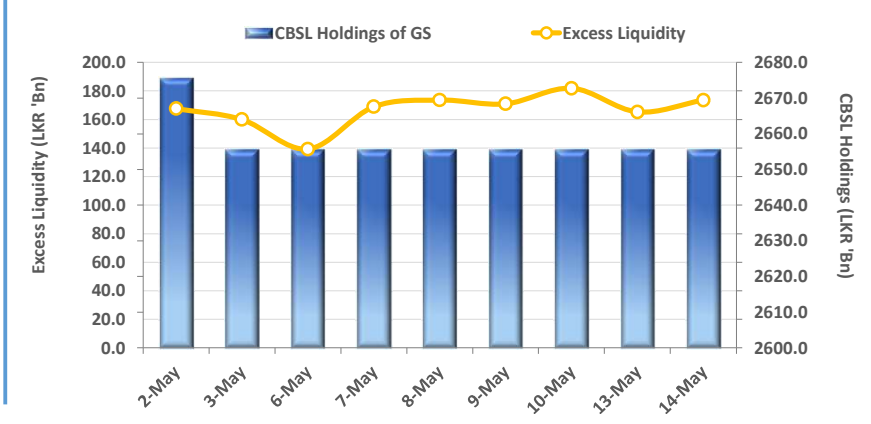
The secondary market yield curve further declined as bullish sentiment continued to drive heavy buying momentum in the secondary market. Investor interest enticed across the board, with 2026 tenors trading within the range of 10.15% to 10.00%. Meanwhile, yields of 01.05.27, 15.09.27, 15.03.28, 01.05.28, and 01.07.28 traded at the lowest at 10.20%, 10.25%, 10.60%, 10.65%, and 10.66% respectively. Meanwhile, on the long end of the curve, yields further decreased to 11.50% and 11.80% for the 15.05.30 and 01.10.32 maturities. Moreover, CBSL announced an issue of LKR 177.5Bn T-Bills through an auction to be held on 15th May 2024, out of which LKR 45.0Bn is to be raised from 91-day maturity, LKR 77.5Bn is expected to be raised from 182-day maturity while LKR 55.0Bn is to be raised from 364-day maturity. On the external side, LKR slightly depreciated against the greenback and recorded at LKR 299.90/USD.

UNIT TRUSTS

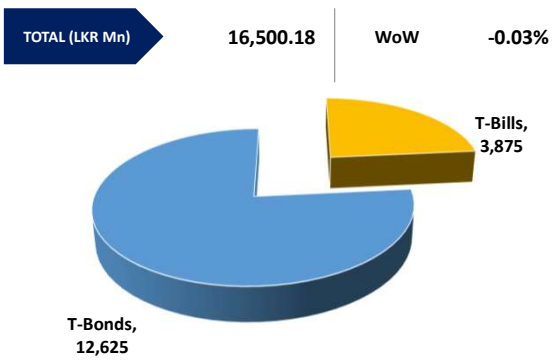
13-May-24

First Capital Unit Trust Funds		Sell Price	Buy Price	Avg. Yield
		LKR	LKR	
First Capital Money Market Fund	FCMMF	3,079.72	3,079.72	11.05%
First Capital Gilt Edge Fund	FCGEF	2,344.58	2,344.58	11.17%
First Capital Wealth Fund	FCWF	1,869.39	1,869.34	42.72%
First Capital Equity Fund	FCCEF	2,643.48	2,511.31	N/A
First Capital Money Plus Fund	FCMPF	1,005.59	1,005.59	7.06%

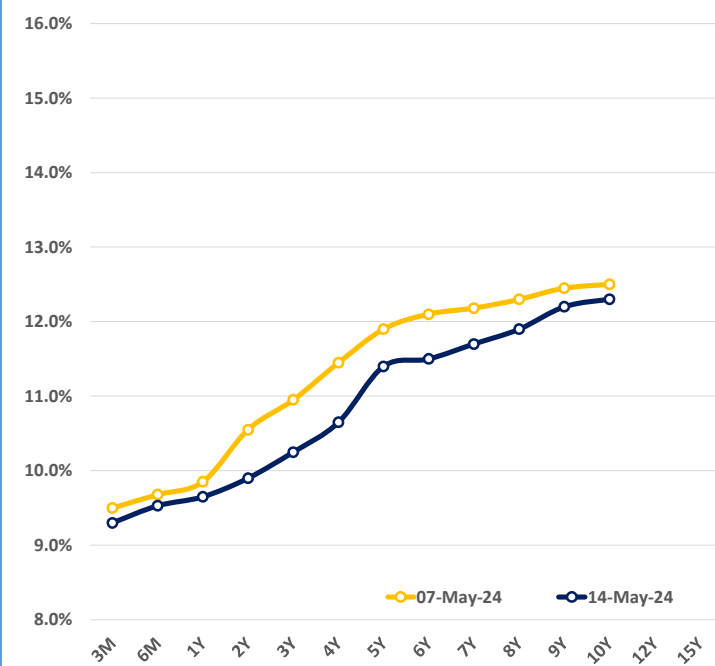
EXCESS LIQUIDITY AND CBSL HOLDINGS



OUTSTANDING STOCK [GSEC]

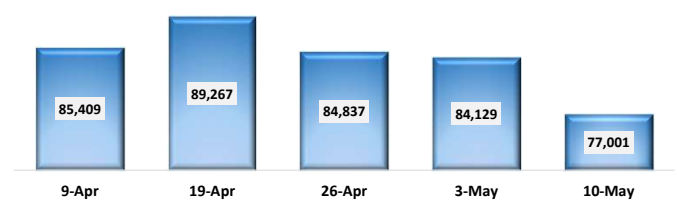


BILLS AND BONDS YIELDS

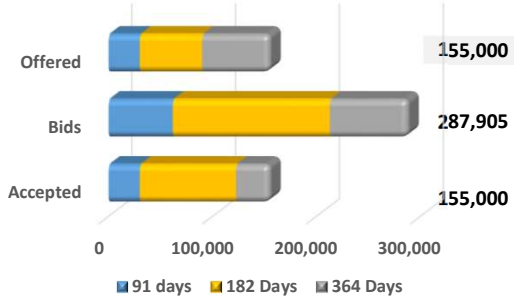


Tenure	Bid	Offer	Today	Last Week	Change (bps)
< 91 Days < 3M	9.40%	9.20%	9.30%	9.50%	-20
< 182 Days < 6M	9.60%	9.45%	9.53%	9.68%	-15
< 364 Days < 1Y	9.80%	9.50%	9.65%	9.85%	-20
01-Jun-26 < 2Y	10.00%	9.80%	9.90%	10.55%	-65
01-May-27 < 3Y	10.30%	10.20%	10.25%	10.95%	-70
01-May-28 < 4Y	10.70%	10.60%	10.65%	11.45%	-80
15-Jul-29 < 5Y	11.50%	11.30%	11.40%	11.90%	-50
15-May-30 < 6Y	11.55%	11.45%	11.50%	12.10%	-60
15-May-31 < 7Y	11.80%	11.60%	11.70%	12.18%	-48
01-Jul-32 < 8Y	12.00%	11.80%	11.90%	12.30%	-40
15-Jan-33 < 9Y	12.30%	12.10%	12.20%	12.45%	-25
01-Jan-34 < 10Y	12.40%	12.20%	12.30%	12.50%	-20
15-Mar-35 < 12Y	N/A	N/A	N/A	N/A	N/A
15-Aug-39 < 15Y	N/A	N/A	N/A	N/A	N/A
01-Jan-41 < 20Y	N/A	N/A	N/A	N/A	N/A

FOREIGN HOLDING (LKR MN) WoW -8.47%



T-BILL AUCTION (LKR MN)



Auction Date: 8-May-24

Settlement Date: 10-May-24

91 days	9.43%	▼	-18 bps
184 days	9.76%	▼	-13 bps
364 days	9.90%	▼	-9 bps

T-BOND AUCTION (LKR MN) Auction Date: 13-May-24



MATURITY TABLE (LKR MN) Week ending: 17-May-24

