


First Capital
A Janashakthi Group Company

DAILY FIXED INCOME & UNIT TRUST



May 15, 2024

"Auction yields taper down across the board"

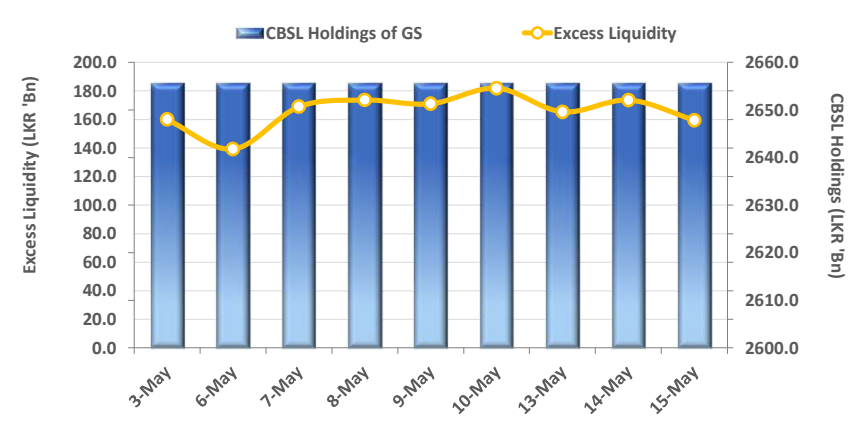
CBSL conducted its weekly T-Bill auction where weighted average yields declined across the board for the 6th consecutive week. The total offered amount of LKR 177.5Bn was fully accepted with 1Yr bill being oversubscribed amidst higher reception. Accordingly, weighted average yield rates declined by over 30bps across all maturities with 03M closing at 9.04% (-39bps), whilst 06M and 1Yr bills closing at 9.43% (-33bps) and 9.57% (-33bps), respectively. In the secondary market, during early trading hours buying interest activated on 15.05.2030 maturity which traded at 11.50%. Moreover, on the short end, 15.12.2026 traded between 10.00%-9.93% whilst 01.05.2027 and 15.09.2027 traded within a range of 10.25%-10.20% as buying sentiment progressed. However, post auction, investor interest slightly reversed with a perceptible mixed sentiment. Accordingly, on the 2028 tenor, 15.03.2028, 01.05.2028, 01.07.2028 and 15.12.2028 hovered in a range between 10.50%-10.65%. Moreover, 01.10.2032 closed trades for the day between 11.80%-11.85%. On the external market, rupee depreciated against the USD for the third consecutive day closing at LKR 300.8.

UNIT TRUSTS

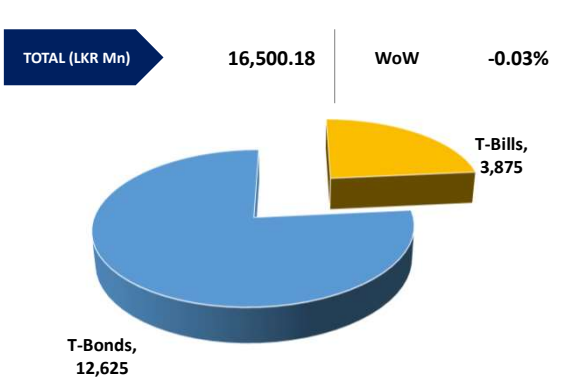
14-May-24

First Capital Unit Trust Funds			Sell Price	Buy Price	Avg. Yield
			LKR	LKR	
First Capital Money Market Fund	FCMMF		3,080.65	3,080.65	11.04%
First Capital Gilt Edge Fund	FCGEF		2,345.48	2,345.48	10.36%
First Capital Wealth Fund	FCWF		1,872.93	1,872.88	43.00%
First Capital Equity Fund	FCEF		2,622.13	2,491.02	14.81%
First Capital Money Plus Fund	FCMPF		1,005.77	1,005.77	7.06%

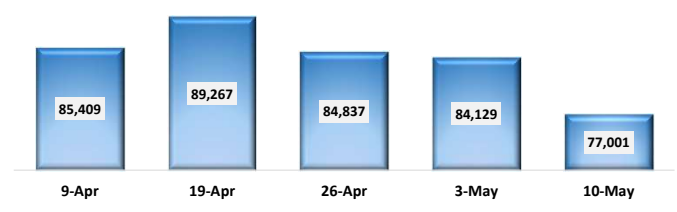
EXCESS LIQUIDITY AND CBSL HOLDINGS



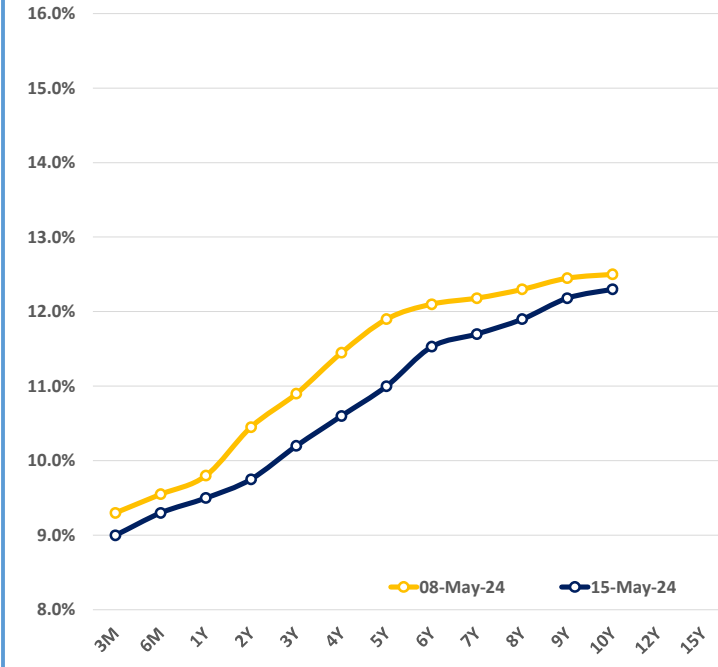
OUTSTANDING STOCK [GSEC]



FOREIGN HOLDING (LKR MN) - WoW -8.47%

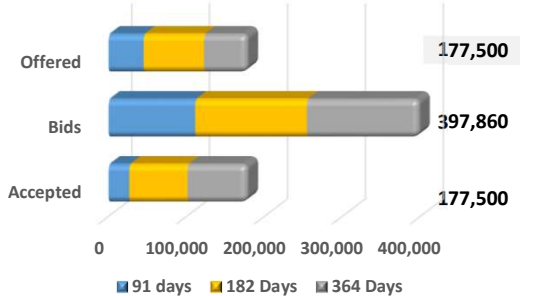


BILLS AND BONDS YIELDS



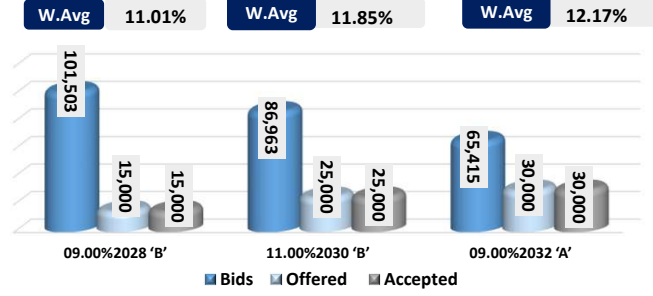
Tenure	Bid	Offer	Today	Last Week	Change (bps)
< 91 Days < 3M	9.10%	8.90%	9.00%	9.30%	-30
< 182 Days < 6M	9.40%	9.20%	9.30%	9.55%	-25
< 364 Days < 1Y	9.60%	9.40%	9.50%	9.80%	-30
01-Jun-26 < 2Y	9.85%	9.65%	9.75%	10.45%	-70
01-May-27 < 3Y	10.25%	10.15%	10.20%	10.90%	-70
01-May-28 < 4Y	10.65%	10.55%	10.60%	11.45%	-85
15-Jul-29 < 5Y	11.10%	10.90%	11.00%	11.90%	-90
15-May-30 < 6Y	11.60%	11.45%	11.53%	12.10%	-57
15-May-31 < 7Y	11.80%	11.60%	11.70%	12.18%	-48
01-Jul-32 < 8Y	12.00%	11.80%	11.90%	12.30%	-40
15-Jan-33 < 9Y	12.25%	12.10%	12.18%	12.45%	-27
01-Jan-34 < 10Y	12.40%	12.20%	12.30%	12.50%	-20
15-Mar-35 < 12Y	N/A	N/A	N/A	N/A	N/A
15-Aug-39 < 15Y	N/A	N/A	N/A	N/A	N/A
01-Jan-41 < 20Y	N/A	N/A	N/A	N/A	N/A

T-BILL AUCTION (LKR MN)



Auction Date	15-May-24
Settlement Date	17-May-24
91 days	9.04% ▼ -39 bps
184 days	9.43% ▼ -33 bps
364 days	9.57% ▼ -33 bps

T-BOND AUCTION (LKR MN)



MATURITY TABLE (LKR MN)

