



May 29, 2024

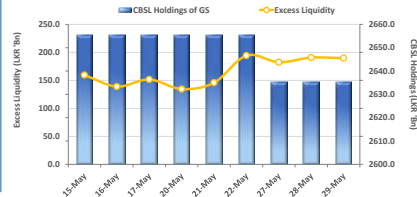
**"Auction yields continue to decline for the 8th consecutive week"**

The secondary market witnessed buying sentiment throughout the day, largely centered on the shorter and the belly end of the curve. Thus, trades were observed on the 2026 maturity, with 15.05.26, 01.06.26, 01.08.26 and 15.12.26 trading between 9.93%-9.70%. Furthermore, a steep decline in yields was also observed at the LKR 160.0Bn Treasury bill auction held today, with yields dropping by more than 10bps across the board and continue to hover below the 10% mark. The LKR 160.0Bn auction conducted today was fully subscribed with CBSL raising LKR 30.0Bn from the 3M bill at 8.62% (-14bpsWoW), LKR 50.0Bn from the 6M bill at 9.04% (-13bpsWoW) and raising LKR 80.0Bn from the 364-day bill at 9.18% (-11bpsWoW). Meanwhile, post auction selective interest was visible on the tail end of the curve, with 15.09.27 trading between 10.55%-10.35% whilst 2028 maturities including 15.03.28, 01.05.28 and 01.07.28 maturities trading between 10.90%-10.70%. Furthermore, few trades were also noticed on the 01.10.32 maturity, trading at 11.85%. Meanwhile, on the external front, LKR continued to remain volatile and depreciated for the fourth straight session and recorded at LKR 301.27/dollar.

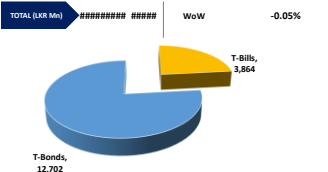
**UNIT TRUSTS**

First Capital Unit Trust Funds		Sell Price	Buy Price	Avg. Yield
		LKR	LKR	
First Capital Money Market Fund	FCMMF	3,093.54	3,093.54	10.88%
First Capital Gilt Edge Fund	FCGEF	2,356.45	2,356.45	10.73%
First Capital Wealth Fund	FCWF	1,895.00	1,894.95	42.30%
First Capital Equity Fund	FCEF	2,593.65	2,463.97	13.56%
First Capital Money Plus Fund	FCMPF	1,008.53	1,008.53	7.25%

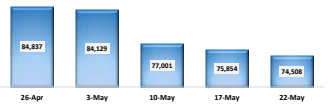
**EXCESS LIQUIDITY AND CBSL HOLDINGS**



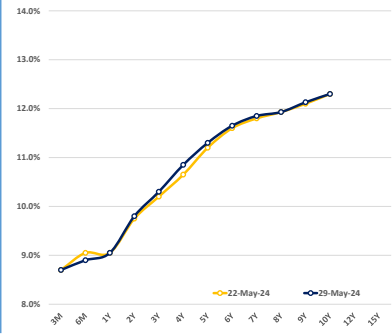
**OUTSTANDING STOCK [GSEC]**



**FOREIGN HOLDING (LKR MN)**

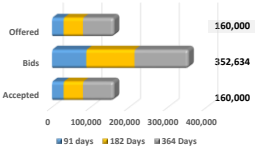


**BILLS AND BONDS YIELDS**

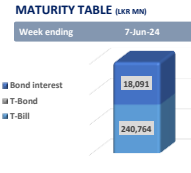
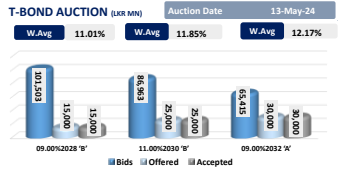


Tenure	Bid	Offer	Today	Last Week	Change (bps)
< 91 Days < 3M	8.65%	8.55%	8.70%	8.70%	0
< 182 Days < 6M	9.00%	8.80%	8.90%	9.05%	-15
< 364 Days < 1Y	9.10%	9.00%	9.05%	9.05%	0
01-Jun-26 < 2Y	9.80%	9.70%	9.80%	9.75%	+5
01-May-27 < 3Y	10.30%	10.20%	10.30%	10.20%	+10
01-May-28 < 4Y	10.75%	10.65%	10.85%	10.65%	+20
15-Jul-29 < 5Y	11.25%	11.00%	11.30%	11.20%	+10
15-May-30 < 6Y	11.70%	11.60%	11.65%	11.60%	+5
15-May-31 < 7Y	11.85%	11.70%	11.85%	11.80%	+5
01-Jul-32 < 8Y	11.90%	11.80%	11.93%	11.93%	0
15-Jan-33 < 9Y	12.20%	11.90%	12.13%	12.10%	+3
01-Jan-34 < 10Y	12.20%	11.90%	12.30%	12.30%	0
15-Mar-35 < 12Y	N/A	N/A	N/A	N/A	N/A
15-Aug-39 < 15Y	N/A	N/A	N/A	N/A	N/A
01-Jan-41 < 20Y	N/A	N/A	N/A	N/A	N/A

**T-BILL AUCTION (LKR MN)**



Auction Date	29-May-24
Settlement Date	31-May-24
91 days	8.62% ▼ -14 bps
184 days	9.04% ▼ -13 bps
364 days	9.18% ▼ -11 bps



**New Auction Announcement**

W.Avg 14.22%

Rejected

Rejected