


First Capital
A Janashakthi Group Company

DAILY FIXED INCOME & UNIT TRUST



April 30, 2024

"Bill auction yields plunge below 10.0% mark across the board"

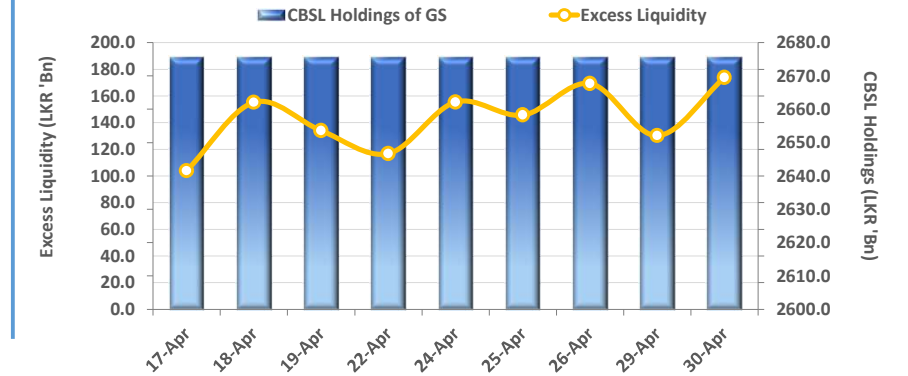
Bullish sentiment persisted in the secondary market for the 4th consecutive day, following the auction yields sharply declining in both T-Bond and T-Bill auctions. Short to mid tenors witnessed significant buying interest and high volumes. Liquid tenors 2026 maturities including 15.05.26, 01.06.26, and 15.12.26 traded in the range of 11.00%-10.80%, while 2027 maturities 01.05.27 and 15.09.27 ranged between 11.25%-11.05%. Notable transactions occurred on 2028 tenors such as 15.03.28 and 01.05.28 which traded lowest at 11.60% and 11.65%, respectively, while 15.12.28 traded between 11.75%-11.70%. Moreover, bond auction maturities, 15.05.30 and 01.10.32 saw yields dip, trading at 12.25%-12.20% and 12.40%-12.35%, respectively. Meanwhile, at the T-Bill auction, the Weighted Average Yield Rate (WAYR) across all tenors dropped below the 10.0% mark, with the total offered amount of LKR 130.0Bn fully accepted. 3M bill got fully accepted at a WAYR of 9.61% (-29bps), while LKR 47.9Bn was accepted for the 1Yr bill compared to the offered LKR 40.0Bn at a WAYR of 9.99% (-22bps). Notably, 6M bill was undersubscribed at the auction at a WAYR of 9.89% (-19bps). In the forex market, LKR depreciated against the greenback after 4-days and closed at LKR 296.9.

UNIT TRUSTS

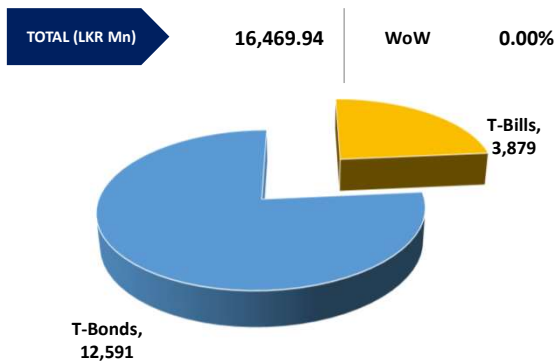
29-Apr-24

First Capital Unit Trust Funds			Sell Price	Buy Price	Avg. Yield
			LKR	LKR	
First Capital Money Market Fund	FCMMF		3,066.68	3,066.68	11.67%
First Capital Gilt Edge Fund	FCGEF		2,334.27	2,334.27	10.12%
First Capital Wealth Fund	FCWF		1,844.58	1,844.53	43.04%
First Capital Equity Fund	FCCEF		2,624.67	2,493.44	N/A

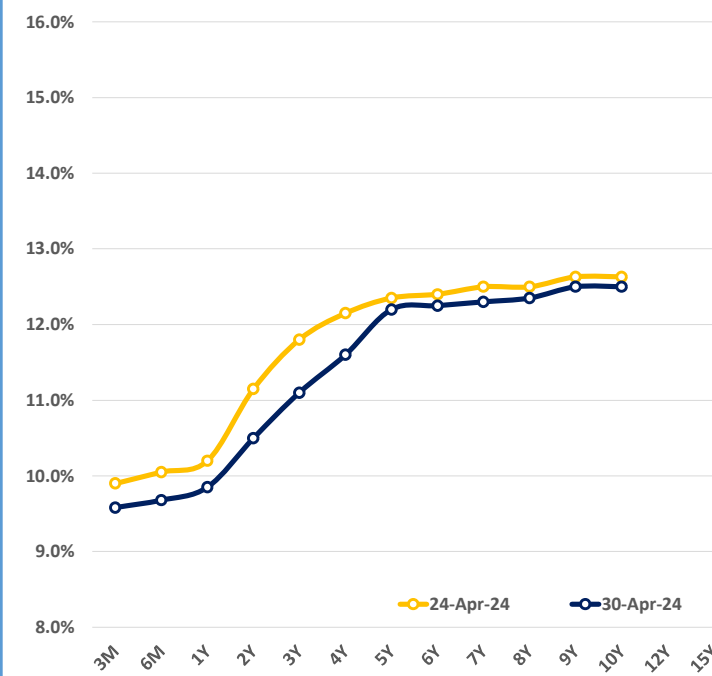
EXCESS LIQUIDITY AND CBSL HOLDINGS



OUTSTANDING STOCK [GSEC]

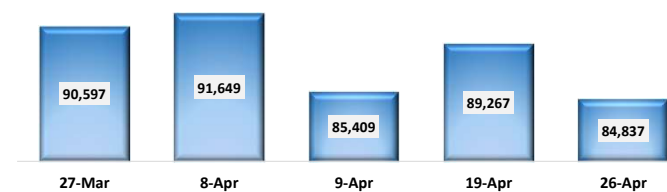


BILLS AND BONDS YIELDS

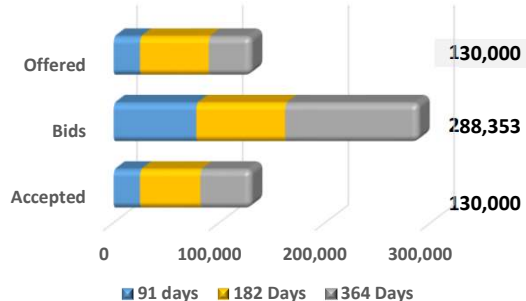


Tenure	Bid	Offer	Today	Last Week	Change (bps)
< 91 Days < 3M	9.65%	9.50%	9.58%	9.90%	-32
< 182 Days < 6M	9.75%	9.60%	9.68%	10.05%	-37
< 364 Days < 1Y	9.90%	9.80%	9.85%	10.20%	-35
01-Jun-26 < 2Y	10.60%	10.40%	10.50%	11.15%	-65
01-May-27 < 3Y	11.15%	11.05%	11.10%	11.80%	-70
15-Mar-28 < 4Y	11.65%	11.55%	11.60%	12.15%	-55
15-Jul-29 < 5Y	12.25%	12.15%	12.20%	12.35%	-15
15-May-30 < 6Y	12.30%	12.20%	12.25%	12.40%	-15
15-May-31 < 7Y	12.35%	12.25%	12.30%	12.50%	-20
01-Jul-32 < 8Y	12.40%	12.30%	12.35%	12.50%	-15
15-Jan-33 < 9Y	12.60%	12.40%	12.50%	12.63%	-13
01-Jan-34 < 10Y	12.60%	12.40%	12.50%	12.63%	-13
15-Mar-35 < 12Y	N/A	N/A	N/A	N/A	N/A
15-Aug-39 < 15Y	N/A	N/A	N/A	N/A	N/A
01-Jan-41 < 20Y	N/A	N/A	N/A	N/A	N/A

FOREIGN HOLDING (LKR MN)



T-BILL AUCTION (LKR MN)



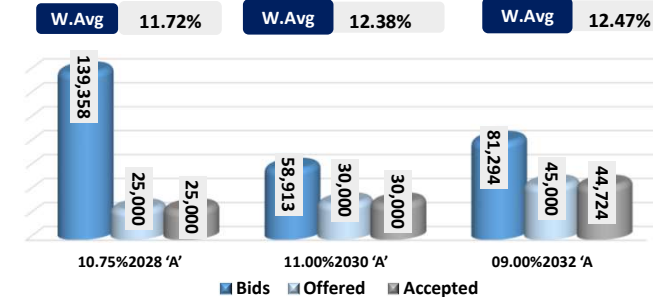
Auction Date: 30-Apr-24

Settlement Date: 3-May-24

91 days	9.61%	▼	-29 bps
184 days	9.89%	▼	-19 bps
364 days	9.99%	▼	-22 bps

T-BOND AUCTION (LKR MN)

Auction Date: 29-Apr-24



MATURITY TABLE (LKR MN)

Week ending: 10-May-24

