

June 24, 2024

*"The market commence on a stand still"*

The secondary market commenced the week on a stand still as investors opted into a wait and see approach longing for more clarity on the market sentiment. Low activity and very limited trades were recorded during the day justifying the lethargic stance in the market. AWPR was recorded at 9.09% for the week ending 20th June 2024 registering a decline of 6bps compared to the previous week yet attaining to remain below the 10.0% mark. Foreign holdings deteriorated by LKR 2.2Bn compared to last week recording at LKR 68.5Bn for the week ending 19th June 2024. LKR slightly depreciated against the USD recording at LKR 305.4 during the day.

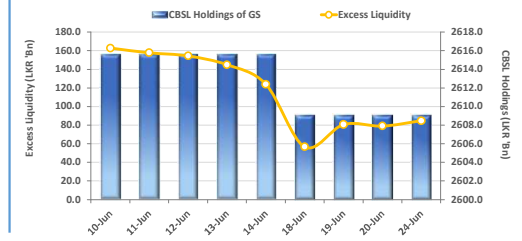


UNIT TRUSTS

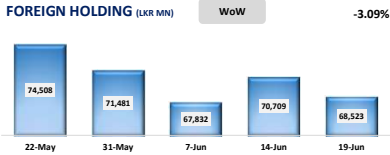
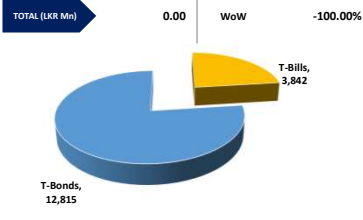
23-Jun-24

First Capital Unit Trust Funds		Sell Price	Buy Price	Avg. Yield
		LKR	LKR	
First Capital Money Market Fund	FCMMF	3,116.91	3,116.91	10.53%
First Capital Gilt Edge Fund	FCGEF	2,367.02	2,367.02	3.92%
First Capital Wealth Fund	FCWF	1,896.17	1,896.12	36.17%
First Capital Equity Fund	FCEF	2,623.66	2,584.31	14.87%
First Capital Money Plus Fund	FCMPF	1,013.47	1,013.47	7.16%

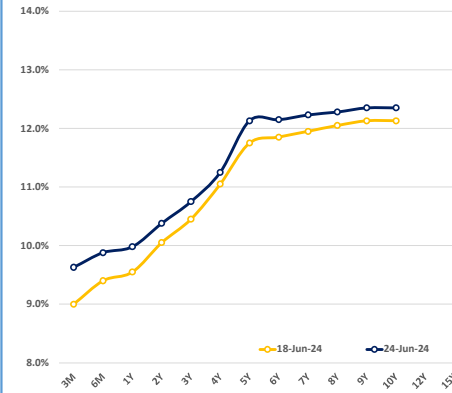
EXCESS LIQUIDITY AND CBSL HOLDINGS



OUTSTANDING STOCK [GSEC]

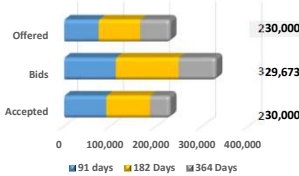


BILLS AND BONDS YIELDS



Tenure	Bid	Offer	Today	Last Week	Change (bps)
< 91 Days < 3M	9.75%	9.50%	9.63%	9.00%	+63
< 182 Days < 6M	10.00%	9.75%	9.88%	9.40%	+48
< 364 Days < 1Y	10.10%	9.85%	9.98%	9.55%	+43
01-Jun-26 < 2Y	10.50%	10.25%	10.38%	10.05%	+33
01-May-27 < 3Y	10.90%	10.60%	10.75%	10.45%	+30
01-May-28 < 4Y	11.40%	11.10%	11.25%	11.05%	+20
15-Jul-29 < 5Y	12.25%	12.00%	12.13%	11.75%	+38
15-May-30 < 6Y	12.30%	12.00%	12.15%	11.85%	+30
15-May-31 < 7Y	12.35%	12.10%	12.23%	11.95%	+28
01-Jul-32 < 8Y	12.40%	12.15%	12.28%	12.05%	+23
15-Jan-33 < 9Y	12.50%	12.20%	12.35%	12.13%	+22
01-Jan-34 < 10Y	12.50%	12.20%	12.35%	12.13%	+22
15-Mar-35 < 12Y	N/A	N/A	N/A	N/A	N/A
15-Aug-39 < 15Y	N/A	N/A	N/A	N/A	N/A
01-Jan-41 < 20Y	N/A	N/A	N/A	N/A	N/A

T-BILL AUCTION (LKR MN)



Auction Date: 19-Jun-24

Settlement Date: 24-Jun-24

91 days	9.39%	▲	+50 bps
184 days	9.81%	▲	+51 bps
364 days	9.90%	▲	+36 bps

T-BOND AUCTION (LKR MN)



Auction Date: 13-Jun-24

MATURITY TABLE (LKR MN)

Week ending: 28-Jun-24

