



DAILY FIXED INCOME & UNIT TRUST

June 25, 2024

"Secondary market's quiet streak continues"

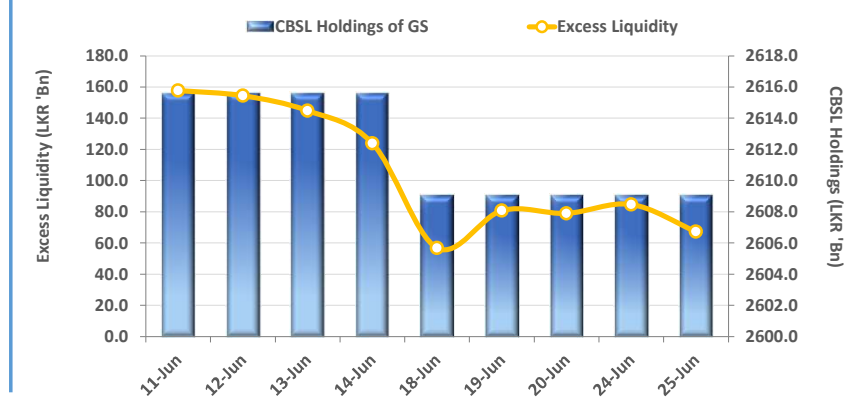
The secondary market stayed muted during the day, mirroring yesterday's subdued trend as investors held back, seeking more clarity on the market sentiment. Consequently, the overall activity remained limited, with trading volumes notably thin throughout the day. Among the few notable trades, there were some mixed activities witnessed on the 15.09.29 maturity, with transactions occurring within a narrow range of 12.10%-12.15%, whilst the 15.12.31 maturity traded at 12.15%. CBSL has announced the issuance of LKR 75.0Bn in T-bonds through an auction scheduled on the 27th of June 2024. This issuance includes LKR 50.0Bn under the 15.02.28 maturity and LKR 25.0Bn under the 01.06.33 maturity. Additionally, the latest data from the Department of Census and Statistics indicates a significant decrease in the overall rate of inflation, as measured by the National Consumer Price Index (NCPI). In May 2024, the NCPI declined to 1.6%YoY, showing a decrease from 2.7%YoY recorded in April 2024. Moreover, overnight liquidity for the day was recorded at LKR 67.3Bn, while CBSL holdings remained steady at LKR 2,609.1Bn. On the external front, the LKR appreciated against the USD, closing at LKR 305.3 during the day.

UNIT TRUSTS

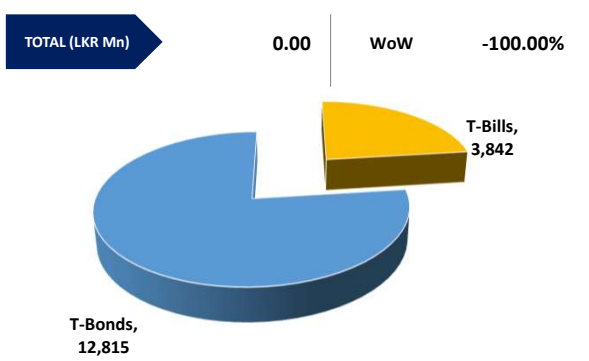
25-Jun-24

First Capital Unit Trust Funds		Sell Price	Buy Price	Avg. Yield
		LKR	LKR	
First Capital Money Market Fund	FCMMF	3,117.90	3,117.90	10.69%
First Capital Gilt Edge Fund	FCGEF	2,367.44	2,367.44	3.70%
First Capital Wealth Fund	FCWF	1,896.58	1,896.53	36.02%
First Capital Equity Fund	FCEF	2,635.40	2,595.87	15.39%
First Capital Money Plus Fund	FCMPF	1,013.66	1,013.66	7.11%

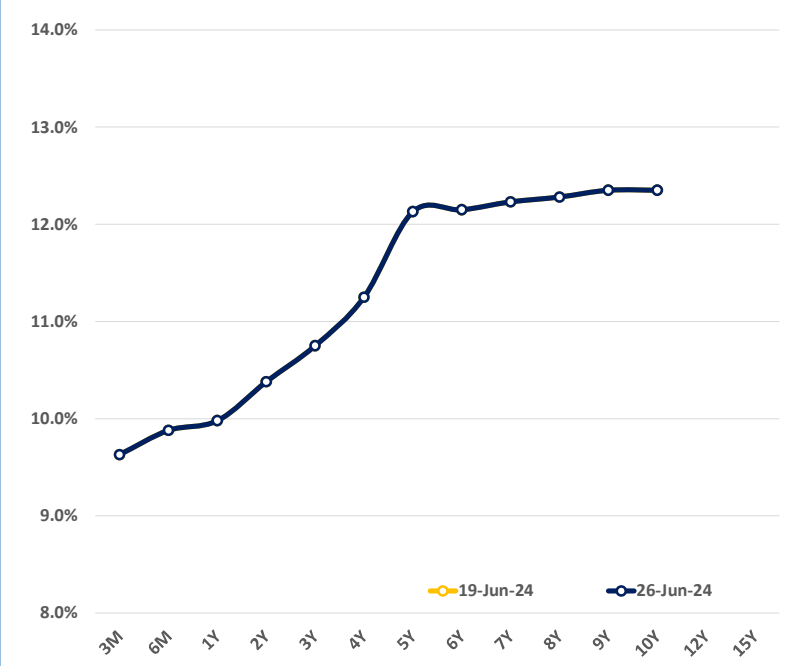
EXCESS LIQUIDITY AND CBSL HOLDINGS



OUTSTANDING STOCK [GSEC]

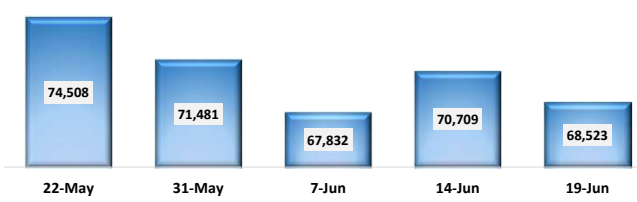


BILLS AND BONDS YIELDS

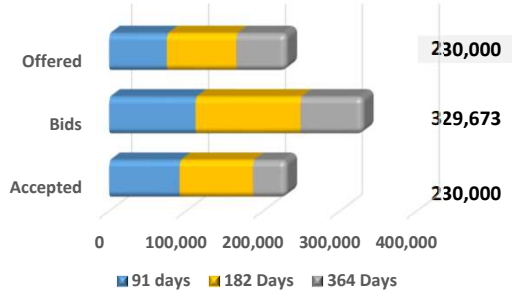


Tenure	Bid	Offer	Today	Last Week	Change (bps)
< 91 Days < 3M	9.75%	9.50%	9.63%	9.63%	0
< 182 Days < 6M	10.00%	9.75%	9.88%	9.88%	0
< 364 Days < 1Y	10.10%	9.85%	9.98%	9.98%	0
01-Jun-26 < 2Y	10.50%	10.25%	10.38%	10.38%	0
01-May-27 < 3Y	10.90%	10.60%	10.75%	10.75%	0
01-May-28 < 4Y	11.40%	11.10%	11.25%	11.25%	0
15-Jul-29 < 5Y	12.25%	12.00%	12.13%	12.13%	0
15-May-30 < 6Y	12.30%	12.00%	12.15%	12.15%	0
15-May-31 < 7Y	12.35%	12.10%	12.23%	12.23%	0
01-Jul-32 < 8Y	12.40%	12.15%	12.28%	12.28%	0
15-Jan-33 < 9Y	12.50%	12.20%	12.35%	12.35%	0
01-Jan-34 < 10Y	12.50%	12.20%	12.35%	12.35%	0
15-Mar-35 < 12Y	N/A	N/A	N/A	N/A	N/A
15-Aug-39 < 15Y	N/A	N/A	N/A	N/A	N/A
01-Jan-41 < 20Y	N/A	N/A	N/A	N/A	N/A

FOREIGN HOLDING (LKR MN)



T-BILL AUCTION (LKR MN)



T-BOND AUCTION (LKR MN)

Auction Date	19-Jun-24
Settlement Date	24-Jun-24
91 days	9.39% ▲ +50 bps
184 days	9.81% ▲ +51 bps
364 days	9.90% ▲ +36 bps

T-BOND AUCTION (LKR MN)



MATURITY TABLE (LKR MN)

