



DAILY FIXED INCOME & UNIT TRUST

July 9, 2024

"Dull market ahead of bill and bond auctions"

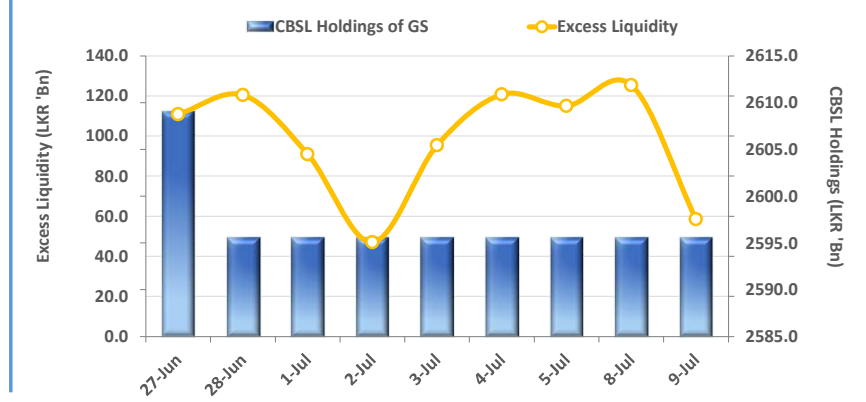
The secondary market yield curve remained broadly unchanged, reflecting dull activity and thin trading volumes across the market. Market participants were on a wait and see approach ahead of the treasury bond auction scheduled to be held on 11th Thursday for LKR 58.0Bn from 15 Dec 2027 maturity and LKR 80.0Bn from the 01 Dec 2031 maturity. Among the maturities traded, notable trades were observed amongst mid tenors, where 15.09.29 was seen trading between rates of 12.05% - 12.08%, and 15.03.30 was seen trading at a rate of 12.15%. At the tomorrow's weekly Treasury bill auction, CBSL announced to issue, LKR 30.0Bn from 91-day maturity, LKR 40.0Bn is expected to be raised from 182-day maturity, while LKR 35.0Bn is to be raised from 364-day maturity. On the external front, LKR slightly appreciated against the USD, closing at 304.5/USD. Meanwhile, CBSL Holdings of Government securities remained at LKR 2,595.6Bn today. Overnight liquidity in the banking system contracted to LKR 58.6Bn from LKR 125.4Bn recorded the previous day.

UNIT TRUSTS

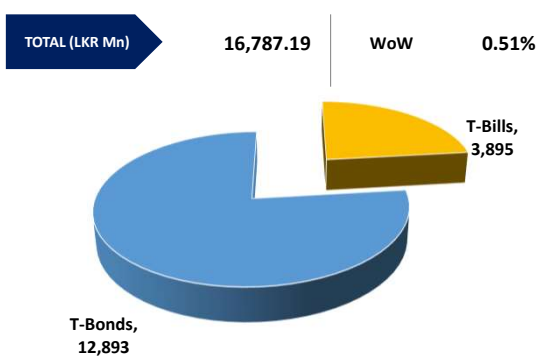
08-Jul-24

First Capital Unit Trust Funds		Sell Price	Buy Price	Avg. Yield
		LKR	LKR	
First Capital Money Market Fund	FCMMF	3,130.38	3,130.38	10.36%
First Capital Gilt Edge Fund	FCGEF	2,373.06	2,373.06	8.30%
First Capital Wealth Fund	FCWF	1,900.20	1,900.15	33.79%
First Capital Equity Fund	FCEF	2,553.41	2,515.11	11.80%
First Capital Money Plus Fund	FCMPF	1,016.43	1,016.43	7.14%

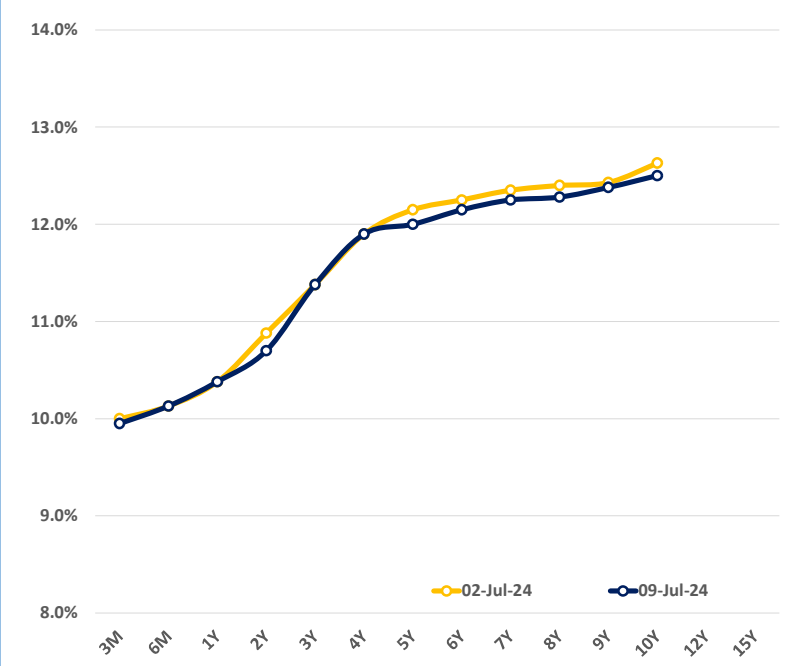
EXCESS LIQUIDITY AND CBSL HOLDINGS



OUTSTANDING STOCK [GSEC]

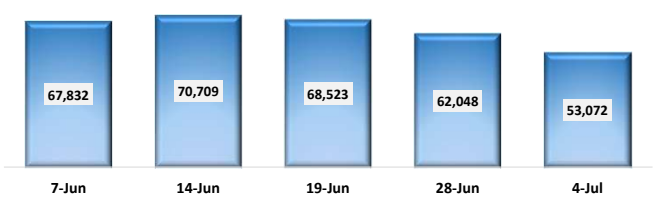


BILLS AND BONDS YIELDS

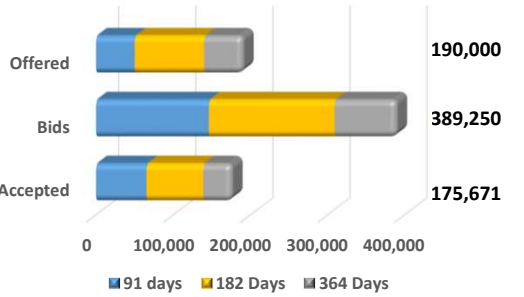


Tenure	Bid	Offer	Today	Last Week	Change (bps)
< 91 Days < 3M	10.00%	9.90%	9.95%	10.00%	-5
< 182 Days < 6M	10.25%	10.00%	10.13%	10.13%	0
< 364 Days < 1Y	10.50%	10.25%	10.38%	10.38%	0
01-Jun-26 < 2Y	10.75%	10.65%	10.70%	10.88%	-18
01-May-27 < 3Y	11.50%	11.25%	11.38%	11.38%	0
01-May-28 < 4Y	11.95%	11.85%	11.90%	11.90%	0
15-Jul-29 < 5Y	12.05%	11.95%	12.00%	12.15%	-15
15-May-30 < 6Y	12.20%	12.10%	12.15%	12.25%	-10
15-May-31 < 7Y	12.30%	12.20%	12.25%	12.35%	-10
01-Jun-32 < 8Y	12.35%	12.20%	12.28%	12.40%	-12
01-Jun-33 < 9Y	12.50%	12.25%	12.38%	12.43%	-5
01-Jan-34 < 10Y	12.60%	12.40%	12.50%	12.63%	-13
15-Mar-35 < 12Y	N/A	N/A	N/A	N/A	N/A
15-Aug-39 < 15Y	N/A	N/A	N/A	N/A	N/A
01-Jan-41 < 20Y	N/A	N/A	N/A	N/A	N/A

FOREIGN HOLDING (LKR MN)



T-BILL AUCTION (LKR MN)

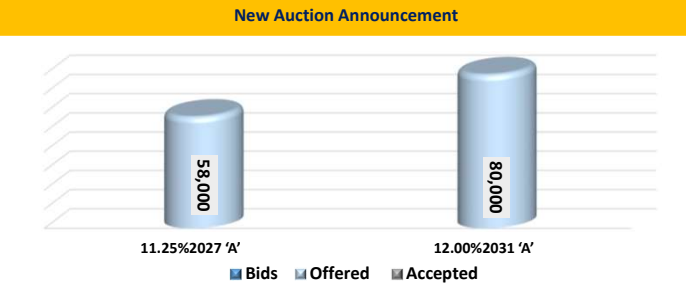


T-BOND AUCTION (LKR MN)

Auction Date: 3-Jul-24
 Settlement Date: 5-Jul-24

91 days	10.07%	0 bps
184 days	10.19%	0 bps
364 days	10.31%	0 bps

T-BOND AUCTION (LKR MN)



MATURITY TABLE (LKR MN)

