


First Capital
A Janashakti Group Company

DAILY FIXED INCOME & UNIT TRUST



July 12, 2024

"Mixed sentiment inverts the secondary market"

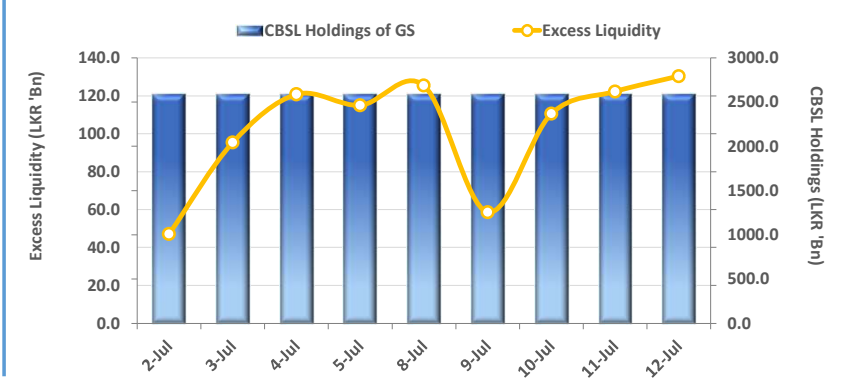
The secondary market witnessed a mixed sentiment during the day backed by limited activity and thin volumes as investors eagerly yearned for clear direction and market sentiment. Towards the short end of the curve, slight selling interest was witnessed on 15.12.26 which traded at 10.90%. Furthermore, 15.12.27 which was traded at the T-Bond auction yesterday witnessed buying interest and marked trades during the day registering at 11.80%. Furthermore, selling interest gathered around liquid maturities namely, 15.01.28, 15.02.28 and 01.05.28 which traded between the range of 11.85% - 12.00%. Towards the mid end of the curve, 01.12.31 tenor traded at 12.65%. On the external side the LKR slightly appreciated for the 4th consecutive day recording at LKR 303.3. CBSL announced an LKR 110.0Bn T-bill auction scheduled for the 17th Jul-24 where, LKR 30.0Bn is expected to be raised from 91 day maturity, another LKR 30.0Bn from 182 day maturity and LKR 50.0Bn from 364 day maturity. Overnight liquidity improved to LKR 130.4Bn today from LKR 122.3Bn recorded during the previous day. Moreover CBSL holdings remained stagnant at LKR 2,595.6Bn for the 11th consecutive day.

UNIT TRUSTS

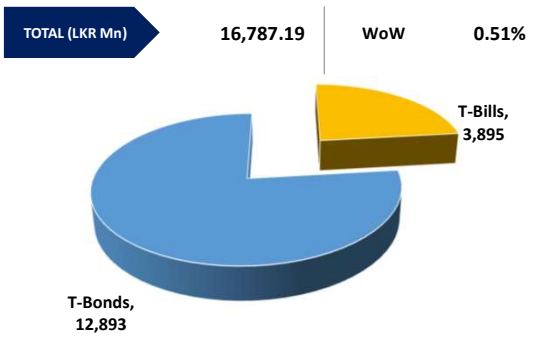
11-Jul-24

First Capital Unit Trust Funds			Sell Price	Buy Price	Avg. Yield
			LKR	LKR	
First Capital Money Market Fund	FCMMF		3,133.02	3,133.02	10.26%
First Capital Gilt Edge Fund	FCGEF		2,375.37	2,375.37	9.46%
First Capital Wealth Fund	FCWF		1,900.81	1,900.76	33.34%
First Capital Equity Fund	FCEF		2,542.22	2,504.09	11.31%
First Capital Money Plus Fund	FCMPF		1,017.05	1,017.05	7.50%

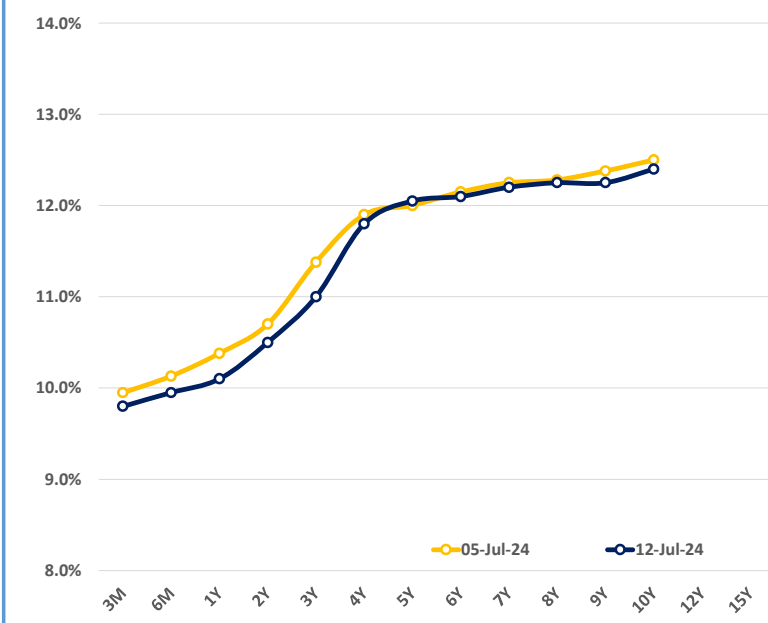
EXCESS LIQUIDITY AND CBSL HOLDINGS



OUTSTANDING STOCK [GSEC]

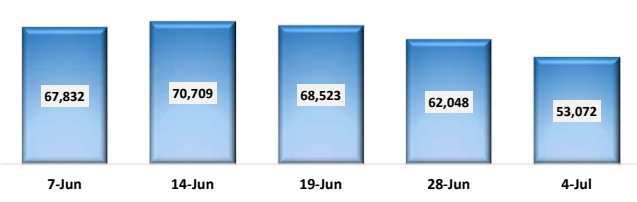


BILLS AND BONDS YIELDS

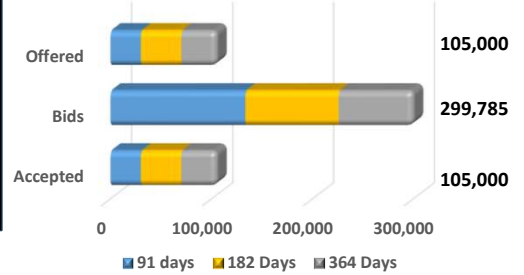


Tenure	Bid	Offer	Today	Last Week	Change (bps)
< 91 Days < 3M	9.95%	9.80%	9.80%	9.95%	-15
< 182 Days < 6M	10.10%	9.95%	9.95%	10.13%	-18
< 364 Days < 1Y	10.30%	10.10%	10.10%	10.38%	-28
01-Jun-26 < 2Y	10.90%	10.70%	10.50%	10.70%	-20
01-May-27 < 3Y	11.70%	11.40%	11.00%	11.38%	-38
01-May-28 < 4Y	12.10%	11.90%	11.80%	11.90%	-10
15-Jul-29 < 5Y	12.20%	12.10%	12.05%	12.00%	+5
15-May-30 < 6Y	12.35%	12.20%	12.10%	12.15%	-5
15-May-31 < 7Y	12.60%	12.40%	12.20%	12.25%	-5
01-Jul-32 < 8Y	12.75%	12.40%	12.25%	12.28%	-3
01-Jun-33 < 9Y	13.00%	12.50%	12.25%	12.38%	-13
01-Jan-34 < 10Y	13.00%	12.50%	12.40%	12.50%	-10
15-Mar-35 < 12Y	N/A	N/A	N/A	N/A	N/A
15-Aug-39 < 15Y	N/A	N/A	N/A	N/A	N/A
01-Jan-41 < 20Y	N/A	N/A	N/A	N/A	N/A

FOREIGN HOLDING (LKR MN)



T-BILL AUCTION (LKR MN)



Auction Date: 10-Jul-24
Settlement Date: 12-Jul-24

91 days	9.91%	▼	-16 bps
184 days	10.10%	▼	-9 bps
364 days	10.21%	▼	-10 bps

T-BOND AUCTION (LKR MN)



MATURITY TABLE (LKR MN)

