



First Capital
A Janashakthi Group Company

DAILY FIXED INCOME & UNIT TRUST

September 23, 2024

"Resurgence of market activity post-election results"

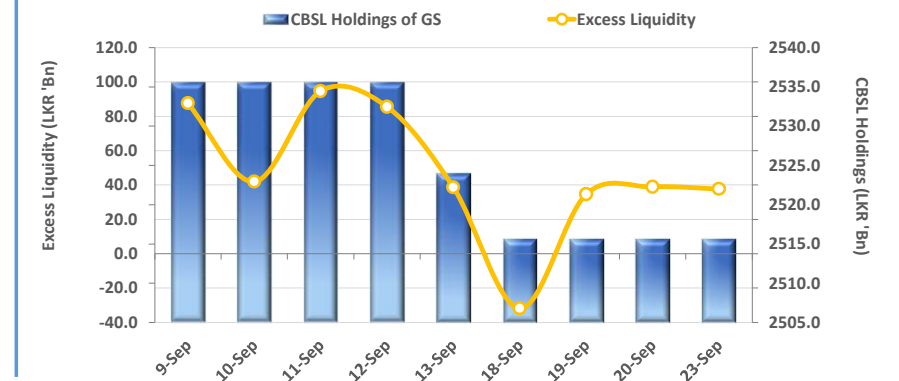
The secondary market experienced slight buying interest during the day on the back of moderate volumes as yields across the board witnessed a modest decline. Furthermore, the broader market pivoted from the uphill trend in rates witnessed during the previous week, influenced by the uncertainty surrounding the political landscape in the country. However, the secondary market experienced revitalized interest during the day signalled by the people's mandate after the announcement of the 9th executive president of Sri Lanka yesterday. Numerous trades were enticed during the day as they registered comparatively lower, namely 03M bill traded at 10.50% whilst the 06M bill traded at 10.75%. Liquid tenors 2026, 2028 and 2029 recorded trades as, 01.02.26 maturity traded at 11.40%, 01.06.26 maturity traded at 11.60%. 15.02.28 traded between the range of 13.60% - 13.30% and 01.05.28 traded between the range of 13.60% - 13.35%. 15.06.29 maturities traded between 13.80% - 13.60% whilst 15.09.29 traded at 13.70%. Overnight liquidity was recorded at LKR 37.7Bn and CBSL holdings remained stagnant at LKR 2,515.6Bn. On the external side LKR slightly depreciated against the green back recording at LKR 304.9 during the day.

UNIT TRUSTS

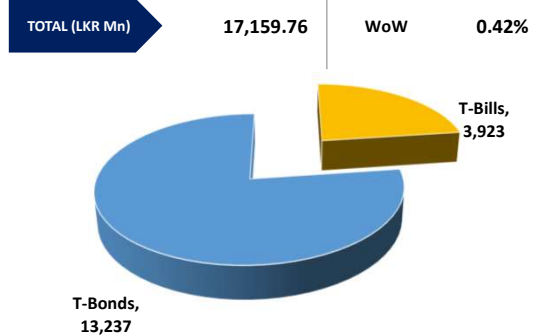
22-Sep-24

First Capital Unit Trust Funds			Sell Price	Buy Price	Avg. Yield
			LKR	LKR	
First Capital Money Market Fund	FCMMF		3,196.79	3,196.79	10.08%
First Capital Gilt Edge Fund	FCGEF		2,411.44	2,411.44	3.66%
First Capital Wealth Fund	FCWF		1,858.60	1,858.55	20.61%
First Capital Equity Fund	FCEF		2,373.24	2,337.64	3.91%
First Capital Money Plus Fund	FCMPF		1,034.60	1,034.60	9.39%

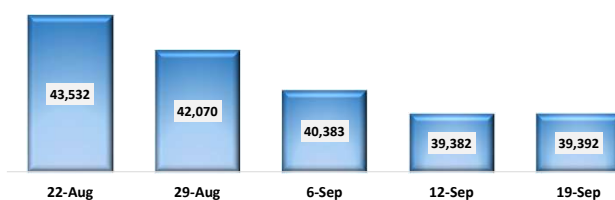
EXCESS LIQUIDITY AND CBSL HOLDINGS



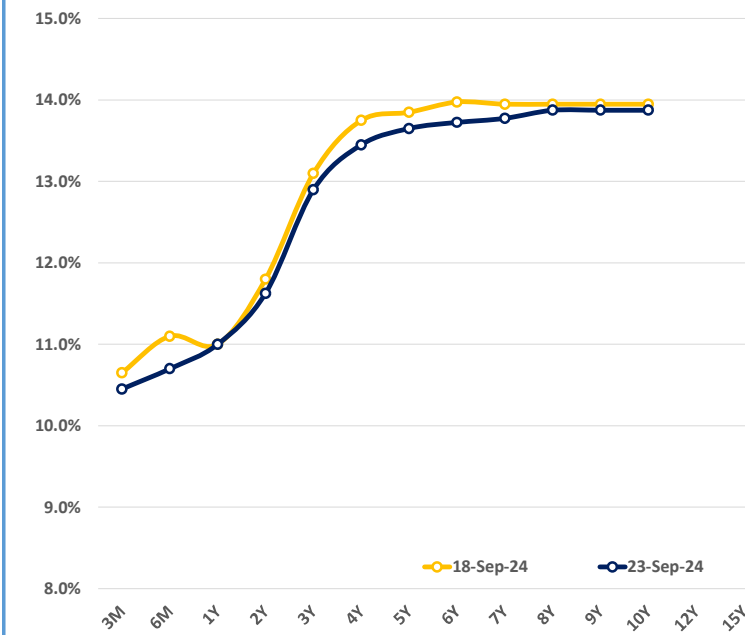
OUTSTANDING STOCK [GSEC]



FOREIGN HOLDING (LKR MN)

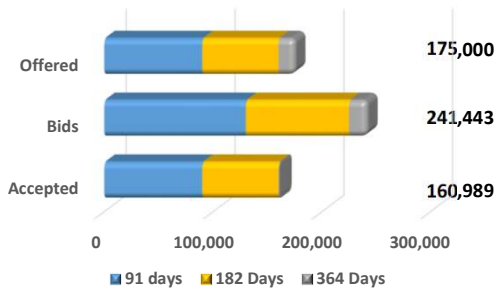


BILLS AND BONDS YIELDS



Tenure	Bid	Offer	Today	Last Week	Change (bps)	
< 91 Days	< 3M	10.50%	10.40%	10.45%	10.65%	-20
< 182 Days	< 6M	10.75%	10.65%	10.70%	11.10%	-40
< 364 Days	< 1Y	11.25%	10.75%	11.00%	11.00%	0
01-Aug-26	< 2Y	11.75%	11.50%	11.63%	11.80%	-18
15-Sep-27	< 3Y	13.00%	12.80%	12.90%	13.10%	-20
01-Jul-28	< 4Y	13.50%	13.40%	13.45%	13.75%	-30
15-Sep-29	< 5Y	13.70%	13.60%	13.65%	13.85%	-20
15-May-30	< 6Y	13.85%	13.60%	13.73%	13.98%	-25
01-Dec-31	< 7Y	13.90%	13.65%	13.78%	13.95%	-18
01-Oct-32	< 8Y	14.00%	13.75%	13.88%	13.95%	-8
01-Jun-33	< 9Y	14.00%	13.75%	13.88%	13.95%	-8
01-Jan-34	< 10Y	14.00%	13.75%	13.88%	13.95%	-8
15-Mar-35	< 12Y	N/A	N/A	N/A	N/A	N/A
15-Aug-39	< 15Y	N/A	N/A	N/A	N/A	N/A
01-Jan-41	< 20Y	N/A	N/A	N/A	N/A	N/A

T-BILL AUCTION (LKR MN)



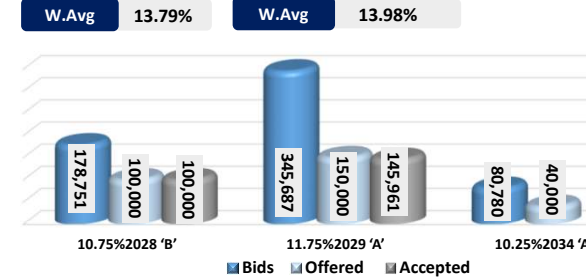
Auction Date: 18-Sep-24

Settlement Date: 20-Sep-24

91 days	10.49%	▲	+50 bps
184 days	10.76%	▲	+52 bps
364 days	10.07%	◀	0 bps

T-BOND AUCTION (LKR MN)

Auction Date: 12-Sep-24



MATURITY TABLE (LKR MN)

Week ending: 27-Sep-24

