

First Capital
A Janashakti Group Company

DAILY FIXED INCOME & UNIT TRUST

October 4, 2024

"Profit-taking continued, resulting in an uptick in yields"

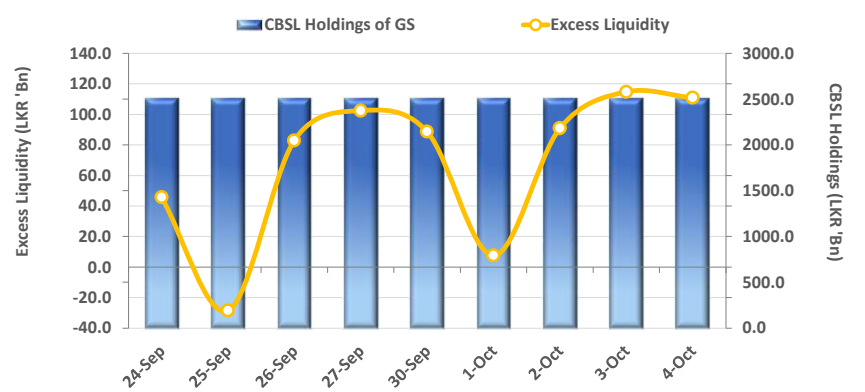
The secondary market yield curve saw a slight uptick on the short to mid end as market participants sought to realize gains from the recent bull run. In the early hours, there was a moderate buying sentiment for the 15.05.26 and 01.06.26 bonds, which traded at 10.50%. On the mid end, the 15.12.27, 15.02.28, and 15.12.28 bonds changed hands at 11.45%, 11.55%, and 11.70%, respectively. As the day progressed, heightened selling interest led to a rise in interest rates across these maturities. The 15.12.27 bond traded at 11.55%, while the 15.02.28, 01.05.28, 01.07.28, and 15.12.28 bonds traded in a range of 11.70% to 11.80%. Additionally, the 15.05.30 bond displayed mixed sentiment, trading at 12.10%. Furthermore, the CBSL has announced a Treasury Bill issuance totaling LKR 85.0Bn through an auction scheduled for 9th Oct 2024, out of the total auction, LKR 40.0Bn is to be raised from 91-day maturity, LKR 35.0Bn is expected to be raised from 182-day maturity while LKR 10.0Bn is to be raised from 364-day maturity. On the external side, the LKR slightly depreciated against the greenback closing at LKR 295.5. Meanwhile, CBSL liquidity started to build up from dollar purchases. Accordingly, overnight liquidity recorded at LKR 110.9Bn while CBSL Holdings remained unchanged at LKR 2,515.6Bn.

UNIT TRUSTS

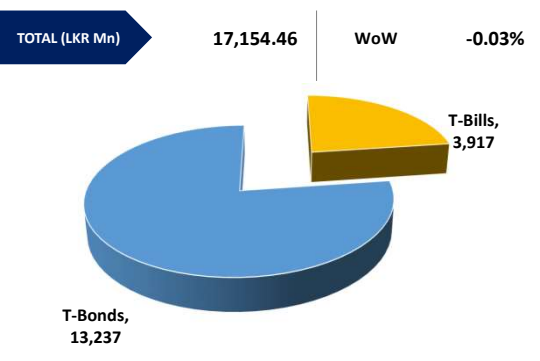
03-Oct-24

First Capital Unit Trust Funds			Sell Price	Buy Price	Avg. Yield
			LKR	LKR	
First Capital Money Market Fund	FCMMF		3,206.61	3,206.61	10.10%
First Capital Gilt Edge Fund	FCGEF		2,420.40	2,420.40	12.63%
First Capital Wealth Fund	FCWF		1,937.09	1,937.04	26.19%
First Capital Equity Fund	FCEF		2,600.04	2,561.04	13.84%
First Capital Money Plus Fund	FCMPF		1,037.51	1,037.51	9.31%

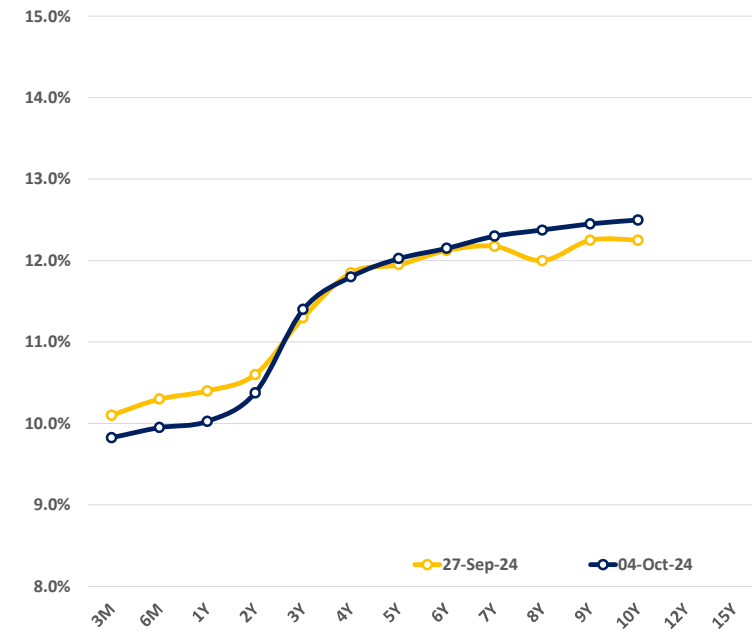
EXCESS LIQUIDITY AND CBSL HOLDINGS



OUTSTANDING STOCK [GSEC]

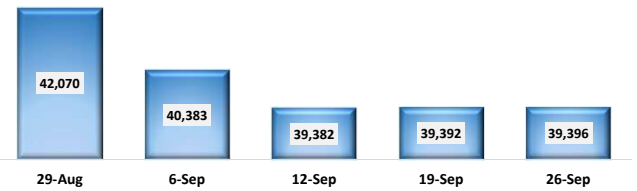


BILLS AND BONDS YIELDS

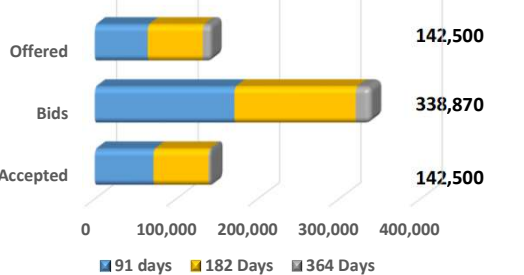


Tenure	Bid	Offer	Today	Last Week	Change (bps)	
< 91 Days	< 3M	9.90%	9.75%	9.83%	10.10%	-28
< 182 Days	< 6M	10.00%	9.90%	9.95%	10.30%	-35
< 364 Days	< 1Y	10.10%	9.95%	10.03%	10.40%	-37
01-Aug-26	< 2Y	10.50%	10.25%	10.38%	10.60%	-23
15-Sep-27	< 3Y	11.45%	11.35%	11.40%	11.30%	+10
01-Jul-28	< 4Y	11.85%	11.75%	11.80%	11.85%	-5
15-Sep-29	< 5Y	12.10%	11.95%	12.03%	11.95%	+8
15-May-30	< 6Y	12.20%	12.10%	12.15%	12.13%	+3
01-Dec-31	< 7Y	12.40%	12.20%	12.30%	12.18%	+13
01-Oct-32	< 8Y	12.50%	12.25%	12.38%	12.00%	+38
01-Jun-33	< 9Y	12.65%	12.25%	12.45%	12.25%	+20
01-Jan-34	< 10Y	12.75%	12.25%	12.50%	12.25%	+25
15-Mar-35	< 12Y	N/A	N/A	N/A	N/A	N/A
15-Aug-39	< 15Y	N/A	N/A	N/A	N/A	N/A
01-Jan-41	< 20Y	N/A	N/A	N/A	N/A	N/A

FOREIGN HOLDING (LKR MN)



T-BILL AUCTION (LKR MN)



Auction Date: 2-Oct-24

Settlement Date: 4-Oct-24

91 days	10.06%	▼	-43 bps
184 days	10.37%	▼	-35 bps
364 days	10.04%	▼	-1 bps

T-BOND AUCTION (LKR MN)

Auction Date: 12-Sep-24

W.Avg: 13.79% (2028 'B'), 13.98% (2029 'A'), NA (2034 'A')



MATURITY TABLE (LKR MN)

Week ending: 11-Oct-24

