



First Capital
A Janashakti Group Company

DAILY FIXED INCOME & UNIT TRUST



October 11, 2024

"Yield curve edges down amidst post-auction buying"

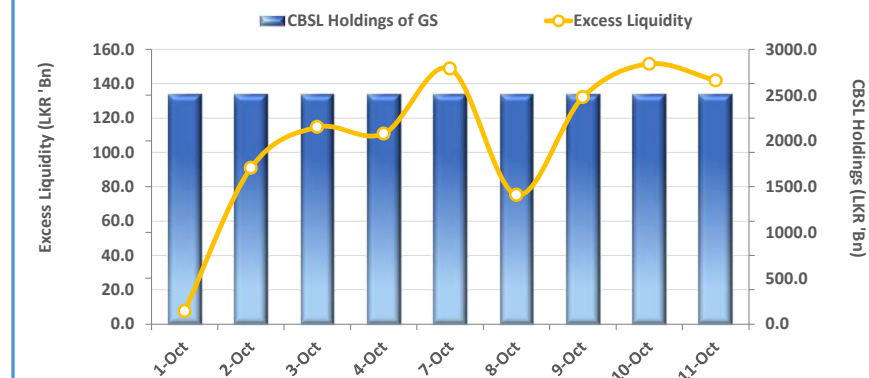
At today's LKR 95.0Bn worth bond auction, the total offered was fully accepted from each maturity with 15.03.2028 bond closing at a weighted average yield rate of 11.79% amidst higher reception. Meanwhile, 01.10.2032 bond closed at 12.36% at the end of today's auction. Post auction, strong bullish interest emerged in the secondary market resulting in a downward shift in the yield curve. Mid tenors attracted larger interest during the day resulting in a 10-15bps decline in yields. Accordingly, on the liquid tenors, 15.12.2027 closed trades at 11.30% while 15.02.2028 and today's auction bond; 15.03.2028 closed deals at 11.55%. 01.05.2028 and 01.07.2028 registered transactions at 11.65% level. Moreover, 15.12.2028 recorded transactions at 11.75% and 15.09.2029 recorded transactions at 11.85% at the end of the trading day. On the external side, rupee exhibited a mixed trend against major currencies. Accordingly, LKR slightly depreciated against the USD and AUD compared to the previous day, closing at LKR 293.1/USD and LKR 197.6/AUD, respectively. However, the rupee registered an appreciation against other currencies namely, GBP and EUR. Meanwhile, at the end of the day, overnight liquidity closed at LKR 141.83Bn while CBSL Holdings remained steady at LKR 2,515.62Bn.

UNIT TRUSTS

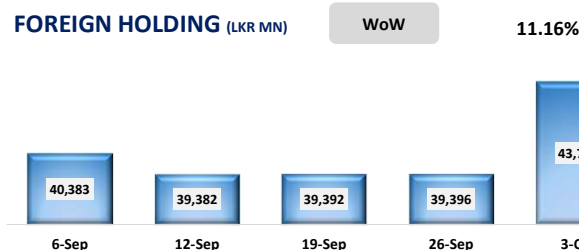
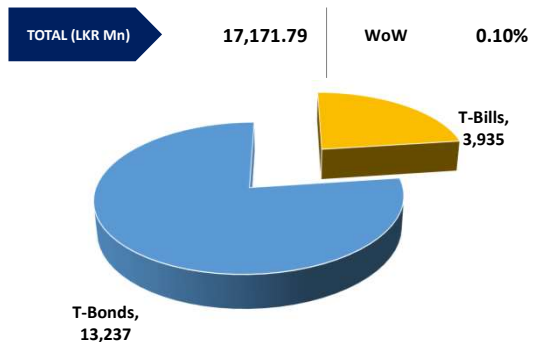
10-Oct-24

First Capital Unit Trust Funds			Sell Price	Buy Price	Avg. Yield
			LKR	LKR	
First Capital Money Market Fund	FCMMF		3,212.78	3,212.78	10.03%
First Capital Gilt Edge Fund	FCGEF		2,425.68	2,425.68	11.37%
First Capital Wealth Fund	FCWF		1,937.81	1,937.76	25.60%
First Capital Equity Fund	FCEF		2,644.51	2,604.84	15.79%
First Capital Money Plus Fund	FCMPF		1,039.35	1,039.35	9.25%

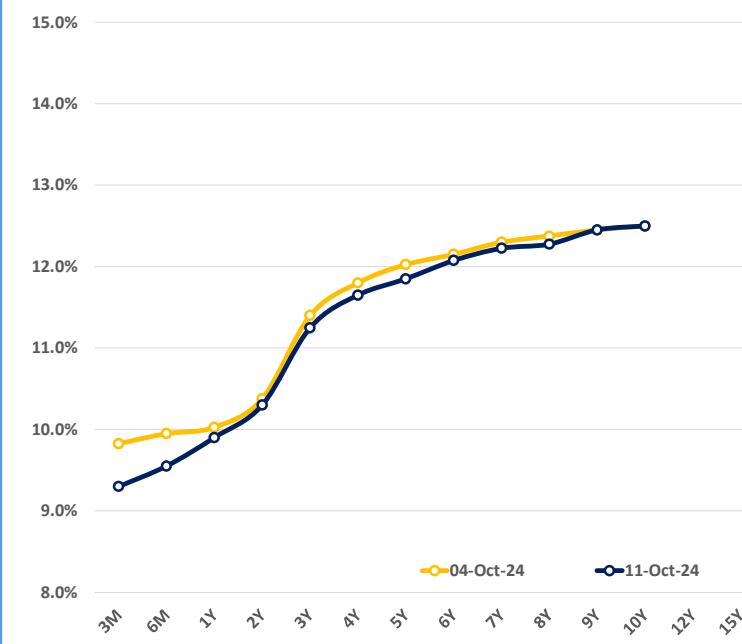
EXCESS LIQUIDITY AND CBSL HOLDINGS



OUTSTANDING STOCK [GSEC]

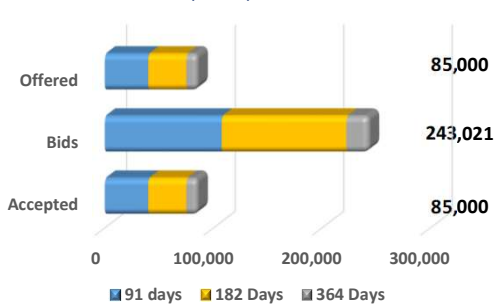


BILLS AND BONDS YIELDS



Tenure	Bid	Offer	Today	Last Week	Change (bps)	
< 91 Days	< 3M	9.40%	9.20%	9.30%	9.83%	-53
< 182 Days	< 6M	9.60%	9.50%	9.55%	9.95%	-40
< 364 Days	< 1Y	10.00%	9.80%	9.90%	10.03%	-13
01-Aug-26	< 2Y	10.35%	10.25%	10.30%	10.38%	-8
15-Sep-27	< 3Y	11.30%	11.20%	11.25%	11.40%	-15
01-Jul-28	< 4Y	11.70%	11.60%	11.65%	11.80%	-15
15-Sep-29	< 5Y	11.90%	11.80%	11.85%	12.03%	-18
15-May-30	< 6Y	12.15%	12.00%	12.08%	12.15%	-8
01-Dec-31	< 7Y	12.30%	12.15%	12.23%	12.30%	-8
01-Oct-32	< 8Y	12.40%	12.15%	12.28%	12.38%	-10
01-Jun-33	< 9Y	12.60%	12.30%	12.45%	12.45%	0
01-Jan-34	< 10Y	12.75%	12.25%	12.50%	12.50%	0
15-Mar-35	< 12Y	N/A	N/A	N/A	N/A	N/A
15-Aug-39	< 15Y	N/A	N/A	N/A	N/A	N/A
01-Jan-41	< 20Y	N/A	N/A	N/A	N/A	N/A

T-BILL AUCTION (LKR MN)

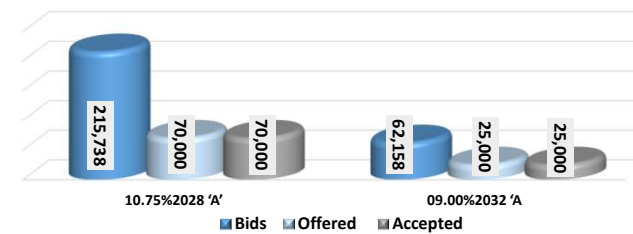


Auction Date: 9-Oct-24
Settlement Date: 11-Oct-24

91 days	9.69%	▼	-37 bps
184 days	9.95%	▼	-42 bps
364 days	10.00%	▼	-4 bps

T-BOND AUCTION (LKR MN)

Auction Date: 11-Oct-24
W.Avg: 11.79%



MATURITY TABLE (LKR MN)

