


First Capital
A Janashakti Group Company

DAILY FIXED INCOME & UNIT TRUST



October 14, 2024

“Mid tenors edge low as buying strengthens”

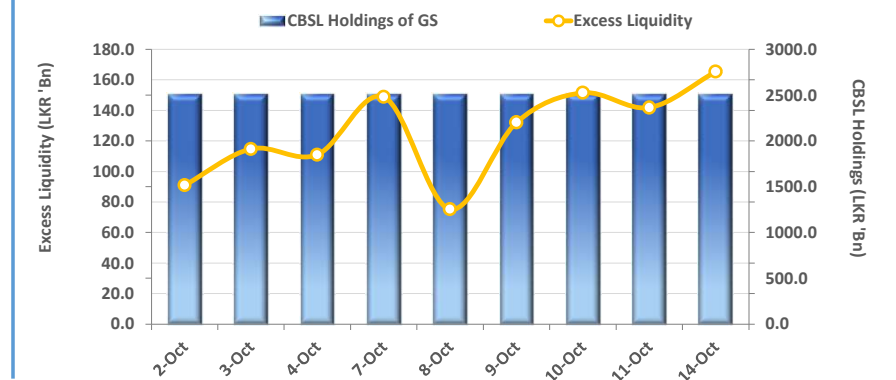
The secondary market yield curved edged down on the belly of the curve, as mid tenors continued to attract interest during the day while long tenors did not trade mostly. 2027 and 2028 mid tenors witnessed higher demand resulting in a 10-15bps decline at today's trading session. Accordingly, 2027 maturities; 01.05.2027, 15.12.2027 and 15.09.2027 registered transactions at 11.20%. Several maturities from the 2028 tenors also observed trades. Accordingly, 15.02.2028 and 15.03.2028 closed trades at 11.45% whilst 01.05.2028 and 01.07.2028 closed trades at 11.50%. Moreover, 15.12.2028 too registered trades at today's session at 11.63%. Meanwhile, 15.09.2029 and 15.05.2030 also witnessed buying at 11.70% and 12.00%, respectively. On the external side, LKR appreciated against the greenback, closing at LKR 292.9/USD compared to previous day's closing of LKR 293.1/USD. Similarly, rupee appreciated against other major currencies including the GBP, EUR, JPY, and AUD. Meanwhile, overnight liquidity closed at LKR 165.31Bn and CBSL Holdings remained stagnant at LKR 2,515.6Bn. AWPR for week ending 11th October saw an uptick of 12bps, registering at 9.25% compared to previous week's closing of 9.13%. Moreover, foreign held outstanding stock of government securities inclined by 15.6%WoW, indicating a positive momentum in foreign interest.

UNIT TRUSTS

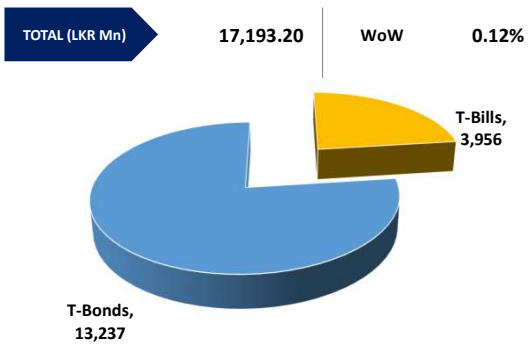
13-Oct-24

First Capital Unit Trust Funds			Sell Price	Buy Price	Avg. Yield
			LKR	LKR	
First Capital Money Market Fund	FCMMF		3,215.30	3,215.30	10.00%
First Capital Gilt Edge Fund	FCGEF		2,427.24	2,427.24	10.83%
First Capital Wealth Fund	FCWF		1,939.78	1,939.73	25.49%
First Capital Equity Fund	FCEF		2,673.27	2,633.17	17.04%
First Capital Money Plus Fund	FCMPF		1,040.10	1,040.10	9.04%

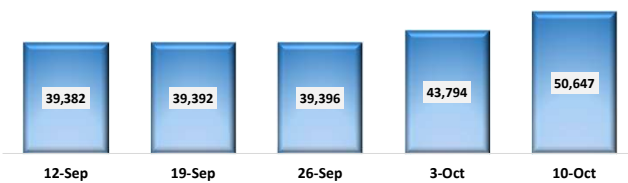
EXCESS LIQUIDITY AND CBSL HOLDINGS



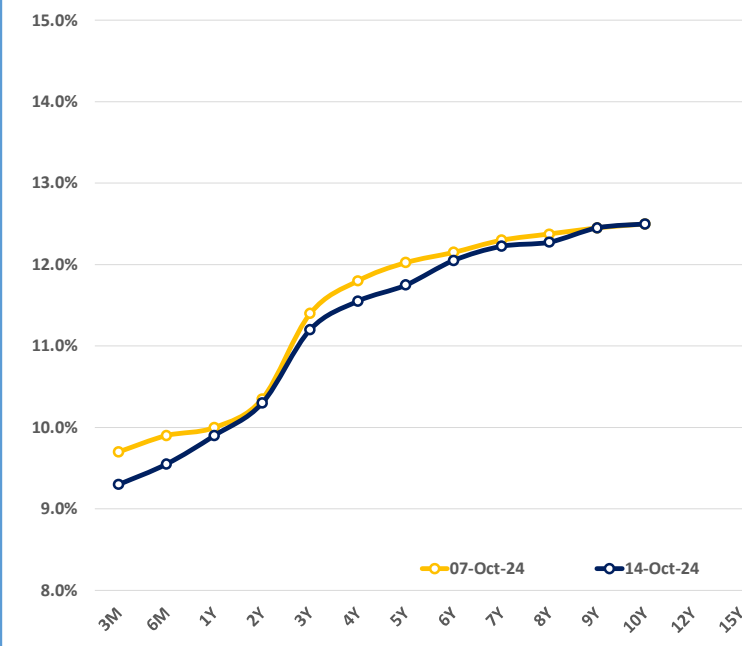
OUTSTANDING STOCK [GSEC]



FOREIGN HOLDING (LKR MN) WoW 15.65%

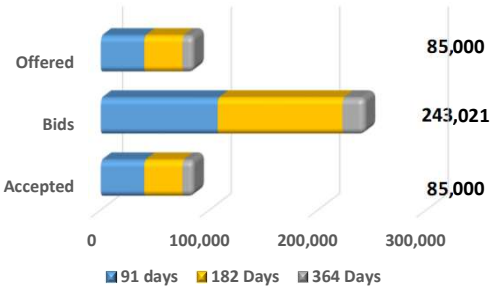


BILLS AND BONDS YIELDS



Tenure	Bid	Offer	Today	Last Week	Change (bps)	
< 91 Days	< 3M	9.40%	9.20%	9.30%	9.70%	-40
< 182 Days	< 6M	9.60%	9.50%	9.55%	9.90%	-35
< 364 Days	< 1Y	10.00%	9.80%	9.90%	10.00%	-10
01-Aug-26	< 2Y	10.35%	10.25%	10.30%	10.35%	-5
15-Sep-27	< 3Y	11.25%	11.15%	11.20%	11.40%	-20
01-Jul-28	< 4Y	11.60%	11.50%	11.55%	11.80%	-25
15-Sep-29	< 5Y	11.80%	11.70%	11.75%	12.03%	-28
15-May-30	< 6Y	12.10%	12.00%	12.05%	12.15%	-10
01-Dec-31	< 7Y	12.30%	12.15%	12.23%	12.30%	-8
01-Oct-32	< 8Y	12.40%	12.15%	12.28%	12.38%	-10
01-Jun-33	< 9Y	12.60%	12.30%	12.45%	12.45%	0
01-Jan-34	< 10Y	12.75%	12.25%	12.50%	12.50%	0
15-Mar-35	< 12Y	N/A	N/A	N/A	N/A	N/A
15-Aug-39	< 15Y	N/A	N/A	N/A	N/A	N/A
01-Jan-41	< 20Y	N/A	N/A	N/A	N/A	N/A

T-BILL AUCTION (LKR MN)



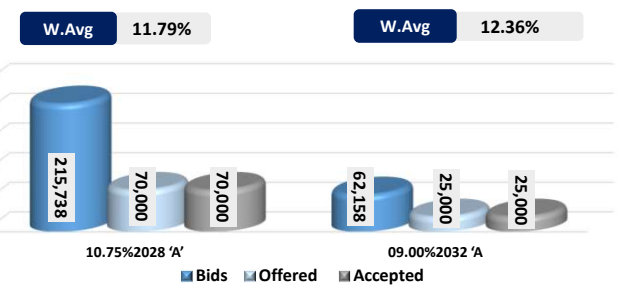
Auction Date 9-Oct-24

Settlement Date 11-Oct-24

91 days	9.69%	▼	-37 bps
184 days	9.95%	▼	-42 bps
364 days	10.00%	▼	-4 bps

T-BOND AUCTION (LKR MN)

Auction Date 11-Oct-24



MATURITY TABLE (LKR MN)

Week ending 18-Oct-24

