



First Capital
A Janashakti Group Company

DAILY FIXED INCOME & UNIT TRUST



October 22, 2024

"Investor interest picks up ahead of weekly bill auction"

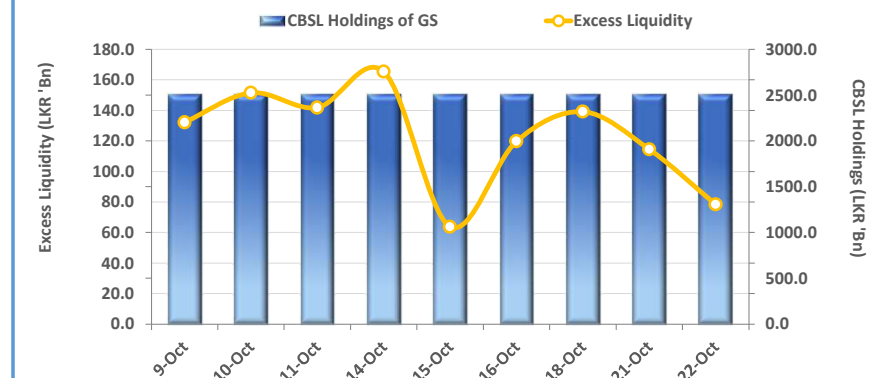
The secondary market yield curve remained broadly unchanged during the day. However, there was a moderate volume recorded, indicating improved investor interest ahead of the weekly auction. Foreign buying emerged on the short tenor 2026, with trades registered between 10.45%-10.53% on the 01.06.2026 and 01.08.2026 maturities. Moreover, on the 3Yr bond, 15.09.2027 and 15.12.2027 recorded transactions within a range of 11.43%-11.45%. Furthermore, several maturities from the 2028 bond traded; namely the 15.02.2028, 15.03.2028, 01.05.2028, 01.07.2028 and 15.12.2028 which changed hands within the range of 11.75%-11.95%. On the mid end, 15.05.2030 and 01.10.2032 registered trades within 12.20%-12.25% and 12.35%-12.37%, respectively. An LKR 125.0Bn worth T-Bill auction is scheduled for tomorrow, raising LKR 40.0Bn from 91-days maturity whilst LKR 42.5Bn each being raised from both 182-days and 364-days maturities. On the external side, LKR depreciated against the greenback during the day, closing at LKR 293.1/USD compared to yesterday's closing of LKR 292.9/USD. However, the rupee displayed an appreciation against other major currencies such as the GBP, EUR, AUD and JPY. Meanwhile, overnight liquidity declined to LKR 78.39Bn and CBSL Holdings remained stagnant at LKR 2,515.6Bn.

UNIT TRUSTS

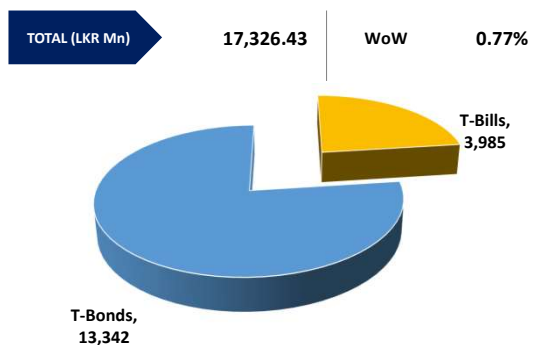
21-Oct-24

First Capital Unit Trust Funds			Sell Price	Buy Price	Avg. Yield
			LKR	LKR	
First Capital Money Market Fund	FCMMF		3,222.28	3,222.28	9.94%
First Capital Gilt Edge Fund	FCGEF		2,432.48	2,432.48	9.32%
First Capital Wealth Fund	FCWF		1,945.60	1,945.55	25.24%
First Capital Equity Fund	FCEF		2,667.93	2,627.91	16.81%
First Capital Money Plus Fund	FCMPF		1,042.16	1,042.16	9.02%

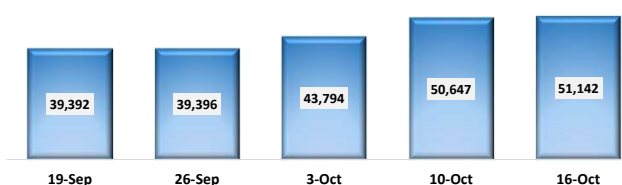
EXCESS LIQUIDITY AND CBSL HOLDINGS



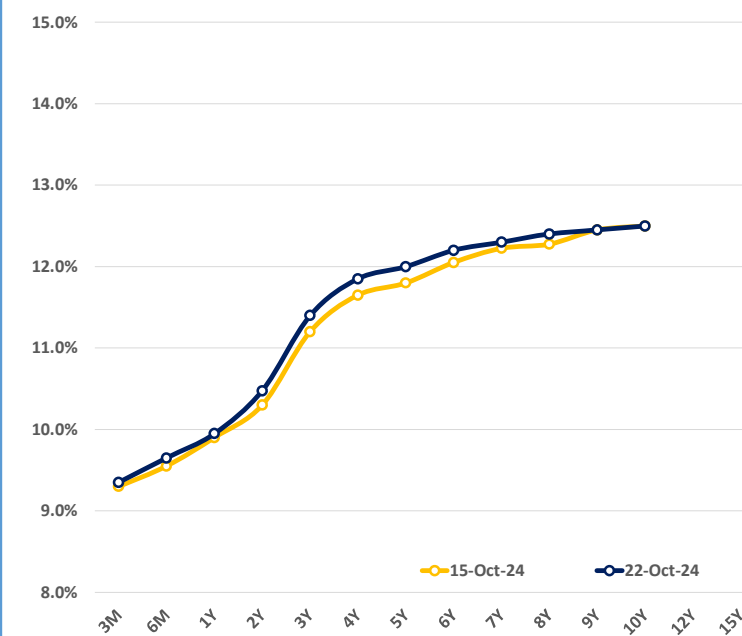
OUTSTANDING STOCK [GSEC]



FOREIGN HOLDING (LKR MN)

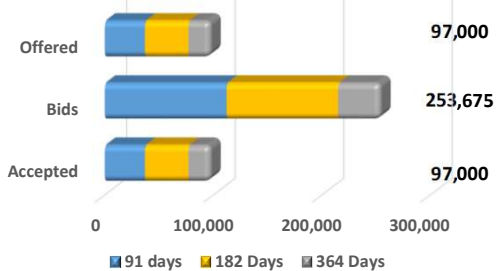


BILLS AND BONDS YIELDS



Tenure	Bid	Offer	Today	Last Week	Change (bps)	
< 91 Days	< 3M	9.40%	9.30%	9.35%	9.30%	+5
< 182 Days	< 6M	9.70%	9.60%	9.65%	9.55%	+10
< 364 Days	< 1Y	10.00%	9.90%	9.95%	9.90%	+5
01-Aug-26	< 2Y	10.50%	10.45%	10.48%	10.30%	+18
15-Sep-27	< 3Y	11.45%	11.35%	11.40%	11.20%	+20
01-Jul-28	< 4Y	11.90%	11.80%	11.85%	11.65%	+20
15-Sep-29	< 5Y	12.05%	11.95%	12.00%	11.80%	+20
15-May-30	< 6Y	12.25%	12.15%	12.20%	12.05%	+15
01-Dec-31	< 7Y	12.35%	12.25%	12.30%	12.23%	+8
01-Oct-32	< 8Y	12.45%	12.35%	12.40%	12.28%	+13
01-Jun-33	< 9Y	12.60%	12.30%	12.45%	12.45%	0
01-Jan-34	< 10Y	12.75%	12.25%	12.50%	12.50%	0
15-Mar-35	< 12Y	N/A	N/A	N/A	N/A	N/A
15-Aug-39	< 15Y	N/A	N/A	N/A	N/A	N/A
01-Jan-41	< 20Y	N/A	N/A	N/A	N/A	N/A

T-BILL AUCTION (LKR MN)

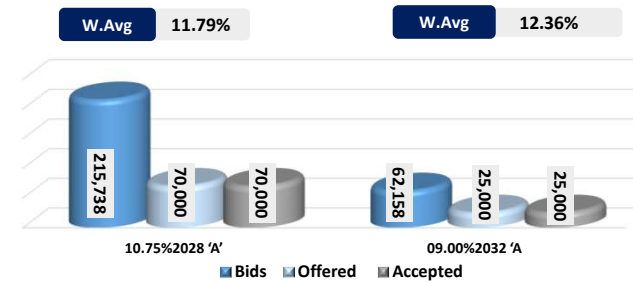


Auction Date: 15-Oct-24
Settlement Date: 18-Oct-24

91 days	9.32%	▼	-37 bps
184 days	9.65%	▼	-30 bps
364 days	9.95%	▼	-5 bps

T-BOND AUCTION (LKR MN)

Auction Date: 11-Oct-24



MATURITY TABLE (LKR MN)

Week ending: 25-Oct-24

