



First Capital  
A Janashakti Group Company

# DAILY FIXED INCOME & UNIT TRUST



November 21, 2024

## "Yield curve rests amidst slight buying interest"

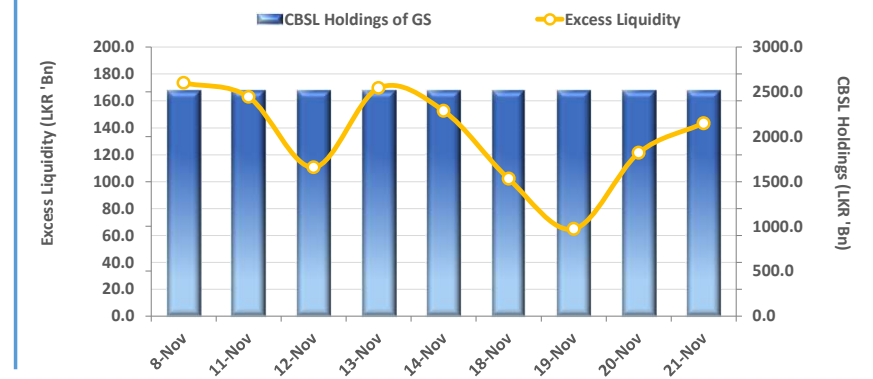
Investor sentiment in the secondary market remained relatively stable following yesterday's LKR 145.0Bn worth T-bill auction, with slight buying interest concentrated on the 3-year and 4-year tenors, keeping the yield curve broadly unchanged. Amongst the traded maturities notable trades were recorded in 2026, 2027, 2028, and 2031 maturities, respectively. At the short end of the curve, 01.06.26, 01.08.26 and 15.12.26 maturities traded between 10.25% to 10.00% whilst 01.05.27 and 15.09.27 maturities traded between 10.90% to 10.80%. Meanwhile, towards the belly end of the curve, 15.03.28 and 15.05.28 maturities traded at 11.15% and 15.12.28 traded at 11.25%. At the tail end of the curve, 01.12.31 traded at 11.70% to 11.65%. On the external side, the LKR slightly depreciated against the greenback closing at LKR 290.98 compared to yesterday's closing at 290.92. However, LKR has appreciated against the USD by 0.9% month-to-date. Furthermore, LKR also appreciated against other major currencies such as the AUD, GBP, JPY, and EUR compared to yesterday. Furthermore, CBSL holdings of government securities remained unchanged, closing at LKR 2,515.62Bn today.

### UNIT TRUSTS

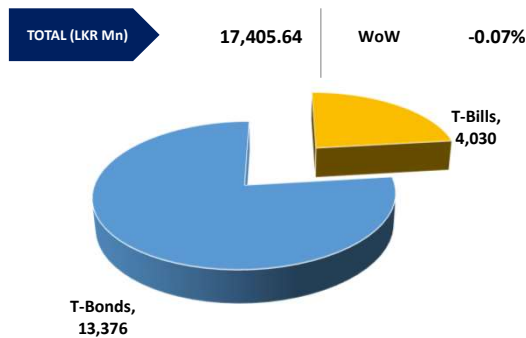
20-Nov-24

First Capital Unit Trust Funds		Sell Price	Buy Price	Avg. Yield
		LKR	LKR	
First Capital Money Market Fund	FCMMF	3,247.52	3,247.52	9.31%
First Capital Gilt Edge Fund	FCGEF	2,449.41	2,449.41	8.68%
First Capital Wealth Fund	FCWF	2,008.55	2,008.50	27.29%
First Capital Equity Fund	FCEF	2,836.10	2,793.56	24.17%
First Capital Money Plus Fund	FCMPF	1,049.79	1,049.79	8.91%

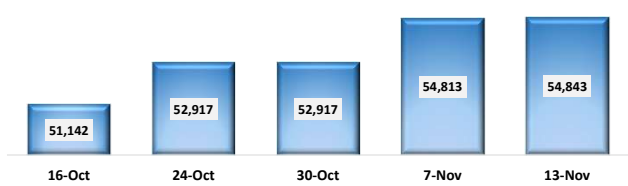
### EXCESS LIQUIDITY AND CBSL HOLDINGS



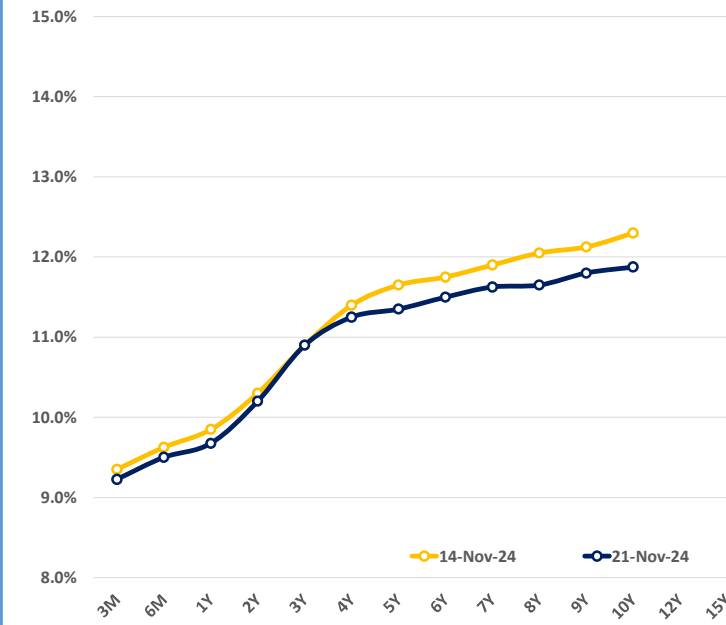
### OUTSTANDING STOCK [GSEC]



### FOREIGN HOLDING (LKR MN)

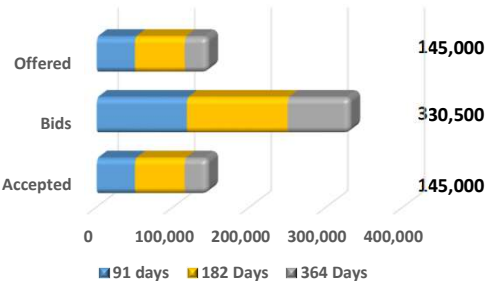


### BILLS AND BONDS YIELDS



Tenure	Bid	Offer	Today	Last Week	Change (bps)
< 91 Days	9.30%	9.15%	9.23%	9.35%	-13
< 182 Days	9.60%	9.40%	9.50%	9.63%	-13
< 364 Days	9.75%	9.60%	9.68%	9.85%	-18
15-Dec-26	10.30%	10.10%	10.20%	10.30%	-10
15-Dec-27	10.95%	10.85%	10.90%	10.90%	0
15-Dec-28	11.30%	11.20%	11.25%	11.40%	-15
15-Sep-29	11.40%	11.30%	11.35%	11.65%	-30
15-Oct-30	11.55%	11.45%	11.50%	11.75%	-25
01-Dec-31	11.70%	11.55%	11.63%	11.90%	-27
01-Oct-32	11.70%	11.60%	11.65%	12.05%	-40
01-Jun-33	11.90%	11.70%	11.80%	12.13%	-33
01-Jan-34	12.00%	11.75%	11.88%	12.30%	-43
15-Mar-35	N/A	N/A	N/A	N/A	N/A
15-Aug-39	N/A	N/A	N/A	N/A	N/A
01-Jan-41	N/A	N/A	N/A	N/A	N/A

### T-BILL AUCTION (LKR MN)

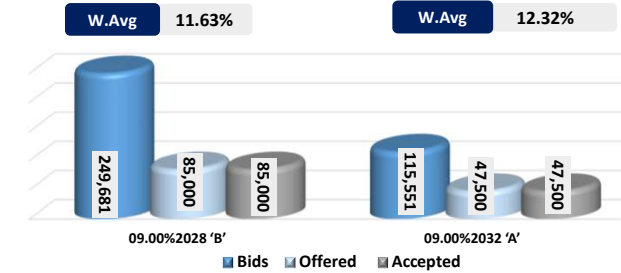


Auction Date: 20-Nov-24

Settlement Date: 22-Nov-24

91 days	9.30%	▼	-5 bps
184 days	9.60%	▼	-4 bps
364 days	9.78%	▼	-10 bps

### T-BOND AUCTION (LKR MN)



### MATURITY TABLE (LKR MN)

