



First Capital
A Janashakti Group Company

DAILY FIXED INCOME & UNIT TRUST

December 17, 2024

"Yield curve dips from the belly end"

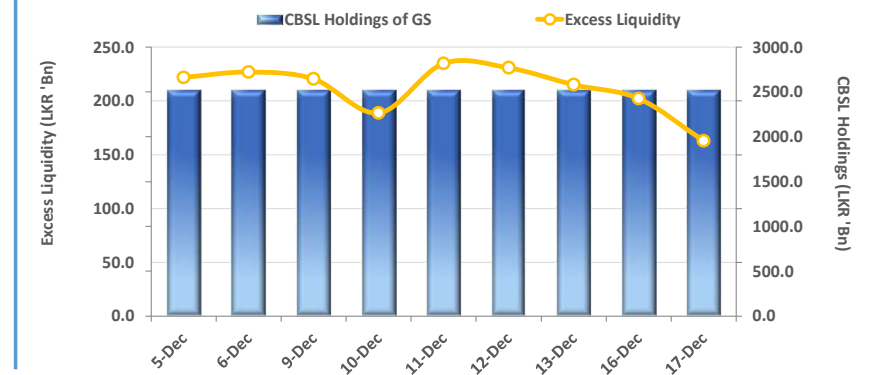
The secondary market yield curve experienced slight buying interest in the belly end of the curve, where it showed a slight dip. The trades were predominantly centered around the 2028 maturities. Amongst the traded maturities, 15.09.27 and 15.12.27 traded in the range of 9.96% - 9.90%. The 2028 maturities namely 15.02.28 traded between 10.15% to 10.13%, whilst 15.03.28, 01.05-28, 01.07.28 and 15.12.28 maturities were traded at the rates of 10.15%, 10.25%, 10.35% and 10.45%, respectively. Furthermore, 15.09.29, 01.12.31 and 01.06.33 traded at the rates of 10.70%, 11.35% and 11.42% respectively. During the week ending 13th Dec-24, the AWPLR continued its downward trajectory, experiencing a decline of 27bps to 8.82%. Moreover, foreign holdings in government securities decreased by 3.1%WoW and registered at LKR 66.1Bn as of 12th Dec-24. Meanwhile, on the external front, the LKR continued to depreciate against the USD for the 2nd consecutive day, closing at LKR 290.76/USD, compared to LKR 290.32/USD recorded the previous day. Additionally, the LKR depreciated against other major currencies including the GBP, EUR, JPY, CNY, and AUD. CBSL holdings of government securities remained unchanged, closing at LKR 2,515.62Bn today. Overnight liquidity in the banking system further contracted to LKR 162.84Bn from LKR 202.12Bn recorded the previous day.

UNIT TRUSTS

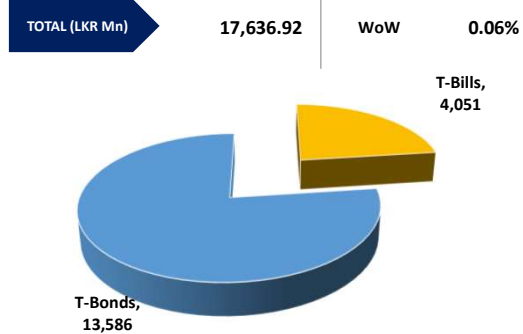
16-Dec-24

First Capital Unit Trust Funds		Sell Price	Buy Price	Avg. Yield
		LKR	LKR	
First Capital Money Market Fund	FCMMF	3,269.43	3,269.43	9.36%
First Capital Gilt Edge Fund	FCGEF	2,468.24	2,468.24	8.17%
First Capital Wealth Fund	FCWF	2,033.56	2,033.51	26.87%
First Capital Equity Fund	FCEF	3,004.80	2,959.73	31.56%
First Capital Money Plus Fund	FCMPF	1,057.65	1,057.65	8.54%

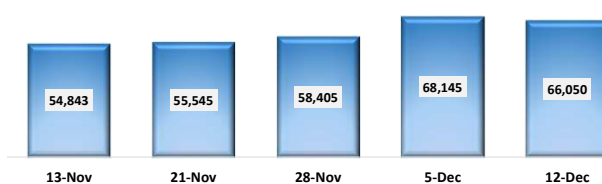
EXCESS LIQUIDITY AND CBSL HOLDINGS



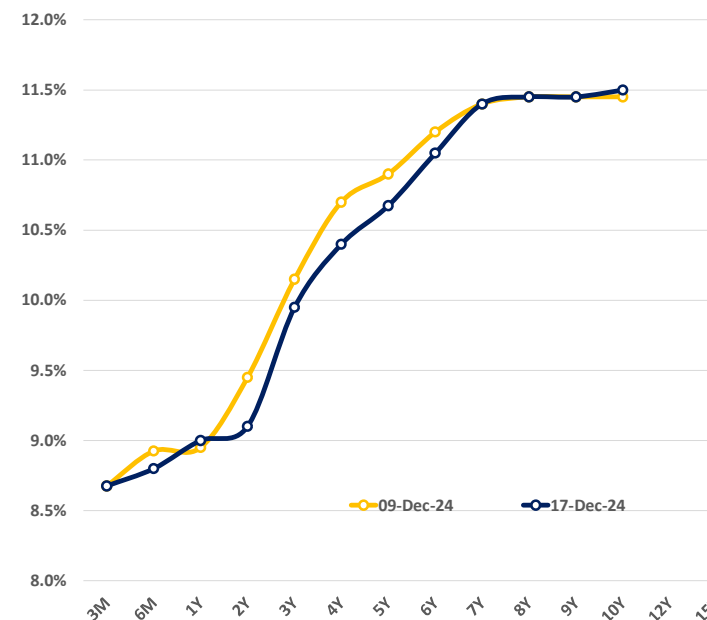
OUTSTANDING STOCK [GSEC]



FOREIGN HOLDING (LKR MN)

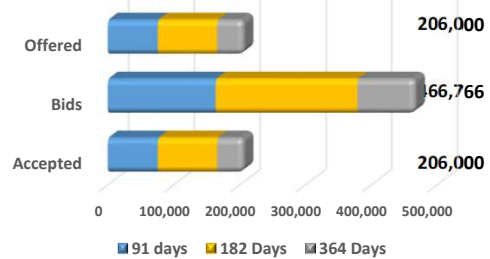


BILLS AND BONDS YIELDS



Tenure	Bid	Offer	Today	Last Week	Change (bps)
< 91 Days	8.70%	8.65%	8.68%	8.68%	0
< 182 Days	8.85%	8.75%	8.80%	8.93%	-13
< 364 Days	9.05%	8.95%	9.00%	8.95%	+5
15-Dec-26	9.20%	9.00%	9.10%	9.45%	-35
15-Dec-27	10.00%	9.90%	9.95%	10.15%	-20
15-Dec-28	10.45%	10.35%	10.40%	10.70%	-30
15-Sep-29	10.70%	10.65%	10.68%	10.90%	-23
15-Oct-30	11.10%	11.00%	11.05%	11.20%	-15
01-Dec-31	11.45%	11.35%	11.40%	11.40%	0
01-Oct-32	11.50%	11.40%	11.45%	11.45%	0
01-Jun-33	11.50%	11.40%	11.45%	11.45%	0
01-Jan-34	11.60%	11.40%	11.50%	11.45%	+5
15-Mar-35	11.60%	11.50%	N/A	N/A	N/A
15-Aug-39	N/A	N/A	N/A	N/A	N/A
01-Jan-41	N/A	N/A	N/A	N/A	N/A

T-BILL AUCTION (LKR MN)



Auction Date: 11-Dec-24

Settlement Date: 13-Dec-24

91 days	8.69%	▼	-4 bps
184 days	8.88%	▼	-6 bps
364 days	9.07%	▼	-1 bps

T-BOND AUCTION (LKR MN)

Auction Date: 12-Dec-24

W.Avg: 10.75%



MATURITY TABLE (LKR MN)

Week ending: 20-Dec-24

