



First Capital
A Jansinath Group Company




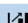

DAILY FIXED INCOME & UNIT TRUST

January 29, 2025

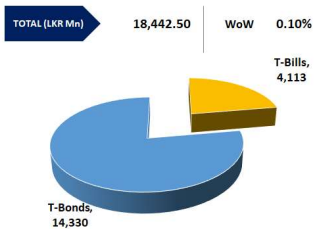
“Increased activity emerges post auction”

Today's Treasury Bill auction saw a sharp decline in rates across the board. The CBSL raised a total of LKR 182.5Bn with the total offered amount being fully accepted across all three maturities. The 03M T-Bill was fully subscribed at LKR 42.5Bn, the 06M T-Bill was fully subscribed at the offered amount of LKR 60.0Bn, and the 1 Yr T-Bill was fully accepted at LKR 80.0Bn. The weighted average yield rates saw declines, where the 03M bill saw a decline of 19bps at 7.93%, the 06M bill saw a decline of 16bps at 8.09%, and the 1 Yr bill saw a decline of 16bps at 8.47%. The secondary market yield curve experienced high activity amidst moderate trading volumes. Notable trades were amongst the 2027, 2028, 2029, and 2030 maturities. On the short end of the curve, the 15.01.27, and 01.05.27 traded at rates of 9.15%, and 9.65% - 9.55%, respectively. On the belly end of the curve, 15.01.28, 15.02.28, and 15.03.28 traded between rates of 10.18% - 10.05%. Similarly, 01.05.28, and 01.07.28 traded between 10.35% - 10.25%, while 15.10.28, and 15.12. 28 traded between 10.45% - 10.38%, 15.09.29 traded between rates of 10.88% - 10.85%. The 15.05.30, 15.10.30, and 01.07.32 maturities traded between rates of 11.15% - 11.10%, 11.30%, and 11.45%, respectively. On the external front, the LKR appreciated against the USD closing at LKR 297.9/USD compared to LKR 298.5/USD recorded the previous day. CBSL holdings of government securities remained unchanged, closing at LKR 2,511.92Bn today. Overnight liquidity in the banking system expanded to LKR 184.05Bn from LKR 158.86Bn recorded the previous day.

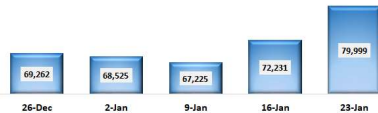
UNIT TRUSTS

First Capital Unit Trust Funds			Sell Price	Buy Price	Avg. Yield
			LKR	LKR	
First Capital Money Market Fund	FCMMF		3,304.89	3,304.89	9.29%
First Capital Gilt Edge Fund	FCGEF		2,491.56	2,491.56	7.65%
First Capital Wealth Fund	FCWF		2,055.60	2,055.55	15.19%
First Capital Equity Fund	FCEF		3,351.10	3,300.83	41.97%
First Capital Money Plus Fund	FCMPF		1,068.70	1,068.70	8.85%

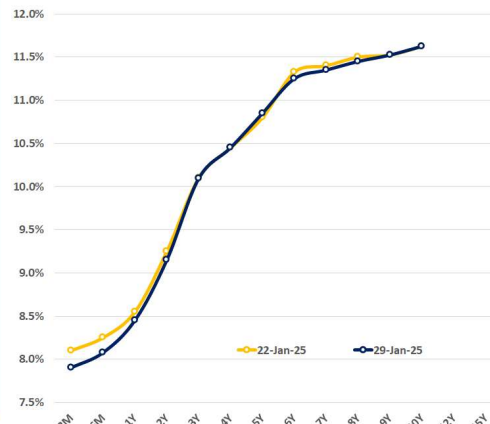
OUTSTANDING STOCK [GSEC]



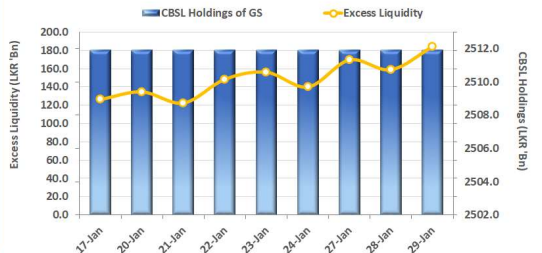
FOREIGN HOLDING (LKR MN) | WoW 10.75%



BILLS AND BONDS YIELDS

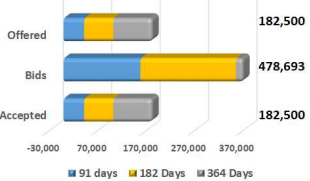


EXCESS LIQUIDITY AND CBSL HOLDINGS



Tenure		Bid	Offer	Today	Last Week	Change (bps)
< 91 Days	< 3M	8.00%	7.80%	7.90%	8.10%	-20
< 182 Days	< 6M	8.15%	8.00%	8.08%	8.25%	-18
< 364 Days	< 1Y	8.50%	8.40%	8.45%	8.55%	-10
15-Jan-27	< 2Y	9.20%	9.10%	9.15%	9.25%	-10
15-Feb-28	< 3Y	10.15%	10.04%	10.10%	10.10%	-0
15-Dec-28	< 4Y	10.50%	10.40%	10.45%	10.45%	0
15-Sep-29	< 5Y	10.90%	10.80%	10.85%	10.80%	+5
15-Oct-30	< 6Y	11.30%	11.20%	11.25%	11.33%	-8
01-Dec-31	< 7Y	11.40%	11.30%	11.35%	11.40%	-5
01-Oct-32	< 8Y	11.50%	11.40%	11.45%	11.50%	-5
01-Jun-33	< 9Y	11.60%	11.45%	11.53%	11.53%	0
01-Jan-34	< 10Y	11.75%	11.50%	11.63%	11.63%	0
15-Mar-35	< 12Y	N/A	N/A	N/A	N/A	N/A
15-Aug-39	< 15Y	N/A	N/A	N/A	N/A	N/A
01-Jan-41	< 20Y	N/A	N/A	N/A	N/A	N/A

T-BILL AUCTION (LKR MN)



Auction Date 29-Jan-25

Settlement Date 31-Jan-25

91 days	7.93%	▼	-19 bps
184 days	8.09%	▼	-16 bps
364 days	8.47%	▼	-16 bps

T-BOND AUCTION (LKR MN)

Auction Date 30-Jan-25



MATURITY TABLE (LKR MN)

Week ending 7-Feb-25

