



DAILY FIXED INCOME & UNIT TRUST

February 6, 2025

"Secondary market at a standstill"

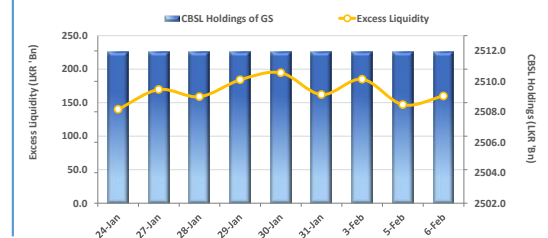
The secondary market experienced limited volumes, amidst the lack of market activity, the secondary market yield curve remained broadly unchanged. Market trades were limited, and amongst the traded maturities, 15.10.27 traded at 9.80%, at the short end. At the belly end of the curve, 01.05.28, 15.10.28, 15.06.29, 15.09.29, 15.05.30, 15.03.31, and 01.07.32 were traded at 10.28%, 10.40%, 10.85%, 10.82%, 11.15%, 11.43%, and 11.45% respectively. On the external front, the LKR appreciated slightly against the USD, closing at LKR 298.93/USD compared to LKR 299.14/USD recorded the previous day. CBSL holdings of government securities remained unchanged, closing at LKR 2,511.92Bn today. Overnight liquidity in the banking system expanded to LKR 159.89Bn from LKR 146.95Bn recorded the previous day.

UNIT TRUSTS

05-Feb-25

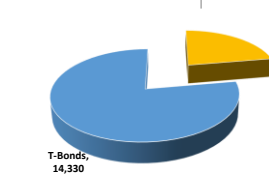
First Capital Unit Trust Funds		Sell Price	Buy Price	Avg. Yield
		LKR	LKR	
First Capital Money Market Fund	FCMMF	3,311.41	3,311.41	8.99%
First Capital Gilt Edge Fund	FCGEF	2,495.59	2,495.59	7.41%
First Capital Wealth Fund	FCWF	2,060.45	2,060.40	15.11%
First Capital Equity Fund	FCEF	3,254.79	3,205.97	37.89%
First Capital Money Plus Fund	FCMPF	1,070.78	1,070.78	8.88%

EXCESS LIQUIDITY AND CBSL HOLDINGS

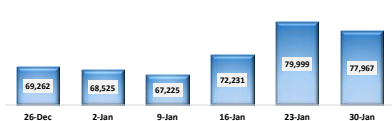


OUTSTANDING STOCK [GSEC]

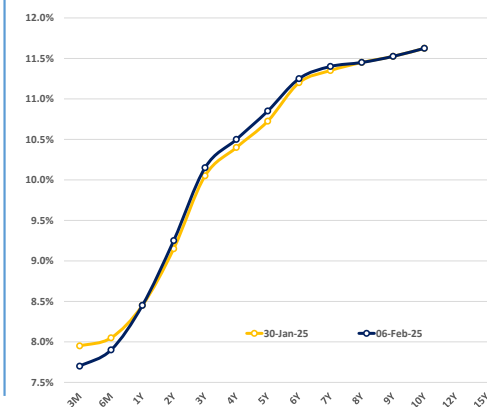
TOTAL (LKR Mn) ***** WoW 0.01%



FOREIGN HOLDING (LKR MN) WoW -2.54%

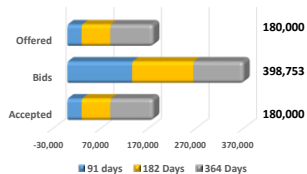


BILLS AND BONDS YIELDS



Tenure		Bid	Offer	Today	Last Week	Change (bps)
< 91 Days	< 3M	7.75%	7.65%	7.70%	7.95%	-25
< 182 Days	< 6M	7.95%	7.85%	7.90%	8.05%	-15
< 364 Days	< 1Y	8.50%	8.40%	8.45%	8.45%	0
15-Jan-27	< 2Y	9.30%	9.20%	9.25%	9.15%	+10
15-Feb-28	< 3Y	10.20%	10.10%	10.15%	10.05%	+10
15-Dec-28	< 4Y	10.55%	10.45%	10.50%	10.40%	+10
15-Dec-29	< 5Y	10.90%	10.80%	10.85%	10.73%	+13
15-Oct-30	< 6Y	11.30%	11.20%	11.25%	11.20%	+5
01-Dec-31	< 7Y	11.45%	11.35%	11.40%	11.35%	+5
01-Oct-32	< 8Y	11.50%	11.40%	11.45%	11.45%	0
01-Jun-33	< 9Y	11.60%	11.45%	11.53%	11.53%	0
01-Jan-34	< 10Y	11.75%	11.50%	11.63%	11.63%	0
15-Mar-35	< 12Y	N/A	N/A	N/A	N/A	N/A
15-Aug-39	< 15Y	N/A	N/A	N/A	N/A	N/A
01-Jan-41	< 20Y	N/A	N/A	N/A	N/A	N/A

T-BILL AUCTION (LKR MN)



Auction Date 5-Feb-25
Settlement Date 7-Feb-25

91 days	7.79%	▼	-14 bps
184 days	8.00%	▼	-9 bps
364 days	8.43%	▼	-4 bps

T-BOND AUCTION (LKR MN)

Auction Date 30-Jan-25
W.Avg 10.73% W.Avg 11.47%



MATURITY TABLE (LKR MN)

Week ending 14-Feb-25

