



First Capital
A Jeeva Group Company

DAILY FIXED INCOME & UNIT TRUST

February 13, 2025

"Buying interest rises following the T-Bond auction"

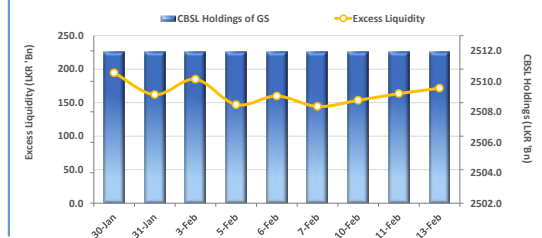
Today's bond auction saw increased levels of demand and buying interest on both 2028 and 2029 maturities, as the Central Bank of Sri Lanka raised a total of LKR 67.58n. 2028 maturity was fully accepted where LKR 37.58n was accepted from total bids received of LKR 78.88n and the 01.09.2028 bond closed at a weighted average yield rate of 10.31%. LKR 30.00n was accepted from the total bids received amount of LKR 107.28n on the 2030 maturity. The 15.10.2030 bond accepted at a weighted average yield rate of 11.23%. Following the bond auction, buying interest increased in the secondary market, which saw moderate volumes and heightened activity. On the traded maturities at the short end 15.05.27 traded at the range of 9.45% to 9.40% whilst both 15.09.27 and 15.10.27 traded at the range of 10.75% to 10.70%. Towards the belly end of the curve, 15.02.28 and 15.03.28 traded at the range of 10.15% to 10.10% whilst 01.05.28 traded between 10.23% to 10.17%. Meanwhile, all 01.07.28, 15.09.28, 15.10.28 and 15.12.28 traded at the range of 10.45% to 10.30%. 5-year bond, 15.09.29 traded in the range of 10.85% to 10.80% whilst both 15.05.30 and 15.10.30 traded in the range of 11.20% to 11.05%. On the external front, the LKR appreciated against the USD, closing at LKR 297.02/USD compared to LKR 297.52/USD recorded the previous Tuesday. CBSL holdings of government securities remained unchanged, closing at LKR 2,511.928n today. Overnight liquidity in the banking system expanded to LKR 171.558n from LKR 163.508n recorded the previous day.

UNIT TRUSTS

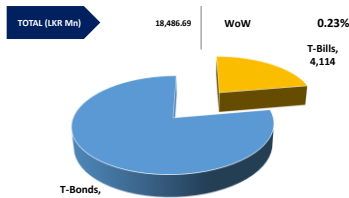
12-Feb-25

First Capital Unit Trust Funds		Sell Price	Buy Price	Avg. Yield
		LKR	LKR	
First Capital Money Market Fund	FCMMF	3,316.99	3,316.99	8.79%
First Capital Gilt Edge Fund	FCGEF	2,499.21	2,499.21	7.56%
First Capital Wealth Fund	FCWF	2,064.10	2,064.05	15.01%
First Capital Equity Fund	FCEF	3,254.27	3,205.46	37.87%
First Capital Money Plus Fund	FCMPF	1,072.58	1,072.58	8.77%

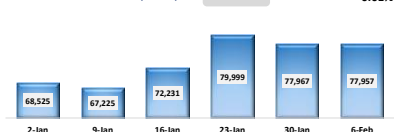
EXCESS LIQUIDITY AND CBSL HOLDINGS



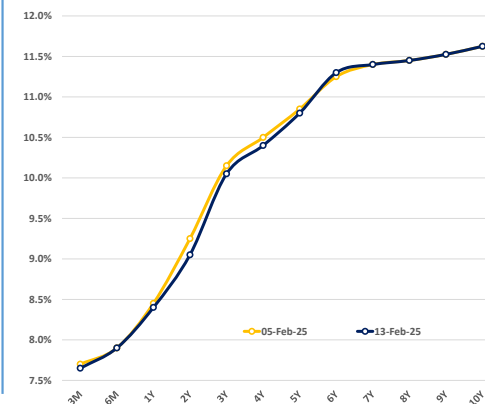
OUTSTANDING STOCK [GSEC]



FOREIGN HOLDING (LKR MN)

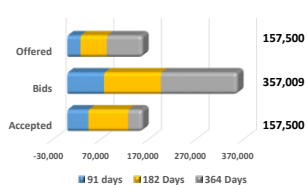


BILLS AND BONDS YIELDS



Tenure		Bid	Offer	Today	Last Week	Change (bps)
< 91 Days	< 3M	7.70%	7.60%	7.65%	7.70%	-5
< 182 Days	< 6M	7.95%	7.85%	7.90%	7.90%	0
< 364 Days	< 1Y	8.45%	8.35%	8.40%	8.45%	-5
15-Jan-27	< 2Y	9.10%	9.00%	9.05%	9.25%	-20
15-Feb-28	< 3Y	10.10%	10.00%	10.05%	10.15%	-10
15-Dec-28	< 4Y	10.45%	10.35%	10.40%	10.50%	-10
15-Dec-29	< 5Y	10.85%	10.75%	10.80%	10.85%	-5
15-Oct-30	< 6Y	11.35%	11.25%	11.30%	11.25%	+5
01-Dec-31	< 7Y	11.45%	11.35%	11.40%	11.40%	0
01-Oct-32	< 8Y	11.50%	11.40%	11.45%	11.45%	0
01-Jun-33	< 9Y	11.60%	11.45%	11.53%	11.53%	0
01-Jan-34	< 10Y	11.75%	11.50%	11.63%	11.63%	0
15-Mar-35	< 12Y	N/A	N/A	N/A	N/A	N/A
15-Aug-39	< 15Y	N/A	N/A	N/A	N/A	N/A
01-Jan-41	< 20Y	N/A	N/A	N/A	N/A	N/A

T-BILL AUCTION (LKR MN)



Auction Date	11-Feb-25
Settlement Date	14-Feb-25

91 days	7.69%	▼	-10	bps
184 days	7.94%	▼	-6	bps
364 days	8.42%	▼	-1	bps

T-BOND AUCTION (LKR MN)



MATURITY TABLE (LKR MN)

Week ending	21-Feb-25
T-Bill	109,268