



DAILY FIXED INCOME & UNIT TRUST



February 27, 2025

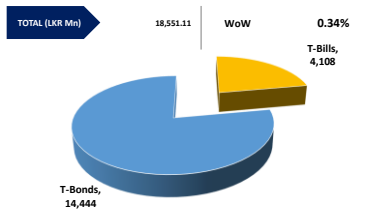
"Bond auction yields experience slight declines and full acceptance"

Today's bond auction saw a slight decline in rates as the CBSL raised LKR 27.58bn, yielding full acceptance across both maturities offered. The 15.06.2029 maturity closed at a weighted average yield rate of 10.63% with LKR 15.08bn being fully accepted, whilst the 15.12.2032 maturity closed at a weighted average yield rate of 11.41% with LKR 12.58bn being fully accepted. The secondary market yield curve witnessed slight buying interest and moderate volumes amidst the bond auction. Notable trades were amongst the 2028, 2029, and 2030 maturities. On the belly end of the curve, 15.02.28, 01.05.28, 01.07.28, and 01.09.28 traded at rates of 10.00%, 10.10%, 10.22%, and 10.30%, respectively. Similarly, 15.06.29, 15.07.29, and 15.09.29 traded at rates of 10.65%, 10.70%, and 10.70%, respectively. The 15.05.30 and 15.10.30 maturities traded at rates of 10.90% and 11.07%, respectively. On the external front, the LKR appreciated against the USD, closing at LKR 295.72/USD compared to LKR 295.75/USD recorded the previous day. CBSL holdings of government securities remained unchanged, closing at LKR 2,511.92bn today. Overnight liquidity in the banking system expanded to LKR 171.62bn from LKR 151.07bn recorded the previous day.

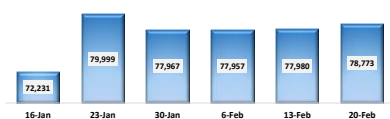
UNIT TRUSTS

First Capital Unit Trust Funds		Sell Price	Buy Price	Avg. Yield
		LKR	LKR	
First Capital Money Market Fund	FCMMF	3,328.11	3,328.11	8.73%
First Capital Gilt Edge Fund	FCGEF	2,506.11	2,506.11	7.10%
First Capital Wealth Fund	FCWF	2,073.27	2,073.22	14.93%
First Capital Equity Fund	FCEF	3,242.46	3,193.82	37.37%
First Capital Money Plus Fund	FCMPF	1,076.24	1,076.24	8.93%

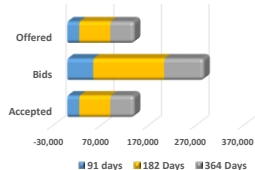
OUTSTANDING STOCK [GSEC]



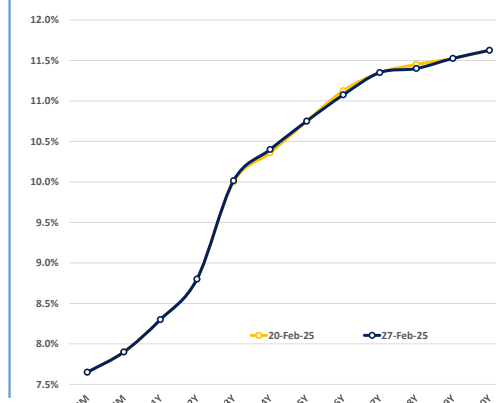
FOREIGN HOLDING (LKR MN) WoW 1.02%



T-BILL AUCTION (LKR MN)



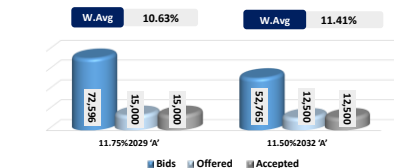
BILLS AND BONDS YIELDS



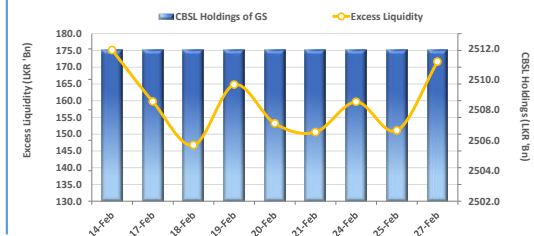
Auction Date	25-Feb-25
Settlement Date	28-Feb-25

91 days	7.57%	▼	-4 bps
184 days	7.87%	▼	-3 bps
364 days	8.35%	▼	-1 bps

T-BOND AUCTION (LKR MN) Auction Date 27-Feb-25



EXCESS LIQUIDITY AND CBSL HOLDINGS



Tenure		Bid	Offer	Today	Last Week	Change (bps)
< 91 Days	< 3M	7.70%	7.60%	7.65%	7.65%	0
< 182 Days	< 6M	7.95%	7.85%	7.90%	7.90%	0
< 364 Days	< 1Y	8.35%	8.25%	8.30%	8.30%	0
15-Jan-27	< 2Y	8.85%	8.75%	8.80%	8.80%	0
15-Feb-28	< 3Y	10.05%	9.98%	10.02%	10.00%	+1
15-Dec-28	< 4Y	10.45%	10.35%	10.40%	10.36%	+4
15-Dec-29	< 5Y	10.80%	10.70%	10.75%	10.75%	0
15-Oct-30	< 6Y	11.10%	11.05%	11.08%	11.13%	-5
01-Dec-31	< 7Y	11.40%	11.30%	11.35%	11.35%	0
01-Oct-32	< 8Y	11.45%	11.35%	11.40%	11.45%	-5
01-Jun-33	< 9Y	11.60%	11.45%	11.53%	11.53%	0
01-Jan-34	< 10Y	11.75%	11.50%	11.63%	11.63%	0
15-Mar-35	< 12Y	N/A	N/A	N/A	N/A	N/A
15-Aug-39	< 15Y	N/A	N/A	N/A	N/A	N/A
01-Jan-41	< 20Y	N/A	N/A	N/A	N/A	N/A

MATURITY TABLE (LKR MN)

