

DAILY FIXED INCOME & UNIT TRUST



April 11, 2025

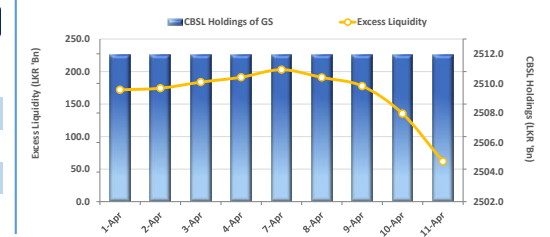
"Mixed activity arises following the T-Bond auction"

At the close of the week, the secondary market yield curve experienced mixed trading activity generating low volumes, following yesterday's T-Bond auction. In the belly-end of the curve, the 15.09.2027 and 15.03.2028 maturities were traded at rates of 9.78% and 10.05%, respectively. Meanwhile, the 15.10.2028 and 15.12.2028 maturities recorded trades within range of 10.25% to 10.30%. Further along the curve, 15.09.2029 and 15.12.2029 maturities traded between 10.55% to 10.64%. In the forex market, the LKR strengthened against the greenback, closing at LKR 298.9/USD, compared to the previous day's rate of 301.2/USD. Conversely, LKR depreciated against other major currencies such as GBP, EUR, JPY and AUD. Meanwhile, overnight liquidity in the banking system decreased to LKR 61.7Bn, down from LKR 135.3Bn in the prior session.

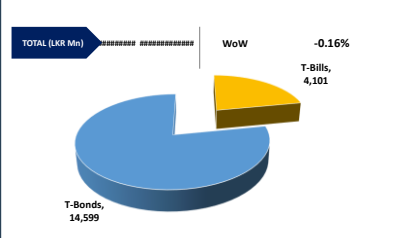
UNIT TRUSTS

First Capital Unit Trust Funds			Sell Price	Buy Price	Avg. Yield
			LKR	LKR	
First Capital Money Market Fund	FCMMF		3,361.64	3,361.64	8.12%
First Capital Gilt Edge Fund	FCGEF		2,526.72	2,526.72	6.98%
First Capital Wealth Fund	FCWF		2,109.14	2,109.09	9.53%
First Capital Equity Fund	FCEF		3,213.90	3,165.69	-0.46%
First Capital Money Plus Fund	FCMPF		1,086.84	1,086.84	7.54%

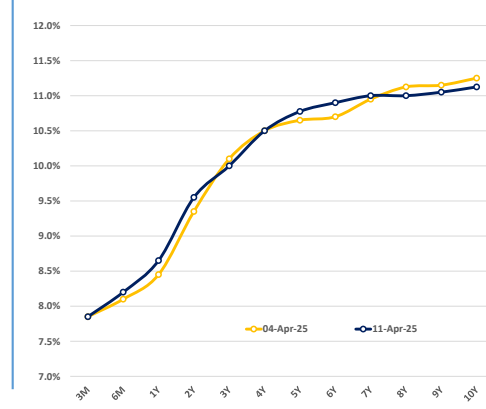
EXCESS LIQUIDITY AND CBSL HOLDINGS



OUTSTANDING STOCK (GSEC)

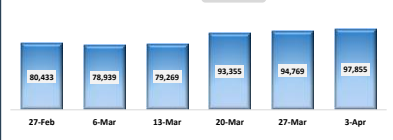


BILLS AND BONDS YIELDS

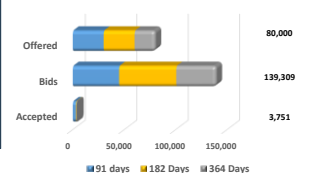


Tenure	Bid	Offer	Today	Last Week	Change (bps)	
< 91 Days	< 3M	8.00%	7.70%	7.85%	7.85%	0
< 182 Days	< 6M	8.30%	8.10%	8.20%	8.10%	+10
< 364 Days	< 1Y	8.70%	8.60%	8.65%	8.45%	+20
01-May-27	< 2Y	9.60%	9.50%	9.55%	9.35%	+20
15-Mar-28	< 3Y	10.05%	9.95%	10.00%	10.10%	-10
15-Jun-29	< 4Y	10.55%	10.45%	10.50%	10.50%	0
15-May-30	< 5Y	10.90%	10.65%	10.78%	10.65%	+13
15-Mar-31	< 6Y	11.00%	10.80%	10.90%	10.70%	+20
07-Dec-32	< 7Y	11.10%	10.90%	11.00%	10.95%	+5
01-Jun-33	< 8Y	11.10%	10.90%	11.00%	11.13%	-13
01-Jan-34	< 9Y	11.20%	10.90%	11.05%	11.15%	-10
15-Mar-35	< 10Y	11.25%	11.00%	11.13%	11.25%	-13
15-Jan-37	< 12Y	N/A	N/A	N/A	N/A	N/A
15-Aug-39	< 15Y	N/A	N/A	N/A	N/A	N/A
01-Jan-41	< 20Y	N/A	N/A	N/A	N/A	N/A

FOREIGN HOLDING (LKR MN)

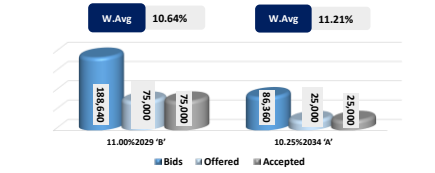


T-BILL AUCTION (LKR MN)



Auction Date	9-Apr-25
Settlement Date	11-Apr-25
91 days	7.59% 0 bps
184 days	7.91% 0 bps
364 days	8.31% 0 bps

T-BOND AUCTION (LKR MN)



MATURITY TABLE (LKR MN)

