



# DAILY FIXED INCOME & UNIT TRUST

April 28, 2025

## "CBSL T-Bond auction concludes with 3.0x oversubscription"

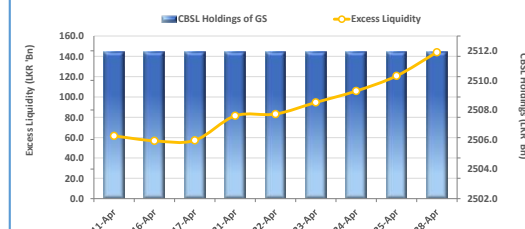
Today, CBSL conducted a T-bond auction worth LKR 155.0Bn, raising a total of LKR 60.0Bn through the 15.06.2029 maturity, which recorded a weighted average yield of 10.30%. Additionally, LKR 55.0Bn and LKR 40.0Bn were raised through the 15.03.2031 and 15.03.2035 maturities, respectively, at weighted average yields of 10.96% and 11.22%. The auction was fully subscribed, signaling an improved investor confidence. Following the auction, the secondary market saw moderate trading volumes with limited activity. The 15.06.2029, 15.09.2029, and 15.12.2029 maturities traded within a range of 10.30% to 10.45%. Notably, the 15.09.2027 maturity attracted foreign buying interest, with trades occurring between 9.60% and 9.50%. Moreover, recent data published by the CBSL revealed that the AWPR for the week ending 25th Apr-25 decreased by 5bps, settling at 8.39%, showcasing a notable reduction from the previous week. In the forex market, the LKR strengthened against the greenback, closing at LKR 299.7/USD, compared to the previous day's rate of 300.1/USD. Meanwhile, overnight liquidity in the banking system increased to LKR 144.0Bn, up from LKR 120.8Bn in the prior session.

### UNIT TRUSTS

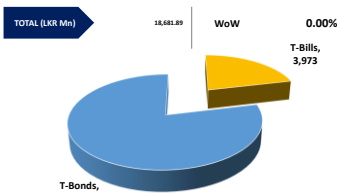
First Capital Unit Trust Funds			Sell Price	Buy Price	Avg. Yield
			LKR	LKR	
First Capital Money Market Fund	FCMMF		3,374.35	3,374.35	8.14%
First Capital Gilt Edge Fund	FCGEF		2,535.17	2,535.17	7.11%
First Capital Wealth Fund	FCWF		2,116.45	2,116.40	7.61%
First Capital Equity Fund	FCEF		3,253.52	3,204.72	0.76%
First Capital Money Plus Fund	FCMPF		1,090.71	1,090.71	9.25%

27-Apr-25

### EXCESS LIQUIDITY AND CBSL HOLDINGS



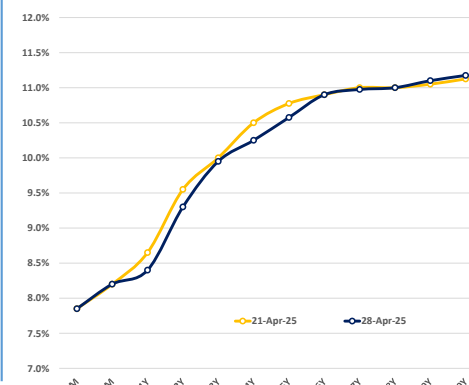
### OUTSTANDING STOCK [GSEC]



### FOREIGN HOLDING (LKR MN)

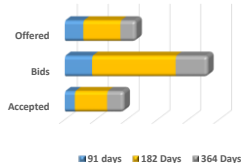


### BILLS AND BONDS YIELDS



Tenure		Bid	Offer	Today	Last Week	Change (bps)
< 91 Days	< 3M	8.00%	7.70%	7.85%	7.85%	0
< 182 Days	< 6M	8.30%	8.10%	8.20%	8.20%	0
< 364 Days	< 1Y	8.50%	8.30%	8.40%	8.65%	-25
01-May-27	< 2Y	9.40%	9.20%	9.30%	9.55%	-25
15-May-28	< 3Y	10.00%	9.90%	9.95%	10.00%	-5
15-Jun-29	< 4Y	10.30%	10.20%	10.25%	10.50%	-25
15-May-30	< 5Y	10.65%	10.50%	10.58%	10.78%	-20
15-Mar-31	< 6Y	10.95%	10.85%	10.90%	10.90%	0
15-Dec-32	< 7Y	11.05%	10.90%	10.98%	11.00%	-3
01-Jun-33	< 8Y	11.10%	10.90%	11.00%	11.00%	0
01-Jan-34	< 9Y	11.20%	11.00%	11.10%	11.05%	+5
15-Mar-35	< 10Y	11.25%	11.10%	11.18%	11.13%	+5
15-Jan-37	< 12Y	N/A	N/A	N/A	N/A	N/A
15-Aug-39	< 15Y	N/A	N/A	N/A	N/A	N/A
01-Jan-41	< 20Y	N/A	N/A	N/A	N/A	N/A

### T-BILL AUCTION (LKR MN)



### Auction Date: 23-Apr-25

### Settlement Date: 25-Apr-25

91 days	7.62%	▲	+3 bps
184 days	7.98%	▲	+2 bps
364 days	8.29%	▼	-2 bps

### T-BOND AUCTION (LKR MN)

### Auction Date: 28-Apr-25



### MATURITY TABLE (LKR MN)

### Week ending: 2-May-25

