



First Capital
A Jansonsbank Group Company

DAILY FIXED INCOME & UNIT TRUST

July 9, 2025

"The secondary market witnesses yet another quiet day"

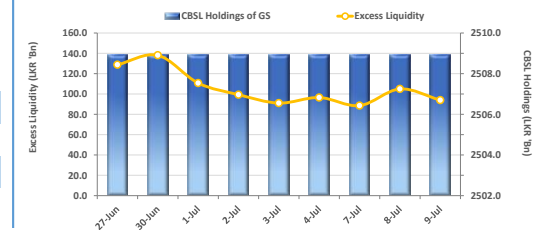
Today carried forward the subdued tone of yesterday, with the secondary market remaining lackluster. While there was a slight tilt toward selling sentiment, overall activity and volumes remained largely stagnant. Amongst the few trades that took place today, 01.09.2028 and 15.10.2028 both traded at 8.95%. Further ahead on the yield curve, 15.10.2029 traded at 9.45% while 15.12.2029 was seen changing hands at 9.50%. In the forex market, the LKR depreciated against the greenback, closing at LKR 300.9/USD, compared to the previously seen rate of LKR 300.6/USD. Meanwhile, overnight liquidity in the banking system contracted to LKR 93.9Bn from the previously seen level of LKR 105.0Bn.

UNIT TRUSTS

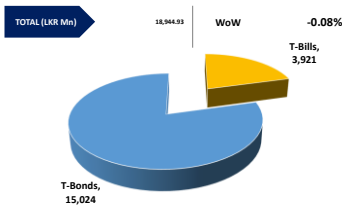
08-Jul-25

First Capital Unit Trust Funds			Sell Price	Buy Price	Avg. Yield
			LKR	LKR	
First Capital Money Market Fund	FCMMF		3,429.29	3,429.29	8.15%
First Capital Gilt Edge Fund	FCGEF		2,570.97	2,570.97	7.62%
First Capital Wealth Fund	FCWF		2,155.43	2,155.38	9.39%
First Capital Equity Fund	FCEF		3,661.15	3,606.23	13.39%
First Capital Money Plus Fund	FCMPF		1,105.64	1,105.64	6.71%

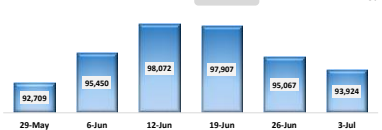
EXCESS LIQUIDITY AND CBSL HOLDINGS



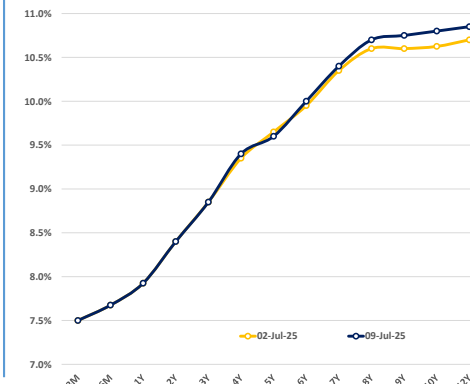
OUTSTANDING STOCK [GSEC]



FOREIGN HOLDING (LKR MN)

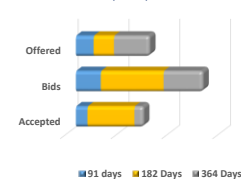


BILLS AND BONDS YIELDS



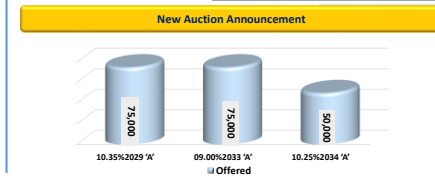
Tenure		Bid	Offer	Today	Last Week	Change (bps)
< 91 Days	< 3M	7.55%	7.45%	7.50%	7.50%	0
< 182 Days	< 6M	7.75%	7.60%	7.68%	7.68%	0
< 364 Days	< 1Y	8.00%	7.85%	7.93%	7.93%	0
01-May-27	< 2Y	8.45%	8.35%	8.40%	8.40%	0
01-Jul-28	< 3Y	8.90%	8.80%	8.85%	8.85%	0
15-Jun-29	< 4Y	9.45%	9.35%	9.40%	9.35%	+5
15-May-30	< 5Y	9.65%	9.55%	9.60%	9.65%	-5
15-Mar-31	< 6Y	10.05%	9.95%	10.00%	9.95%	+5
15-Dec-32	< 7Y	10.45%	10.35%	10.40%	10.35%	+5
01-Nov-33	< 8Y	10.75%	10.65%	10.70%	10.60%	+10
15-Sep-34	< 9Y	10.80%	10.70%	10.75%	10.60%	+15
15-Mar-35	< 10Y	10.85%	10.75%	10.80%	10.63%	+18
15-Jan-37	< 12Y	10.90%	10.80%	10.70%	10.70%	N/A
15-Aug-39	< 15Y	N/A	N/A	N/A	N/A	N/A
01-Jan-41	< 20Y	N/A	N/A	N/A	N/A	N/A

T-BILL AUCTION (LKR MN)



Auction Date	8-Jul-25
Settlement Date	11-Jul-25
91 days	7.60% ▲ +5 bps
184 days	7.84% ▲ +6 bps
364 days	7.99% ▲ +5 bps

T-BOND AUCTION (LKR MN)



MATURITY TABLE (LKR MN)

