



DAILY FIXED INCOME & UNIT TRUST

July 15, 2025

"Activity stalls as the secondary market hits pause"

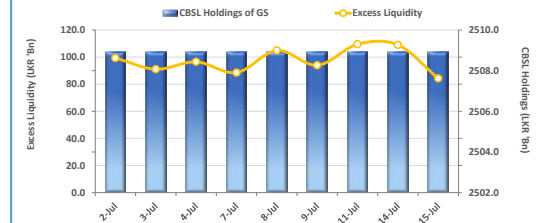
Activity in the secondary market remained rather lethargic today as yesterday's tepid atmosphere continued to hold firm. This resulted in a static yield curve amidst limited volumes. Amongst the few trades that were carried out today, the noteworthy ones were even fewer. At the short end of the yield curve, 01.05.2028 traded at 8.85% while 15.12.2028 traded at 9.00%. Moving ahead on the yield curve, 15.12.2029 was seen changing hands at 9.52%. Finally, 15.09.2034 maturity traded at a rate of 10.88% today. In the forex market, the LKR depreciated against the greenback, closing at LKR 300.9/USD, compared to the previously seen rate of LKR 300.7/USD. Meanwhile, overnight liquidity in the banking system contracted to LKR 84.3Bn from the previously seen level of LKR 109.0Bn.

UNIT TRUSTS

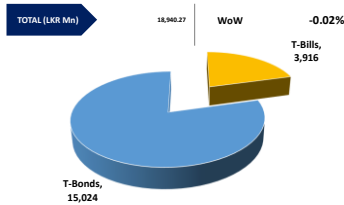
14-Jul-25

First Capital Unit Trust Funds			Sell Price	Buy Price	Avg. Yield
			LKR	LKR	
First Capital Money Market Fund	FCMMF		3,433.87	3,433.87	8.12%
First Capital Gilt Edge Fund	FCGEF		2,573.90	2,573.90	6.96%
First Capital Wealth Fund	FCWF		2,157.26	2,157.21	9.27%
First Capital Equity Fund	FCEF		3,811.98	3,754.80	18.06%
First Capital Money Plus Fund	FCMPF		1,106.90	1,106.90	6.89%

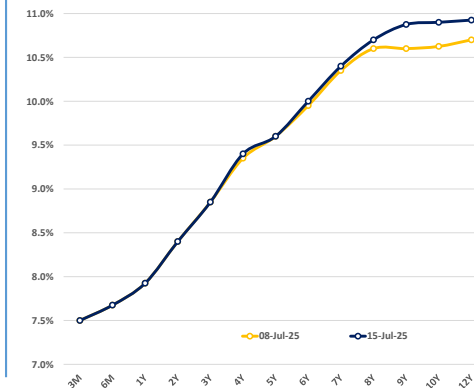
EXCESS LIQUIDITY AND CBSL HOLDINGS



OUTSTANDING STOCK [GSEC]

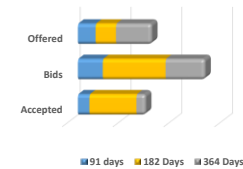


BILLS AND BONDS YIELDS



Tenure		Bid	Offer	Today	Last Week	Change (bps)
< 91 Days	< 3M	7.55%	7.45%	7.50%	7.50%	0
< 182 Days	< 6M	7.75%	7.60%	7.68%	7.68%	0
< 364 Days	< 1Y	8.00%	7.85%	7.93%	7.93%	0
01-May-27	< 2Y	8.45%	8.35%	8.40%	8.40%	0
01-Jul-28	< 3Y	8.90%	8.80%	8.85%	8.85%	0
15-Jun-29	< 4Y	9.45%	9.35%	9.40%	9.35%	+5
15-May-30	< 5Y	9.65%	9.55%	9.60%	9.60%	0
15-Mar-31	< 6Y	10.05%	9.95%	10.00%	9.95%	+5
15-Dec-32	< 7Y	10.45%	10.35%	10.40%	10.35%	+5
01-Nov-33	< 8Y	10.75%	10.65%	10.70%	10.60%	+10
15-Sep-34	< 9Y	10.85%	10.90%	10.88%	10.60%	+28
15-Mar-35	< 10Y	10.85%	10.95%	10.90%	10.63%	+28
15-Jan-37	< 12Y	10.85%	11.00%	10.93%	10.70%	+23
15-Aug-39	< 15Y	N/A	N/A	N/A	N/A	N/A
01-Jan-41	< 20Y	N/A	N/A	N/A	N/A	N/A

T-BILL AUCTION (LKR MN)



Auction Date		8-Jul-25	
Settlement Date		11-Jul-25	
days	7.60%	▲	+5 bps
days	7.84%	▲	+6 bps
days	7.99%	▲	+5 bps

T-BOND AUCTION (LKR MN)



MATURITY TABLE (LKR MN)

