



First Capital
A Jansinhabadi Group Company

DAILY FIXED INCOME & UNIT TRUST

June 30, 2025

"2028 and 2029 maturities draw quiet interest"

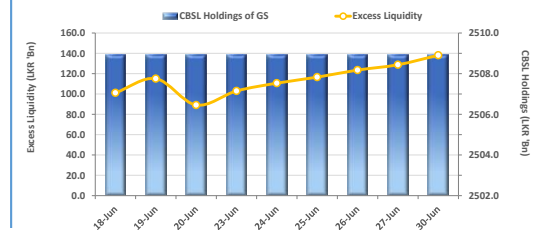
The secondary market showed signs of selective investor interest today, with a noticeable uptick in demand for bonds maturing in 2028 and 2029. While activity in these segments gained some traction, overall market volumes remained measured, suggesting a cautious yet opportunistic approach by market participants. 2028 maturities ranging from 15.02.2028 to 15.12.2028 were seen trading between 8.70% to 8.90%. In terms of 2029 maturities, 15.06.2029, 15.09.2029 and 15.12.2029 changed hands within the 9.35% to 9.42% range. The day's significant transactions were largely confined to these specific segments, highlighting the focused yet cautious sentiment that prevailed through the day. In the forex market, the LKR appreciated marginally against the greenback, closing at LKR 299.96/USD, compared to the previously seen rate of 299.97/USD. Meanwhile, overnight liquidity in the banking system expanded to LKR 138.18n from the previously seen level of LKR 128.88n.

UNIT TRUSTS

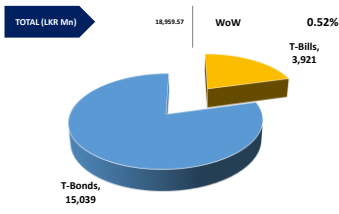
First Capital Unit Trust Funds			Sell Price	Buy Price	Avg. Yield
			LKR	LKR	
First Capital Money Market Fund	FCMMF		3,422.42	3,422.42	8.39%
First Capital Gilt Edge Fund	FCGEF		2,566.22	2,566.22	7.08%
First Capital Wealth Fund	FCWF		2,151.69	2,151.64	9.49%
First Capital Equity Fund	FCEF		3,617.06	3,562.80	12.02%
First Capital Money Plus Fund	FCMPF		1,103.80	1,103.80	6.91%

29-Jun-25

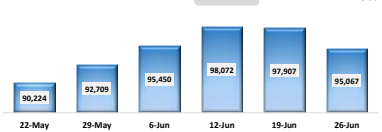
EXCESS LIQUIDITY AND CBSL HOLDINGS



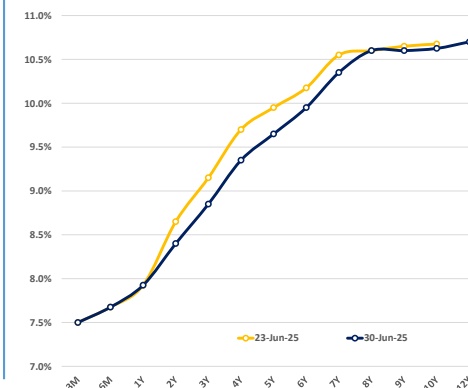
OUTSTANDING STOCK [GSEC]



FOREIGN HOLDING (LKR MN)

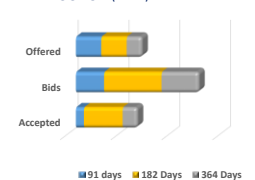


BILLS AND BONDS YIELDS



Tenure		Bid	Offer	Today	Last Week	Change (bps)
< 91 Days	< 3M	7.55%	7.45%	7.50%	7.50%	0
< 182 Days	< 6M	7.75%	7.60%	7.68%	7.68%	0
< 364 Days	< 1Y	8.00%	7.85%	7.93%	7.93%	0
01-May-27	< 2Y	8.45%	8.35%	8.40%	8.65%	-25
01-Jul-28	< 3Y	8.90%	8.80%	8.85%	9.15%	-30
15-Jun-29	< 4Y	9.40%	9.30%	9.35%	9.70%	-35
15-May-30	< 5Y	9.70%	9.60%	9.65%	9.95%	-30
15-Mar-31	< 6Y	10.00%	9.90%	9.95%	10.18%	-23
15-Dec-32	< 7Y	10.40%	10.30%	10.35%	10.55%	-20
01-Nov-33	< 8Y	10.70%	10.50%	10.60%	10.60%	0
15-Sep-34	< 9Y	10.70%	10.50%	10.60%	10.65%	-5
15-Mar-35	< 10Y	10.75%	10.50%	10.63%	10.68%	-5
15-Jan-37	< 12Y	10.80%	10.60%	N/A	N/A	N/A
15-Aug-39	< 15Y	N/A	N/A	N/A	N/A	N/A
01-Jan-41	< 20Y	N/A	N/A	N/A	N/A	N/A

T-BILL AUCTION (LKR MN)



Auction Date: 25-Jun-25

Settlement Date	27-Jun-25
91 days	7.55%
184 days	7.75%
364 days	7.94%

T-BOND AUCTION (LKR MN)



MATURITY TABLE (LKR MN)

