



First Capital
A Jansinhabadi Group Company

DAILY FIXED INCOME & UNIT TRUST

September 2, 2025

"Mixed market activity with focus on 2028 and 2029 maturities"

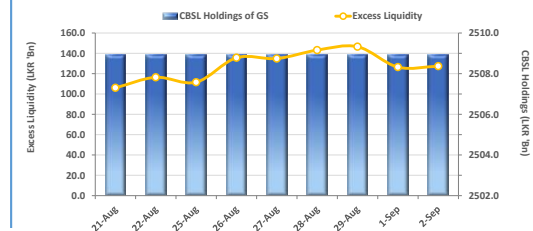
The secondary bond market exhibited a mixed performance, with trading activity concentrated primarily in securities maturing in 2028 and 2029. Within the 2028 segment, interest was observed in the 01.07.2028 and 01.09.2028 maturities, which changed hands within a narrow yield band of 8.98% to 9.00%. Meanwhile, within the 2029 segment, 15.09.2029, 15.10.2029, and 15.12.2029 maturities traded at yields ranging from 9.50% to 9.56%. In the forex market, the LKR appreciated against the greenback, closing at LKR 302.0/USD compared to LKR 302.3/USD seen previously. Meanwhile, overnight liquidity in the banking system expanded marginally to LKR 127.4Bn from the previously seen level of LKR 126.4Bn.

UNIT TRUSTS

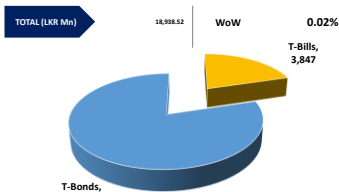
01-Sep-25

First Capital Unit Trust Funds			Sell Price	Buy Price	Avg. Yield
			LKR	LKR	
First Capital Money Market Fund	FCMMF		3,471.39	3,471.39	8.26%
First Capital Gilt Edge Fund	FCGEF		2,598.44	2,598.44	7.05%
First Capital Wealth Fund	FCWF		2,172.44	2,172.39	8.51%
First Capital Equity Fund	FCEF		4,221.15	4,157.83	30.73%
First Capital Money Plus Fund	FCMPF		1,117.45	1,117.45	7.15%

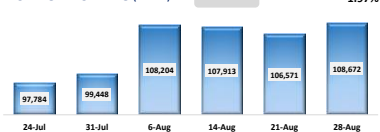
EXCESS LIQUIDITY AND CBSL HOLDINGS



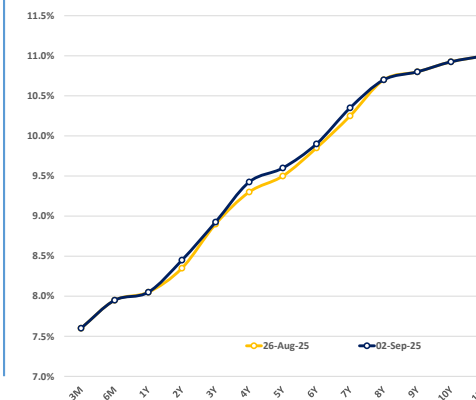
OUTSTANDING STOCK [GSEC]



FOREIGN HOLDING (LKR MN)

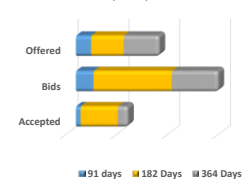


BILLS AND BONDS YIELDS



Tenure		Bid	Offer	Today	Last Week	Change (bps)
< 91 Days	< 3M	7.65%	7.55%	7.60%	7.60%	0
< 182 Days	< 6M	8.00%	7.90%	7.95%	7.95%	0
< 364 Days	< 1Y	8.10%	8.00%	8.05%	8.05%	0
01-May-27	< 2Y	8.50%	8.40%	8.45%	8.35%	+10
01-Jul-28	< 3Y	8.95%	8.90%	8.93%	8.90%	+3
15-Jun-29	< 4Y	9.45%	9.40%	9.43%	9.30%	+13
15-May-30	< 5Y	9.65%	9.55%	9.60%	9.50%	+10
15-Mar-31	< 6Y	9.95%	9.85%	9.90%	9.85%	+5
15-Dec-32	< 7Y	10.40%	10.30%	10.35%	10.25%	+10
01-Nov-33	< 8Y	10.75%	10.65%	10.70%	10.70%	0
15-Sep-34	< 9Y	10.85%	10.75%	10.80%	10.80%	0
15-Mar-35	< 10Y	11.00%	10.85%	10.93%	10.93%	0
15-Jan-37	< 12Y	11.10%	10.90%	11.00%	11.00%	0
15-Aug-39	< 15Y	N/A	N/A	N/A	N/A	N/A
01-Jan-41	< 20Y	N/A	N/A	N/A	N/A	N/A

T-BILL AUCTION (LKR MN)



Auction Date

27-Aug-25

Settlement Date

29-Aug-25

91 days	7.58%	-1 bps
184 days	7.89%	0 bps
364 days	8.03%	0 bps

T-BOND AUCTION (LKR MN)

Auction Date

12-Aug-25



MATURITY TABLE (LKR MN)

Week ending

5-Sep-25

