



First Capital
A Jansinhabadi Group Company

DAILY FIXED INCOME & UNIT TRUST

September 23, 2025

"Trading softens ahead of policy update"

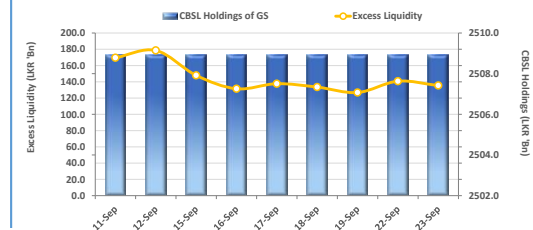
The secondary market navigated a lackluster session, weighed down by thin volumes and mixed investor sentiment. Market participants appear to have adopted a measured stance owing to the impending monetary policy decision set to be announced early tomorrow. Amongst the few noteworthy trades seen today, 01.10.2032 was seen trading 10.40% while 15.12.2032 changed hands at 10.45%. Further ahead on the yield curve, 15.09.2034 traded at 10.80% and finally, 15.06.2035 traded at 10.85%. On the external front, the LKR depreciated marginally against the USD, closing at LKR 302.41/USD compared to LKR 302.37/USD recorded the previous day. Overnight liquidity in the banking system contracted to LKR 135.4Bn from LKR 140.8Bn recorded the previous day.

UNIT TRUSTS

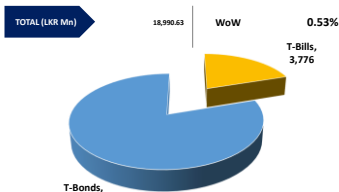
22-Sep-25

First Capital Unit Trust Funds			Sell Price	Buy Price	Avg. Yield
			LKR	LKR	
First Capital Money Market Fund	FCMMF		3,487.53	3,487.53	8.13%
First Capital Gilt Edge Fund	FCGEF		2,609.02	2,609.02	7.12%
First Capital Wealth Fund	FCWF		2,179.89	2,179.84	8.34%
First Capital Equity Fund	FCEF		4,221.99	4,158.66	30.76%
First Capital Money Plus Fund	FCMPF		1,122.00	1,122.00	7.03%

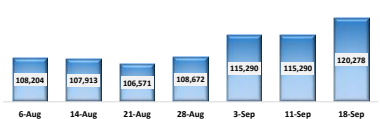
EXCESS LIQUIDITY AND CBSL HOLDINGS



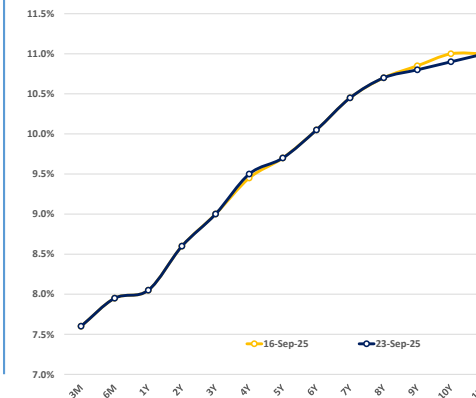
OUTSTANDING STOCK [GSEC]



FOREIGN HOLDING (LKR MN)

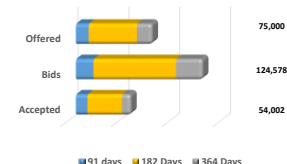


BILLS AND BONDS YIELDS



Tenure		Bid	Offer	Today	Last Week	Change (bps)
< 91 Days	< 3M	7.65%	7.55%	7.60%	7.60%	0
< 182 Days	< 6M	8.00%	7.90%	7.95%	7.95%	0
< 364 Days	< 1Y	8.10%	8.00%	8.05%	8.05%	0
01-May-27	< 2Y	8.65%	8.55%	8.60%	8.60%	0
01-Jul-28	< 3Y	9.05%	8.95%	9.00%	9.00%	0
15-Sep-29	< 4Y	9.45%	9.55%	9.50%	9.45%	+5
01-Jul-30	< 5Y	9.75%	9.65%	9.70%	9.70%	0
15-Mar-31	< 6Y	10.10%	10.00%	10.05%	10.05%	0
15-Dec-32	< 7Y	10.50%	10.40%	10.45%	10.45%	0
01-Nov-33	< 8Y	10.75%	10.65%	10.70%	10.70%	0
15-Sep-34	< 9Y	10.85%	10.75%	10.80%	10.85%	-5
15-Jun-35	< 10Y	10.95%	10.85%	10.90%	11.00%	-10
15-Jan-37	< 12Y	11.05%	10.95%	11.00%	11.00%	0
15-Aug-39	< 15Y	N/A	N/A	N/A	N/A	N/A
01-Jan-41	< 20Y	N/A	N/A	N/A	N/A	N/A

T-BILL AUCTION (LKR MN)



Auction Date	17-Sep-25
Settlement Date	19-Sep-25

91 days	7.57%	-1 bps
184 days	7.89%	0 bps
364 days	8.02%	0 bps

T-BOND AUCTION (LKR MN)



MATURITY TABLE (LKR MN)

