



First Capital  
A Jansinhabadi Group Company

## DAILY FIXED INCOME & UNIT TRUST

August 26, 2025

**"Subdued trading activity contributes to static yield environment"**

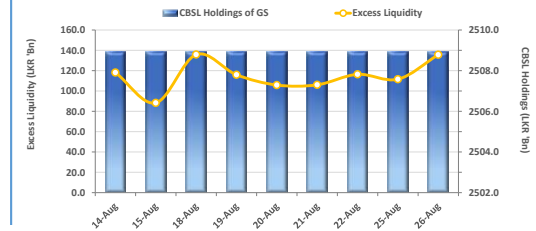
The secondary market continued to exhibit subdued momentum, with limited investor participation keeping yields broadly unchanged. Trading was largely confined to the short end, where the 15.05.2026 maturity saw transactions in the 8.05% to 8.10% range. Moving ahead, the 01.07.2028 maturity was quoted at 8.97%. Finally, both 15.10.2029 and 15.12.2029 traded narrowly between 9.43% and 9.45%. In the forex market, the LKR depreciated against the greenback, closing at LKR 302.2/USD compared to LKR 302.0/USD seen previously. Meanwhile, overnight liquidity in the banking system expanded to LKR 135.7Bn from the previously seen level of LKR 111.6Bn.

### UNIT TRUSTS

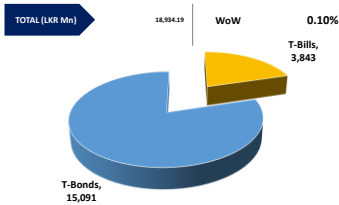
25-Aug-25

First Capital Unit Trust Funds			Sell Price	Buy Price	Avg. Yield
			LKR	LKR	
First Capital Money Market Fund	FCMMF		3,465.90	3,465.90	8.10%
First Capital Gilt Edge Fund	FCGEF		2,594.93	2,594.93	7.08%
First Capital Wealth Fund	FCWF		2,173.55	2,173.50	8.85%
First Capital Equity Fund	FCEF		4,104.05	4,042.49	27.11%
First Capital Money Plus Fund	FCMPF		1,115.92	1,115.92	7.07%

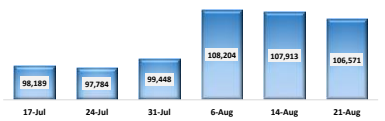
### EXCESS LIQUIDITY AND CBSL HOLDINGS



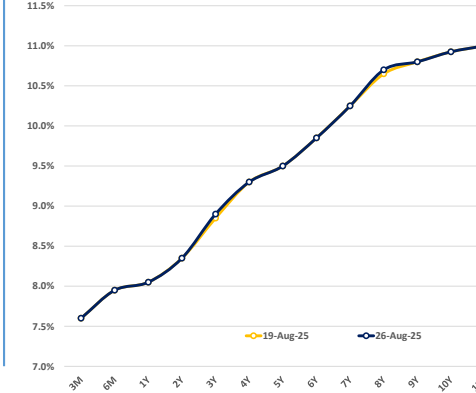
### OUTSTANDING STOCK [GSEC]



### FOREIGN HOLDING (LKR MN)

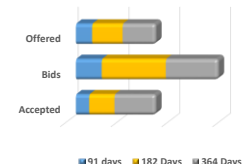


### BILLS AND BONDS YIELDS



Tenure		Bid	Offer	Today	Last Week	Change (bps)
< 91 Days	< 3M	7.65%	7.55%	7.60%	7.60%	0
< 182 Days	< 6M	8.00%	7.90%	7.95%	7.95%	0
< 364 Days	< 1Y	8.10%	8.00%	8.05%	8.05%	0
01-May-27	< 2Y	8.40%	8.30%	8.35%	8.35%	0
01-Jul-28	< 3Y	8.95%	8.85%	8.90%	8.85%	+5
15-Jun-29	< 4Y	9.35%	9.25%	9.30%	9.30%	0
15-May-30	< 5Y	9.55%	9.45%	9.50%	9.50%	0
15-Mar-31	< 6Y	9.90%	9.80%	9.85%	9.85%	0
15-Dec-32	< 7Y	10.30%	10.20%	10.25%	10.25%	0
01-Nov-33	< 8Y	10.75%	10.65%	10.70%	10.65%	+5
15-Sep-34	< 9Y	10.85%	10.75%	10.80%	10.80%	0
15-Mar-35	< 10Y	11.00%	10.85%	10.93%	10.93%	0
15-Jan-37	< 12Y	11.10%	10.90%	11.00%	11.00%	0
15-Aug-39	< 15Y	N/A	N/A	N/A	N/A	N/A
01-Jan-41	< 20Y	N/A	N/A	N/A	N/A	N/A

### T-BILL AUCTION (LKR MN)



### Auction Date: 20-Aug-25

Settlement Date: 22-Aug-25

91 days	7.59%	▼	-1 bps
184 days	7.89%	▼	-1 bps
364 days	8.03%	◀	0 bps

### T-BOND AUCTION (LKR MN)

### Auction Date: 12-Aug-25



### MATURITY TABLE (LKR MN)

Week ending: 29-Aug-25

