

DAILY FIXED INCOME & UNIT TRUST



October 1, 2025

"Yield curve nudges up as secondary market activity gains traction"

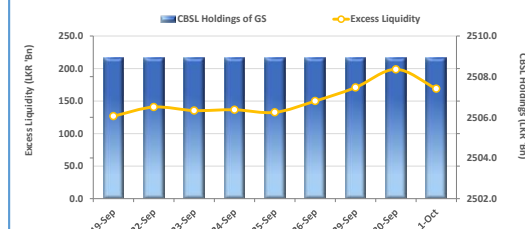
The secondary market demonstrated mixed sentiment today, while trading activity remained moderate in terms of volume. The secondary market yield curve saw mixed activity along the short to mid end, with notable trades occurring among the 2028, 2029, 2030, 2031 and 2032 maturities. In the 2028 segment, bonds maturing on 15.01.2028, 15.02.2028, 15.03.2028 and 01.05.2028 traded within the 9.00% to 9.10% range. The 15.10.2028 and 15.12.2028 bonds were seen trading within the narrow range of 9.18% to 9.20%. Moving on to 2029 maturities, the 15.09.2029, 15.10.2029 and 15.12.2029 bonds traded between 9.60%-9.65%. Furthermore, the 15.05.2030 maturity traded between 9.74% to 9.78%, whilst the 15.03.2031 maturity changed hands at 10.10%. Lastly, within the 2032 segment, maturities dated 01.10.2032 and 15.12.2032 traded between 10.50% to 10.55%. The CBSL conducted its weekly T-Bill auction today, raising the full amount offered of LKR 43.08n, despite receiving bids totaling LKR 80.88n. For the 3-month maturity, LKR 5.08n was accepted, with the weighted average yield declining by 4bps to 7.53%. The 6-month bill saw the highest uptake at LKR 35.98n, while the 12-month maturity recorded LKR 2.18n. Weighted average yields for the 6-month and 12-month bills remained unchanged at 7.89% and 8.02%, respectively. On the external front, the LKR depreciated slightly against the USD, closing at LKR 302.62/USD, compared to LKR 302.61/USD recorded the previous day. Overnight liquidity in the banking system contracted to LKR 169.08n from LKR 198.88n recorded the previous day.

UNIT TRUSTS

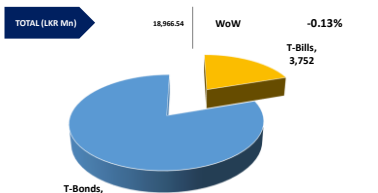
30-Sep-25

First Capital Unit Trust Funds			Sell Price	Buy Price	Avg. Yield
			LKR	LKR	
First Capital Money Market Fund	FCMMF		3,493.73	3,493.73	8.12%
First Capital Gilt Edge Fund	FCGEF		2,613.03	2,613.03	7.01%
First Capital Wealth Fund	FCWF		2,182.10	2,182.05	8.24%
First Capital Equity Fund	FCEF		4,304.44	4,239.87	33.31%
First Capital Money Plus Fund	FCMPF		1,123.74	1,123.74	7.06%

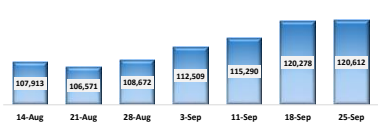
EXCESS LIQUIDITY AND CBSL HOLDINGS



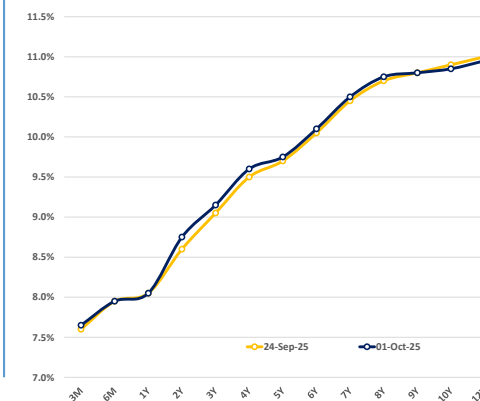
OUTSTANDING STOCK [GSEC]



FOREIGN HOLDING (LKR MN) WoW

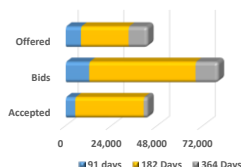


BILLS AND BONDS YIELDS



Tenure		Bid	Offer	Today	Last Week	Change (bps)
< 91 Days	< 3M	7.70%	7.60%	7.65%	7.60%	+5
< 182 Days	< 6M	8.00%	7.90%	7.95%	7.95%	0
< 364 Days	< 1Y	8.10%	8.00%	8.05%	8.05%	0
01-May-27	< 2Y	8.80%	8.70%	8.75%	8.60%	+15
01-Jul-28	< 3Y	9.20%	9.10%	9.15%	9.05%	+10
15-Sep-29	< 4Y	9.65%	9.55%	9.60%	9.50%	+10
01-Jul-30	< 5Y	9.80%	9.70%	9.75%	9.70%	+5
15-Mar-31	< 6Y	10.15%	10.05%	10.10%	10.05%	+5
10-Jan-32	< 7Y	10.55%	10.45%	10.50%	10.45%	+5
01-Nov-33	< 8Y	10.80%	10.70%	10.75%	10.70%	+5
15-Sep-34	< 9Y	10.85%	10.75%	10.80%	10.80%	0
15-Jun-35	< 10Y	10.90%	10.80%	10.85%	10.90%	-5
15-Jan-37	< 12Y	11.00%	10.90%	10.95%	11.00%	-5
15-Aug-39	< 15Y	N/A	N/A	N/A	N/A	N/A
01-Jan-41	< 20Y	N/A	N/A	N/A	N/A	N/A

T-BILL AUCTION (LKR MN)



Auction Date		1-Oct-25	
Settlement Date		3-Oct-25	
days	7.53%	▼	-4 bps
days	7.89%	◀▶	0 bps
days	8.02%	◀▶	0 bps

T-BOND AUCTION (LKR MN)



MATURITY TABLE (LKR MN)

Week ending	3-Oct-25
Bond interest	10,303
T-Bill	29,232