



First Capital  
A Jansahlabs Group Company

# DAILY FIXED INCOME & UNIT TRUST

October 7, 2025

**"Mixed sentiment marks start of week  
in secondary market"**

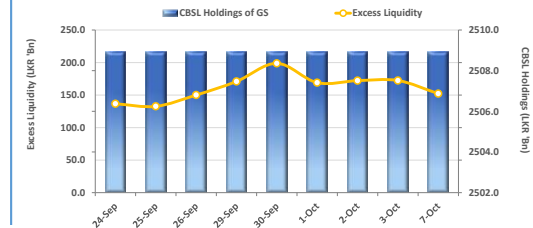
The secondary market opened the week on a mixed note, marked by selling pressure in the 2029 maturities alongside buying interest in longer-term tenors. However, overall trading volumes remained subdued throughout the day. Among the trades executed during the day, the 15.10.2028 maturity, transacted at a yield of 9.25%. Within the 2029 segment, the 15.06.2029 bond traded at 9.70%, while the 15.10.2029 and 15.12.2029 maturities were executed at yields of 9.72%. In contrast, activity in the longer-dated segment reflected buying interest, with the 15.09.2034 and 15.06.2035 maturities trading at 10.82% and 10.90%, respectively. On the external front, the LKR appreciated against the USD, closing at LKR 302.48/USD vs. LKR 302.52 seen previously. Overnight liquidity in the banking system slightly contracted to LKR 152.2Bn from LKR 172.4Bn recorded the previous day.

## UNIT TRUSTS

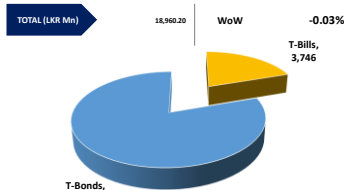
06-Oct-25

First Capital Unit Trust Funds			Sell Price	Buy Price	Avg. Yield
			LKR	LKR	
First Capital Money Market Fund	FCMMF		3,498.29	3,498.29	8.00%
First Capital Gilt Edge Fund	FCGEF		2,616.06	2,616.06	7.05%
First Capital Wealth Fund	FCWF		2,180.44	2,180.39	7.95%
First Capital Equity Fund	FCEF		4,360.74	4,295.33	35.06%
First Capital Money Plus Fund	FCMPF		1,125.05	1,125.05	7.05%

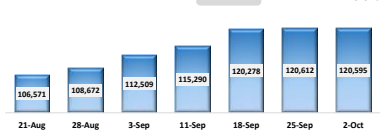
## EXCESS LIQUIDITY AND CBSL HOLDINGS



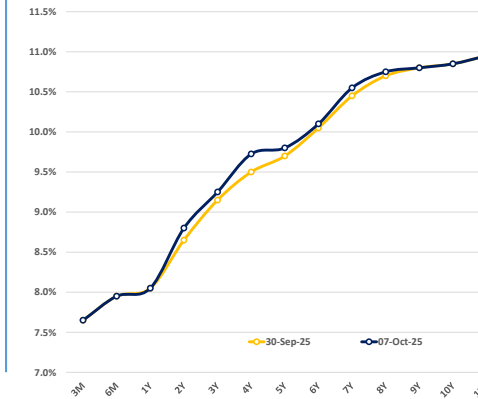
## OUTSTANDING STOCK [GSEC]



## FOREIGN HOLDING (LKR MN)

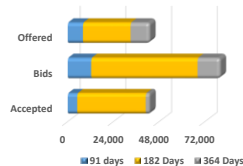


## BILLS AND BONDS YIELDS



Tenure		Bid	Offer	Today	Last Week	Change (bps)	
01-Jan-41	< 91 Days	< 3M	7.70%	7.60%	7.65%	7.65%	0
	< 182 Days	< 6M	8.00%	7.90%	7.95%	7.95%	0
	< 364 Days	< 1Y	8.10%	8.00%	8.05%	8.05%	0
	01-May-27	< 2Y	8.85%	8.75%	8.80%	8.65%	+15
	15-Oct-28	< 3Y	9.30%	9.20%	9.25%	9.15%	+10
	15-Oct-29	< 4Y	9.75%	9.70%	9.73%	9.50%	+23
	01-Jul-30	< 5Y	9.85%	9.75%	9.80%	9.70%	+10
	15-Mar-31	< 6Y	10.15%	10.05%	10.10%	10.05%	+5
	10-Jan-32	< 7Y	10.60%	10.50%	10.55%	10.45%	+10
	01-Nov-33	< 8Y	10.80%	10.70%	10.75%	10.70%	+5
	15-Sep-34	< 9Y	10.85%	10.75%	10.80%	10.80%	0
	15-Jun-35	< 10Y	10.90%	10.80%	10.85%	10.85%	0
	15-Jan-37	< 12Y	11.00%	10.90%	10.95%	10.95%	0
15-Aug-39	< 15Y	N/A	N/A	N/A	N/A	N/A	
01-Jan-41	< 20Y	N/A	N/A	N/A	N/A	N/A	

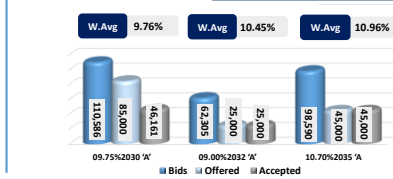
## T-BILL AUCTION (LKR MN)



Auction Date	1-Oct-25
Settlement Date	3-Oct-25

91 days	7.53%	▼	-4 bps
184 days	7.89%	◀	0 bps
364 days	8.02%	◀	0 bps

## T-BOND AUCTION (LKR MN)



## MATURITY TABLE (LKR MN)

Week ending	10-Oct-25
T-Bill	25,363