



DAILY FIXED INCOME & UNIT TRUST

December 15, 2025

"Secondary market opens on a soft note"

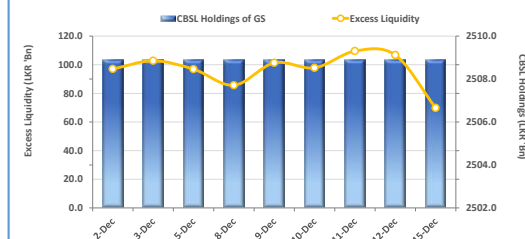
The secondary market opened the week on a dull footing. Trading volumes were low while the yield curve held firm. 2028 maturities showcased noteworthy activity with 15.02.2028 and 15.03.2028 changing hands between 8.98% to 9.00% while 01.05.2028 and 01.07.2028 traded at 9.05% and 9.06% respectively. Finally, 01.09.2028 and 15.12.2028 were seen trading at 9.10%. Moving ahead, 15.10.2029 traded at 9.48% and 01.10.2032 changed hands at 10.25%. These maturities registered minimal rate movements relative to the previous trading session. On the external front, the LKR depreciated against the USD, closing at LKR 309.15/USD compared to LKR 309.03/USD seen previously. Overnight liquidity in the banking system contracted to LKR 69.8Mn from LKR 106.8Mn recorded on the previous day.

UNIT TRUSTS

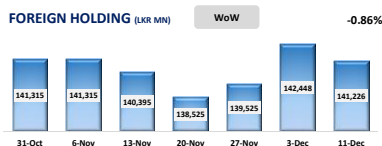
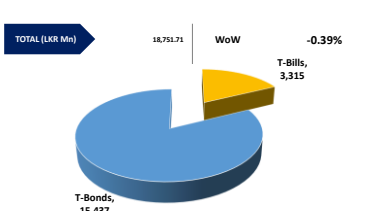
First Capital Unit Trust Funds		Sell Price	Buy Price	Avg. Yield
		LKR	LKR	
First Capital Money Market Fund	FCMMF	3,551.38	3,551.38	7.88%
First Capital Gilt Edge Fund	FCGEF	2,651.18	2,651.18	7.09%
First Capital Wealth Fund	FCWF	2,223.44	2,223.38	8.57%
First Capital Equity Fund	FCEF	4,440.37	4,373.76	37.52%
First Capital Money Plus Fund	FCMPF	1,140.37	1,140.37	7.14%
First Capital Fixed Income Fund	FCFIF	4,275.09	4,274.98	8.34%

14-Dec-25

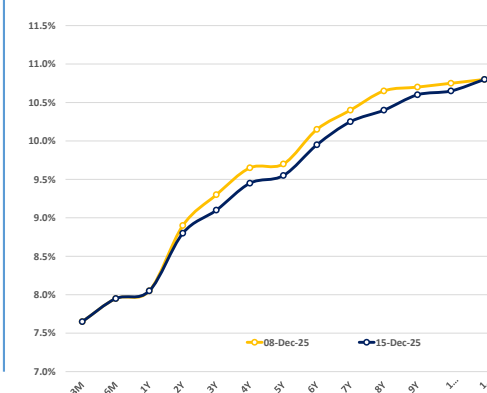
EXCESS LIQUIDITY AND CBSL HOLDINGS



OUTSTANDING STOCK [GSEC]

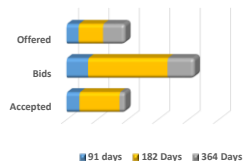


BILLS AND BONDS YIELDS



Tenure			Bid	Offer	Today	Last Week	Change (bps)
	< 91 Days	< 3M	7.70%	7.60%	7.65%	7.65%	0
	< 182 Days	< 6M	8.00%	7.90%	7.95%	7.95%	0
	< 364 Days	< 1Y	8.10%	8.00%	8.05%	8.05%	0
	15-Sep-27	< 2Y	8.85%	8.75%	8.80%	8.90%	-10
	15-Dec-28	< 3Y	9.15%	9.05%	9.10%	9.30%	-20
	15-Dec-29	< 4Y	9.50%	9.40%	9.45%	9.65%	-20
	01-Jul-30	< 5Y	9.60%	9.50%	9.55%	9.70%	-15
	01-Dec-31	< 6Y	10.00%	9.90%	9.95%	10.15%	-20
	15-Dec-32	< 7Y	10.30%	10.20%	10.25%	10.40%	-15
	01-Nov-33	< 8Y	10.45%	10.35%	10.40%	10.65%	-25
	15-Sep-34	< 9Y	10.65%	10.55%	10.60%	10.70%	-10
	15-Jun-35	< 10Y	10.70%	10.60%	10.65%	10.75%	-10
	15-Jan-37	< 12Y	10.85%	10.75%	10.80%	10.80%	0
	15-Aug-39	< 15Y	N/A	N/A	N/A	N/A	N/A
	01-Jan-41	< 20Y	N/A	N/A	N/A	N/A	N/A

T-BILL AUCTION (LKR MN)



Auction Date		10-Dec-25	
Settlement Date		12-Dec-25	
91 days	7.51%	◀▶	0 bps
184 days	7.91%	◀▶	0 bps
364 days	8.03%	◀▶	0 bps

T-BOND AUCTION (LKR MN)



MATURITY TABLE (LKR MN)

